



# FY 2026 Notice for Minato City Open-Nursery Attendance Program for All Children



## About the program

This program offers a new experience to children currently being raised at home and who do not attend kindergarten or nursery facilities. The goal is to promote growth and development of all children in Minato City through regularly scheduled daycare.

### Daycare use frequency

**Children attend two scheduled days of daycare a week** (with a limit of 24 hours a month).

\*Some facilities offer participation 1 day a week.

### Days available

**Monday through Friday (fixed days each week)**

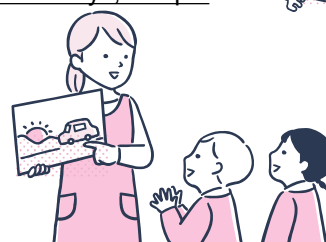
\*Excluding national holidays and the New Year holidays (Dec.29th–Jan.3rd)

\*The days offered may vary according to the facility

\*The days of the week cannot be changed during period of use.

● Example: apply for two days a week, Mondays and Fridays, in April

Mon	Tue	Wed	Thu	Fri	Sat	Sun
		1	2	3	4	5
6	7	8	9	10	11	12
13	14	15	16	17	18	19
20	21	22	23	24	25	26
27	28	29	30			



### Daycare Time

**Choose between 9 AM ~ 5 PM** (fixed time each day)

\*The scheduled time can be changed after consultation with individual facility

\*Kindergarten facilities already have specific use times

### Period of use

**<First term>**

**From April 1 (Wed.) to September 30 (Wed.), 2026**

**<Second term>**

**October 1, 2026 (Thu.) to March 31 (Wed.), 2027**

\*Check the Minato City website for information on application deadlines, scheduling and so on.

### Facilities offering the program

**Some public and private nursery school and kindergarten facilities, etc.**

\*See the Minato City website for details.

See the Minato City website to find out which facilities offer the program.

### Fees

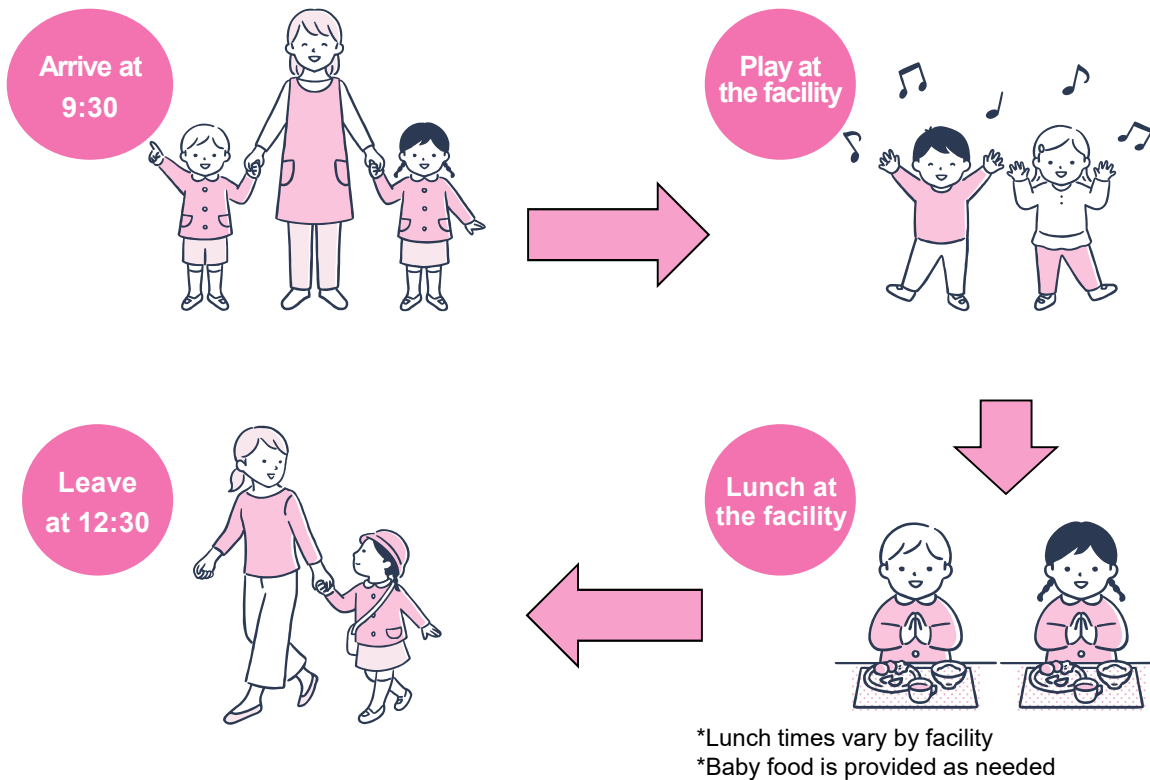
**The program is free of charge**



**Children meeting all of the following conditions are eligible to participate**

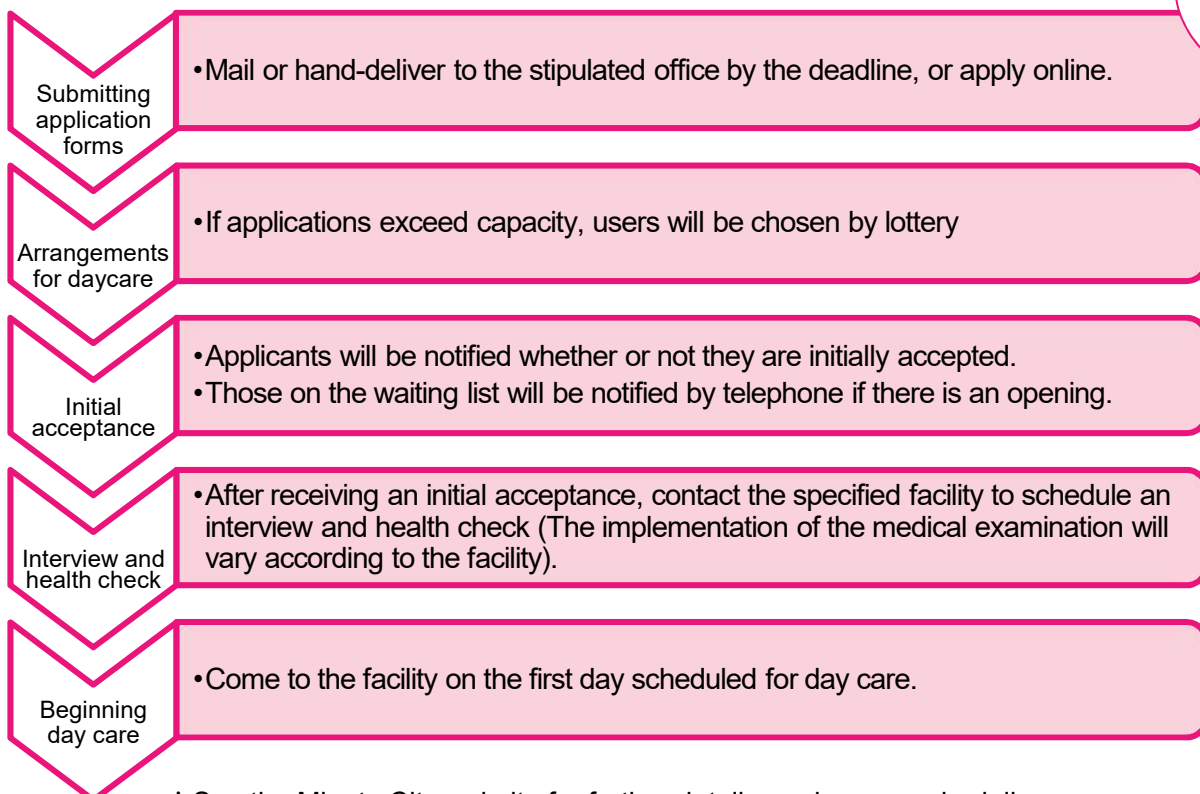
1. Age 6 months to 2 years (continuing through March of the year in which a child turns 3)
  2. Able to participate from the first month of term applied for
  3. Not currently attending a kindergarten, licensed nursery or kodomo-en, or corporate run daycare facility
- \*Priority is given to children who are registered residents of Minato City and currently reside there

## Example of typical 3-hour use



## Application process

Please submit applications online if possible



\* See the Minato City website for further details on daycare scheduling

### Queries

For information on Licensed Nursery Schools (public and private), contact the Nursery School Section in the Child and Family Support Department

For information on Public Kindergartens, contact the School Affair Section, Educational Affairs Subsection

For information on Private Kindergartens, contact the Office of the Superintendent of Education, Educational General Affairs Subsection

☎ 03-3578-2429

☎ 03-3578-2779

☎ 03-3578-2712



Minato City official website  
About the Minato City Open-Nursery Attendance Program for All Children

