

K Shibaura & Daiba course

A course exploring tourist attractions in the Bay Area

Time required **3.2 hours** Travel time **43 minutes** Total travel distance **2.2 km**

K-1 Urban Launch

Duration
20 minutes

Urban cruises connecting Shibaura and Odaiba

A 41-person cruise ship that departs at regular times every day. Includes an approximately 3.5 km, 15 minutes route connecting Shibaura Island and Odaiba. Passengers may also board with pets. Departs twice per day (may vary by season). Enjoy a refined boat trip through canals and under bridges.

Closed: The Wednesday after the second Tuesday of each month. Fare (one-way): JPY800 (adult, middle-school age and older), JPY400 (children, elementary school age). Younger children board free of charge (with an adult). *Additional JPY400 fee for pets.



K-2 Odaiba Marine Park

Duration
30 minutes

Enjoy night views and sunsets that dip into the skyscrapers

You can enjoy marine sports and leisure at the park facing Tokyo Bay. It is the best tourist spot in Tokyo with the developed promenades, Statue of Liberty and maritime bus station. Your mind will be healed by the beautiful sunset and night scenery of skyscrapers looking out from the artificial sand beach, Odaiba Beach, that stretches for about 800m.



K-3 DECKS Tokyo Beach

Duration
30 minutes

Odaiba's leading entertainment spot

There are many shops of fashion, miscellaneous goods and restaurants on both seaside mall on the sea side and island mall on the Yurikamome side. There are also entertainment facilities including Madame Tussauds Tokyo and Legoland Discovery Centre Tokyo.



☎03-3599-6500 ☎11:00-21:00 / 11:00-23:00 Restaurants (5F) / 11:00-24:00 Restaurants (6F) (*differ depending on shops)

K-4 AQUA CITY ODAIBA

Duration
30 minutes

Looking at Rainbow Bridge and Tokyo Bay

Complex facility based on the theme of a large entertainment shopping mall, "Tokyo Resort Island." There are shopping zones with about 80 stores, focusing primarily on casual fashion, as well as gourmet zones where you can enjoy a variety of food. It is becoming increasingly popular.

☎03-3599-4700 ☎1:00-21:00 (Restaurants are open until 23:00; some restaurants are open until 04:00 the next day).

*Please see the AQUA CITY ODAIBA website for details.



Route introduction

Start JR Tamachi Sta. Shibaura Exit (East Exit)

about 820m ☎about 14 minutes

K-1 Urban Launch (Water buses)

about 15 minutes

K-2 Odaiba Marine Park

about 200m ☎about 4 minutes

K-3 DECKS Tokyo Beach

about 260m ☎about 4 minutes

K-4 AQUA CITY ODAIBA

about 140m ☎about 2 minutes

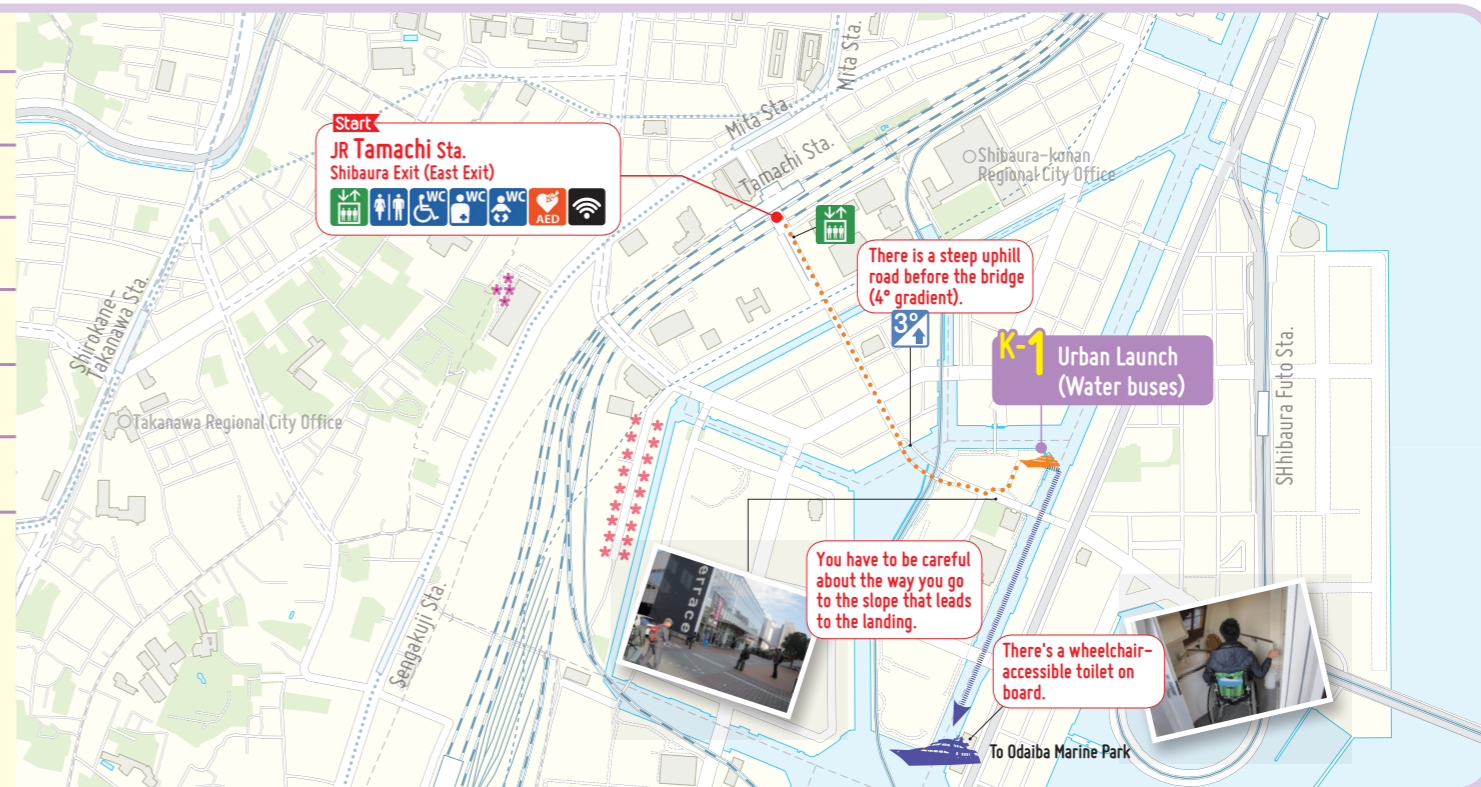
K-5 Fuji Television

about 200m ☎about 4 minutes

Goal Yurikamome Line Daiba Sta.

Course Feature

Overall route is flat, and the slope is only at the bridge.
Urban Launch (Cruise ship) has different departure times due to seasons, so you need to check beforehand.



Barrier-free street walking MAP in Minato City



Topic

Mysterious Museum
Tokyo Trick Art Museum is a strange trick art museum where you enjoy playing with paintings that are stereoscopically visible and the illusion of eyes.



K-5 Fuji Television

Duration
40 minutes

The Hachitama Spherical Observation Room, an Odaiba landmark

The Hachitama Spherical Observation Room, located approximately 100 m off the ground, offers a 270-degree coastal panorama view that encompasses Tokyo Tower and Rainbow Bridge. On clear days visitors can see as far as Mt. Fuji and the Chichibu and Tanzawasan mountain ranges.

☎03-5531-1111 ☎10:00-18:00 (last entry 17:30) Closed: Mondays (or following day, in the event that Monday is a national holiday).

Admission: JPY700 (adults, high school age or older), JPY450 (elementary and middle school students). Younger children enter free. Disabled visitors and 1 accompanying attendant, up to two persons, enter free on presentation of disability certificate.



Break



At the Marine House adjacent to Odaiba-Marine park, you can rest from the terrace while looking at Rainbow Bridge.