

MINATO CITY

MINATO CITY MASTER PLAN
FY 2021-2026

MINATO CITY ACTION PLAN
FY 2021-2023

Overview version



Aiming for Minato City to be a
place where all are welcome and
all can take pride in their local communities



Overcoming difficulties and creating a future envisioned with the people of the city

Due to the effects of COVID-19, we are facing a crisis of unprecedented magnitude. In addition to working for the swift recovery of citizens' livelihoods and industries in Minato City, it is of utmost importance that we protect the lives and health of the people of the city from invisible threats without allowing unfair prejudice and discrimination. The future of Minato City lies in overcoming this crisis. It is precisely because the future is more uncertain than ever before that this Plan will be used to show the way to a brighter future, promote the creation of a community where people can live safely and securely, and realize the future envisioned together with the people of Minato City to be a "place where all are welcome and all can take pride in their local communities."

January 2021

Mayor of
Minato City

*The photographs in the Plan include photographs taken before the spread of COVID-19.

To overcome the crisis, we will protect the life and health of each of our citizens as the government closest to them

It is the mission of Minato City to protect the lives, health, and property of its citizens.

In response to the crisis brought about by COVID-19, Minato City, as the administrative organization closest to the people of the city, has been implementing measures based on regional characteristics in addition to the policies of the national government and the Tokyo Metropolitan Government.

The COVID-19 infections situation and its impact on the lives of the citizens of Minato City change daily. We will accurately grasp the changes in the situation, and quickly and proactively implement measures that only Minato City can take that pay close attention to every corner of the citizens' lives.



Blue illumination of bridges and more to show support and appreciation for those working in healthcare and other such settings (Nagisa-bashi Bridge)

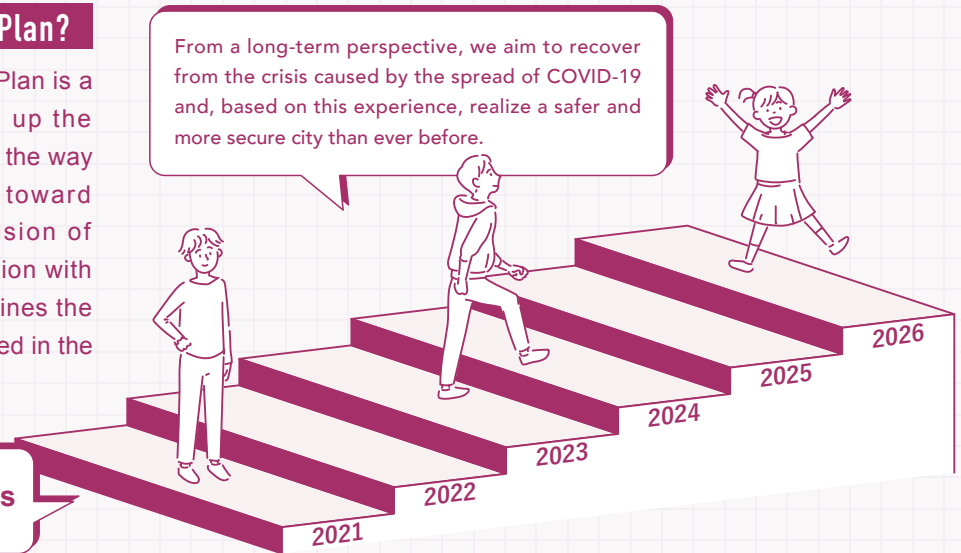
Minato City's efforts regarding COVID-19 infections



What is the Master Plan?

The Minato City Master Plan is a new roadmap opening up the Reiwa period that shows the way for the next six years toward realizing the future vision of Minato City. In conjunction with this, the Action Plan defines the projects to be implemented in the first three years.

From a long-term perspective, we aim to recover from the crisis caused by the spread of COVID-19 and, based on this experience, realize a safer and more secure city than ever before.



Period of the Master Plan **6 years**
FY 2021-2026

Ideal state of

Minato City

The ideal state we are aiming for is the final fiscal year of the Plan envisioned together with the citizens of Minato City. We will work together to realize the future of Minato City.

Minato City, a place where all are welcome and all can take pride in their local communities



A city where each citizen is valued, diversity is accepted, and an active community is fostered with a sense of pride in Minato City

A lively city where everyone can live comfortably, tackle their dreams, and shine with vitality

A sustainable city with a low environmental impact that is resilient against all kinds of crises and where everyone can live safely and securely

A cutting-edge city where advanced technology is utilized in services for citizens to make their lives convenient and comfortable

Final fiscal year of the Plan

Minato City

in 2026

Population estimate



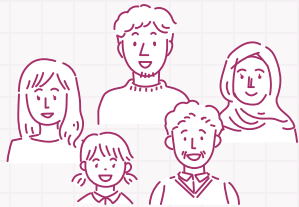
October 1, 2020

259,893 people



October 1, 2026

284,647 people



Financial scale



Plan period
Total expenditure
for FY 2021-2026

926.1 billion yen



Future image of Minato City in 2026

► Seven priority matters

1

Shifting to city government operations better adapted to a new age

Bringing advanced technology to city administration. Creating a city hall where procedures can be completed without coming in person.

2

Becoming a resilient city: protecting the lives of residents from all threats

Becoming a city that will not succumb to various threats and crises such as earthquakes, typhoons, and infectious diseases.

3

Building a sustainable city: making possible both city development and environmental burden reductions

Becoming a fulfilling city that contributes to achieving the SDGs for the city's prosperity, greenery, and water.

4

Achieving a harmonious community: becoming a place where diverse people can live together and support one another

Becoming a society in which people can live in their own way, regardless of their age, disability status, nationality, or gender.

5

Responding with precision to increasing administration demands accompanying population growth.

Administrative services and community building that support the lives of the 280,000 citizens.

6

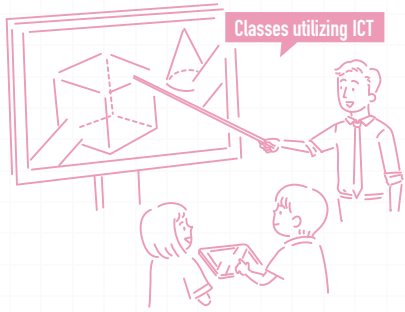
Promoting participation and partnership: resolving problems by bringing community strengths together

Concentrating the strengths of the city citizens, the private sector, and regions throughout Japan. Having everyone work on resolving issues that are difficult with just government efforts.

7

Tokyo 2020 Games success and passing on the Games legacy

Passing on a legacy to the next generation in many fields such as sports, culture, the environment, and more.



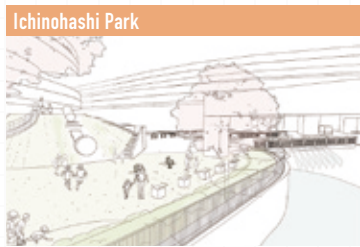
Minato City Akasaka Junior High School
Scheduled to begin operation in September 2022
*Will begin operation as an integrated elementary and junior high school in April 2023



Minato City Akabane Elementary School and Akabane Kindergarten
Scheduled start of operation: April 2023 for the elementary school
September 2026 for the kindergarten
*The completed image is of Akabane Elementary School



Complex facilities such as Shiba Go-chome (Fudanotsuji Square)
Scheduled to open in April 2022



Ichinohashi Park
Scheduled to be completed in FY2022



(Provisional name) Culture and Art Hall
Scheduled to open in FY2027



**Buildings that conserve energy
Bicycle sharing**



(Provisional name) Complex facilities such as Shinno Iki-Iki Plaza
Scheduled to open in FY2023



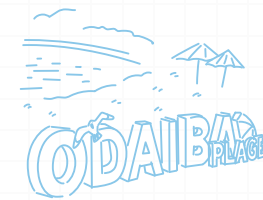
Complex facilities such as City Heights Kurumacho
Scheduled to be completed in FY2024



Canalside Takahama
Scheduled to be completed in FY2023



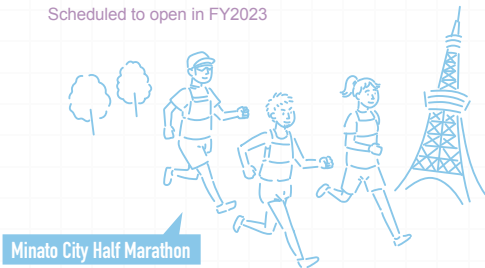
Minato City Shibahama Elementary School
Scheduled to open in April 2022



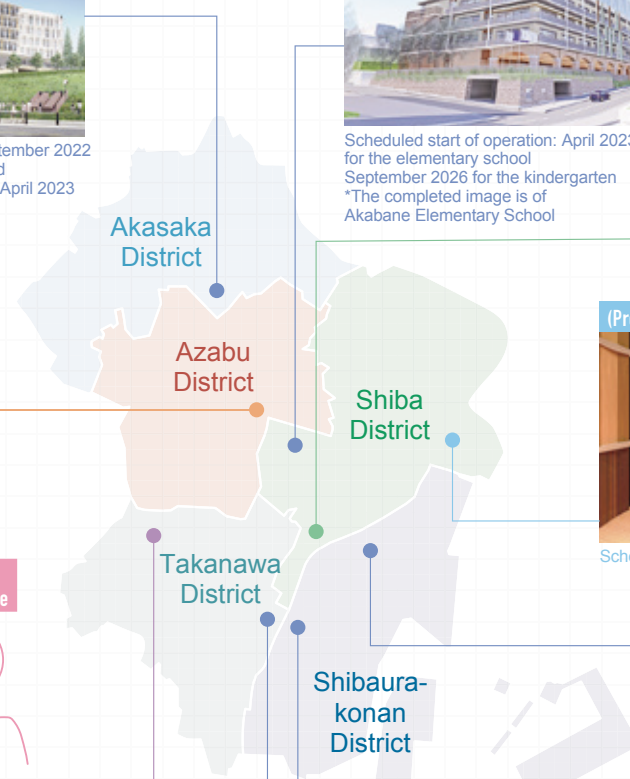
**"Odaiba Plage"
Ocean swimming in the city**



**"Nationwide Collaboration Marché"
held in Minato City
with specialties from throughout Japan**



Minato City Half Marathon



*The illustrations are images of efforts. The completed images and establishment periods may change.

Plans by field

We will set the direction of the city administration in each field and develop administrative services effectively.

I A City that Shines Urban Development / Environment



Together, we will create a comfortable, convenient, disaster-resilient, safe, and secure city that is sustainable and environmentally friendly.



Promoting urban development through plans and cooperation

We support and guide "participatory urban development" based on the initiative and consensus of the community itself.



Promoting environmental education and environmental conservation activities

To encourage proactive action, we provide opportunities to learn about the relationship between the environment and daily life.

II A City with Energy Community / Industry



Creating a multicultural society that leverages its diverse community and rich cosmopolitan nature. We will launch branded industries and culture from Minato City.



Support for people and organizations running community activities

We will train human resources who can become community leaders, leading to initiatives to solve local issues.



Support for appealing shopping streets

We support improving the scenery of appealing shopping streets and the creation of bustling shopping areas that everyone can use with peace of mind.

The SDGs are the international goals for 2030 adopted at the United Nations Summit. They consist of 17 goals to realize a sustainable world. In the Master Plan, we clarify the relationship with the SDGs and promote city administration based on the 17 goals.

III A City that Nurtures People Welfare / Health / Education



We support the education and growth of children. We will create an environment where everyone can live in their own way and participate in sports and a variety of learning while supporting each other in the community.



Support for children with special needs

In cooperation with schools, public health centers, children and families support centers, and others, we provide appropriate support according to the characteristics of the child's disability.



Promotion of a reliable community health and medical care system

By improving the medical system and strengthening cooperation with related organizations, we will work during normal times to be able to protect people's safe, secure, and healthy lives during disasters.

IV Aiming for achievement



We will enable the citizens of Minato City to live highly convenient lives by utilizing advanced technology and administrative resources that are unique to Minato City. We will promote highly transparent and open city administration while respecting peace, human rights, and diverse values.



Communicating information on the city administration to support diverse lifestyles

In order to respond to diversifying lifestyles and work styles, we will actively utilize social networking services and other means to communicate city government information.



Promoting policies that utilize the power of the private sector

We will create initiatives that maximize the strengths of the private sector through collaboration to solve city issues and enhance corporate value.

District plans

Minato City has five unique districts:

Shiba, Azabu, Akasaka, Takanawa, and Shibaura-konan.

We will utilize the strong relationship of trust we have built with the citizens and local communities through participation and collaboration, as well as local resources and the vitality of the private sector, and work together to realize our policies.

Solving local problems locally

The district plans are compiled with a focus on the projects that each district will tackle on their own. They are created based on the recommendations from the citizen participation organizations. Each regional city office will share this plan with the citizens of the district and promote city planning through collaboration.

Akasaka District Plan

Akasaka-Aoyama:
where everyone is engaged with and shares in their community

The Akasaka Regional City Office aims to create a community where people connected to Akasaka of all backgrounds and ages can have an interest in the community and coexist as community members.

Shiba District Plan

Shiba: where people connect with the community to create a joyful future

The Shiba Regional City Office aims to create opportunities and places for people of all backgrounds and ages to interact with each other, and for all people involved in the community to work together to build a joyful future for the Shiba district.

Azabu District Plan

Azabu: where anyone can play the leading role in a district of participation and partnership – “Azabu”, which creates the new normal for the future –

The Azabu Regional City Office aims to create a community where all people can play a role in planning and cooperation through “A” (people who love Azabu), “ZA” (various relationships), and “BU” (the stage).

Takanawa District Plan

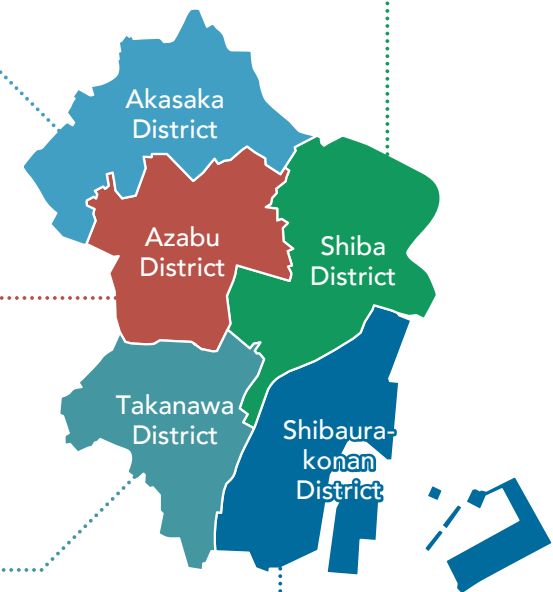
Takanawa: where the circle of community creates safety and reassurance – Together with an evolving district –

The Takanawa Regional City Office aims to realize a safe and secure community for everyone, based on the ties of the local community, even as the community evolves due to the opening of Takanawa Gateway Station and the redevelopment of the district.

Shibaura-konan District Plan

Minato City Bay Area:
overflowing with creative force and abundance, where everyone can be their best

The Shibaura-konan Regional City Office aims to leverage the district's signature waterfront environment, improve the environment so people can live comfortably, and achieve a district where a sustainable community can be built.



Minato City Master Plan / Minato City Action Plan

Overview version

Published in March 2021
Published by Minato City
Edited by the Planning Section of Minato City
1-5-25 Shibakoen, Minato City, Tokyo 105-8511
Tel: 03-3578-2111 (main number) Fax: 03-3578-2034
<https://www.city.minato.tokyo.jp>

Publication number 2020290-5811



Please see
the Minato City Master Plan
on the Minato City website.