

# MINATO MONTHLY

Published by Minato City

*Published monthly by: Minato City Tokyo Edited by: Public Relations Subsection, Office of the Mayor, Minato City Hall, 1-5-25, Shibakoen, Minato-ku, Tokyo 105-8511  
Tel: 03-3578-2111, weekdays, 9 a.m. to 5 p.m. E-mail: kuminkoho@city.minato.tokyo.jp Web: www.city.minato.tokyo.jp Circulation: 10,000 copies*

No 406 December 2020



Shibakoen and Tokyo Tower

## Waste & Recycling Collection

Please note that Minato City will not collect waste and recyclables between December 31 and January 3. Basically, waste and recyclables are collected until December 30. From the new year, waste and recyclables will be collected from January 4. When discarding waste, please leave it in the designated areas by 8 a.m. or by 7:30 a.m. at special regions. Don't discard any garbage for the period between December 31 and January 3. For more information, please visit Minato City Web. The Minato Recycling and Waste Management Office will be closed from 4:25 p.m. on December 30 until 7:40 a.m. on January 4. Please note that after the holidays, collection may be delayed due to an increase of waste and traffic conditions.

### Large-Sized Waste Center schedule

The Large-Sized Waste Center will be closed during the holidays. Reservations made via telephone will be suspended from 7 p.m. on December 28 until

8 a.m. on January 4. Online reservations will not be accepted from midnight on December 29 until 11:59 p.m. on January 3.

### Discarding large-sized waste

1. Call or make a reservation online at the Large-Sized Waste Center at 03-5296-7000 or <http://sodai.tokyokankyo.or.jp>. If you apply online, you will need to confirm your reservation within 24 hours of issuing a temporary reservation.
2. Purchase a large-sized waste ticket of the amount specified during your reservation.
3. Write your name or the 4-digit number and the date of collection on the ticket on the item you will be discarding. Place the waste at the designated area by 8 a.m. on the day of the collection. Please note that large-sized garbage collection is conducted in reservation order, so contact the center in advance if you wish to discard something within this year.

### Electrical Household Appliance Recycling Center schedule

To discard air conditioners, TVs, refrigerators, freezers and washing/drying machines, contact the stores where you purchased them directly or the Home Appliance Recycling Center at 03-5296-7200 (Japanese auto-operator only).

The Home Appliance Recycling Center will be closed from 5 p.m. on December 28 until 8 a.m. on January 4. Online services will be unavailable from midnight on December 29 until 11:59 p.m. on January 3.

The largest amount of waste throughout the year is produced during the New Year's holiday season. We kindly ask for your cooperation in waste discarding in order to start a new year in a clean environment.

**Inquiries:** Minato Call, Tel: 03-5472-3710

**Minato Monthly** is delivered with The Japan Times/International New York Times on the first of each month. It is also available at municipal facilities, post offices and subway stations (Akabanebashi, Akasaka, Akasaka-mitsuke, Aoyama-itchome, Azabu-juban, Daimon, Gaien-mae, Hiroo, Kamiyacho, Mita, Nogizaka, Omotesando, Roppongi, Shimbashi, Shiodome, Shirokanedai and Shirokane-Takanawa) in Minato City. The articles appearing in the **Minato Monthly** are also found on the Minato City Web: [www.city.minato.tokyo.jp](http://www.city.minato.tokyo.jp)

**Minato Monthly home-delivery service:** For free delivery of Minato Monthly to foreign resident's homes in Minato City, contact Minato Call or Minato Monthly by e-mail at [kuminkoho@city.minato.tokyo.jp](mailto:kuminkoho@city.minato.tokyo.jp). Please write "Minato Monthly" in the subject line.

**Minato Call**  
CITY INFORMATION SERVICE  
03-5472-3710



RESIDENT SERVICES

# Certificate Issuance during the Holidays

If you need any certificates during the New Year’s holidays, you can receive them by the following methods.

Convenience stores

**Available time:** 6:30 a.m. to 11 p.m.; until December 28 and start from January 4  
Closed; December 29 to January 3  
**Stores:** 7-Eleven, Lawson, Family Mart, Community Store and Ministop with a multiple copying machine  
To receive the certificate, you will need your My Number card or Basic Resident Registration card and PIN number. For more details, please inquire at the Counter Services Subsections of Regional City Offices.  
**Certificates that can be issued:** Certificate of Residence, Certificate of Seal Registration, Certificate of Family Register, last three years of Taxation Certificate and Tax Payment Certificate, Supplementary Certificate of Family Register  
\*Some services are not available.

Telephone reservation service

Available time

	December			January	
	26 to 27	28	29 to 31	1 to 3	4
Reservation	Closed	8:30 a.m. to 4 p.m.	Closed	Closed	8:30 a.m. to 4 p.m.
Pick-up	9 a.m. to 5 p.m.	5:15 to 8 p.m.			5:15 to 8 p.m.

**Certificates that can be issued:** Certificate of Residence and Certificate of Seal Registration  
Appointments and receipt of the certificate must be made in person and cannot be made by proxies.

How to make an appointment and receive certificates

Please make an appointment by phone in person by 4 p.m. on weekdays at Regional City Offices. Please note that the place where you call differ according to the pick-up venues for certificates. To pick up the document, you need to show the same ID as you mentioned in your appointment. An issuance fee of 300 yen per copy will also be required. Please bring exact change.

Appointment reservation counters & pick-up venue

Reservation		Pick-up Venue
Shiba Regional City Office	03-3578-3144	Minato City Hall 1F, Night duty room
Azabu Regional City Office	03-3583-4151	Azabu Civic Center
Akasaka Regional City Office	03-5413-7011	Akasaka Civic Center
Takanawa Regional City Office	03-5421-7611	Takanawa Civic Center
Shibaura-konan Regional City Office	03-3456-4151	Gender Equality Center “Libra”
Daiba Annex of Shibaura-konan Regional City Office	03-5500-2351	Daiba Civic Center

**Inquiries:** Minato Call, Tel: 03-5472-3710

CHILD SUPPORT

# Year-end Child Allowance Applications

A Child Allowance Application must be submitted within 15 days of the day after a child’s birth or moving into Minato City. If the City Hall is closed on the 15th day because of the New Year’s holidays, submit your application until January 4. For this fiscal year, infants who were born or children who moved to Minato City between December 14 to 19 are eligible. Please note that you may not receive the delayed parts of the allowance if your application is late.  
If the application is sent by post, the date of arrival will be listed as the official application date. *Nintei seikyu-u-sho*, application forms are available at Regional City Offices or can be obtained from Minato City Web.  
**Inquiries:** Children’s Benefit Subsection, Tel: 03-3578-2431

EQUALITY & FREEDOM

# Human Rights Week

December 4 through December 10 is Human Rights Week. The Universal Declaration of Human Rights was adopted by the United Nations General Assembly on December 10, in order to ensure human rights as a common standard that should be achieved for all people. Since then, December 10 has become the Human Rights Day.  
In Japan, December 4 to 10 has established as “Human Rights Week” in order to raise public awareness for the respect of human rights through various events on the topic.

Human rights counseling for foreign nationals

Foreign people can consult at Human Rights Counseling Room, Tokyo Legal Affairs Bureau.  
**Hours:** Weekdays, 9 a.m. to 5 p.m.  
**Languages:** English, Chinese, Korean, Filipino, Portuguese, Vietnamese, Nepali, Spanish, Indonesian, Thai  
Tel: 0570-090911  
English and Chinese websites are available.

Tokyo Metropolitan Government (TMG) Foreign Residents’ Advisory Center

TMG provides consultation service for foreign people living in Tokyo.  
**Hours:** 9:30 a.m. - noon, 1 p.m. - 5 p.m.  
**English:** Weekdays, Tel: 03-5320-7744  
**Chinese:** Tuesday and Friday, Tel: 03-5320-7766  
**Korean:** Wednesday, Tel: 03-5320-7700

CHANNEL 11

# Minato Public TV Program Guide

J:COM MINATO-SHINJUKU DECEMBER schedule

Program	Time	Program
Hi from the Mayor of Minato City 20 min. bilingual program	10:30 a.m., 1:30 p.m., 3:30 p.m., 5:30 p.m., 9:30 p.m.	The Minato City Center for Traditional Culture, a Minato City Designated Tangible Cultural Asset, will pass down traditional culture to the next generation. From residents' requests, the city preserved and utilized this building.
Minato-ku Koho Topics, Topics in Minato City 20 min. program	10 a.m., 1 p.m., 3 p.m., 5 p.m., 9 p.m.	<Public Announcements> Delivers important announcements, new information, or events in Minato City. <b>1-10:</b> Mayor’s Press Release <b>11-20:</b> Local History Museum 2nd anniversary event “UI KEA MINATO Autumn 2020” <b>21-31:</b> People with Disabilities Week Anniversary Project

**Note:** Programs may change without notice. You can also see the programs broadcasted by this channel on the Minato City Web or Youtube. The Koho Topics are also broadcasted in the Chii-bus and the Odaiba Rainbow bus. Video/DVD lending is available at the Office of the Mayor, Regional City Offices, and each public library. Videos/DVDs for the past year can be rented.  
**Inquiries:** J:COM Minato-Shinjuku, Tel: 0120-999-000 URL: <https://www.jcom.co.jp/english/>

# MINATO BULLETIN BOARD



Programs may change without notice. All events listed on this page are conducted in Japanese. For more information, please see the Minato City Web.

LANGUAGE SUPPORT

## Kissport

**Azabu Japanese Class for foreign nationals**

**Class:** Sundays, January 24 to March 14, 1:30 to 3:10 p.m.  
**Place:** Lecture room of Azabu Civic Center  
**Eligibility:** 12 foreign nationals aged 16 years old and over who can read hiragana and katakana  
**Tuition:** ¥6,000  
**Application & inquiries:** Fax; 03-3583-5547 or email; azabu@kissport.or.jp, Web; www.kissport.or.jp/sisetu/azabu/ by January 9  
Your name, phone number, email address, how long and where you have studied Japanese are required.



RECYCLE

## Sale of Recycled Bikes

About 30 recycled bikes in good condition that are reclaimed and repaired are sold.  
**Date and time:** December 13, 10 a.m.  
The drawing starts a 10:30 a.m. Minato City residents have priority.  
**Place:** Minato Recycling and Management Office  
Working Contact, 3-9-6 Moto-azabu  
**Inquiries:** Minato Call, Tel: 03-5472-3710



INTERFM 89.7 MHz

## Minato Voice

**Time:** 5:56 to 5:59 p.m., 3 min. program  
**Monday & Thursday:** English, **Tuesday:** Japanese  
**Wednesday:** Chinese, **Friday:** Korean  
\* Programs may change without notice.  
**Inquiries:** Public Relations Subsection, Tel: 03-3578-2041



CHILD SUPPORT

## After-School Child Support

Minato City is calling for new members to join our after-school Pupils' Clubs at Children's Hall and the "Hoka GO → Pupils' Club" from April 1, 2021. Both clubs provide after-school care for children of working and busy parents. For more information, please visit Minato City web. The website is scheduled to be available from December 11.  
**Supervising Subsection:** Youth Education Subsection

HEALTH ADVISORY

## Precautions against Influenza

Infectious diseases caused by pathogens such as influenza and noroviruses are common in the winter. Washing your hands, gargling, and wearing a mask are effective ways of preventing infection. Be sure to wash your hands thoroughly after being out of the house and before meals. It is effective to gargle when you return home and in the morning and at night. Masks retain humidity and can help prevent germs from spreading.  
Dry air is not good for your throat and nose, so pay attention to the indoor humidity level. It is a good idea to let in fresh air once every hour.  
You can also get an influenza vaccine. After you are vaccinated, it will take about four weeks for the vaccine to become effective.  
It is also important to keep yourself resistant to disease by living a healthy lifestyle. Please keep in good health in this winter.

## Minato Public Health Center

SCHEDULE FOR DECEMBER

**Eligibility:** Registered residents or registered foreign residents of Minato City

**Minato Public Health Center:** 1-4-10 Mita, Tel: 03-6400-0083

	Eligibility	Date	Time	Place
Stomach, colon cancer	Residents aged 35 or older Capacity: 20 people	Weekdays in January	8:30 to 9:30 a.m.	(B)

**Appointment for HIV test, Tel: 03-6400-0081**

Eligibility	Examination date	Exam. results available	Place
HIV/STD test*	Open to all	1/7, 1/21	9:30 to 10:30 a.m. (A)

\*The result is two weeks later from the check-up day at the Minato Public Health Center

**Other examinations, Tel: 03-6400-0084**

	Eligibility	Date	Time	Place
Checkup and consultation for babies/infants	An eligible resident must receive the notification - 4-month-old: Born in September, 2020 - 18-month-old: Born in June, 2019 - 3 years old: Born in December, 2017		A notification will be sent to eligible.	(A)
Birthday dental checkup	Babies aged one and two years old born in December	1/13	Reservation required	(A)

(A) Minato Public Health Center  
(B) Genki Plaza Medical Center For Health Care, Jimbocho Mitsui Building, 1-105 Kanda-Jimbocho, Chiyoda City  
**Note:** You need to apply and make an appointment in advance.  
**Inquiries and appointment:** Minato Public Health Center, Tel: 03-6400-0084  
For inquires in English, contact Minato Call, Tel: 03-5472-3710

**Himawari Medical Facilities Consultation Service**

If you are looking for a doctor or pharmacy, you can call the Himawari  
Himawari informs medical institutions and Japanese healthcare system.  
Tel: 03-5285-8181, 9 a.m.-8 p.m.



LIBRARY EVENTS



# Winter Assembly for Kids

Come to municipal libraries to enjoy winter programs.

Date	Time	Place	Program	
Until 16		Azabu	Quiz rally, "Search for Honta-kun and Santa"	Children up to sixth graders
		Akasaka	Fun reading, Lucky Bag	
Until 25		Takanawa	Fun raffle ticket distribution	Children up to 18 years old
		Takanawa Kids-to-Teens Hall	Library advent calendar	
14	10-10:30 a.m./ 11:30-noon	Konan	Concert for parents and children	First 20 children 3 years old and under and their guardians for each slot Call/visit Konan Library for reservation
18	3-4 p.m.	Mita	Special storytelling	First 10 pairs up to sixth graders
19	11-11:45 a.m.	Takanawa	Susie's Fun Ventriloquism	First 15 four years old to sixth graders who can watch the play by oneself Call/visit Takanawa Library for reservation
22	3-4 p.m.	Mita	Special storytelling	First 10 pairs up to sixth graders
25	3-3:30 p.m.	Takanawa	Craft workshop, "Let's make mask case"	First 10 elementary school children Call/visit Takanawa Library for reservation from December 18

**Note:** Programs may change without notice.

OPINION

## Collection of opinions regarding the Minato City Internationalization Master Plan

### How to read the Plan

In addition to the "Public Comments, Opinions on Policies and Plans" page on Minato City Web, the Plan can be read in Japanese and English at the Global Community, Art and Culture Planning Subsection on the third floor of City Hall, the Reference Room on the third floor of City Hall, the general information area on the first floor of City Hall, Regional City Offices, and Minato City libraries except the Takanawa Library Annex.

### How to submit opinions

Please mail, fax, submit your opinions in person, or send them from "Public Comments, Opinions on Policies and Plans" page by Tuesday, January 5, 2021.

### Where to submit opinions

Global Community Planning Subsection, Community Promotion Section  
1-5-25 Shibakoen, Minato City 105-8511  
Fax: 03-3438-8252

**Inquiries:** Global Community Planning Subsection, Tel: 03-3578-2046

COLUMN

## Introducing Traditional Arts and Crafts

### Nambu Ironware

*Nambu tekki* or *Nambu* ironware is a metalwork from Iwate Prefecture. There are kettles, saucepans, wind chimes, accessories, and many more. They are rust-resistant, durable, and last for a long time. Modern *Nambu* ironware comes in a variety of colors, attracting many people around the world.

Winter in Japan tends to be very cold and the air is dry. You may feel warm, if you drink hot water or tea served by the *Nambu* iron kettle.



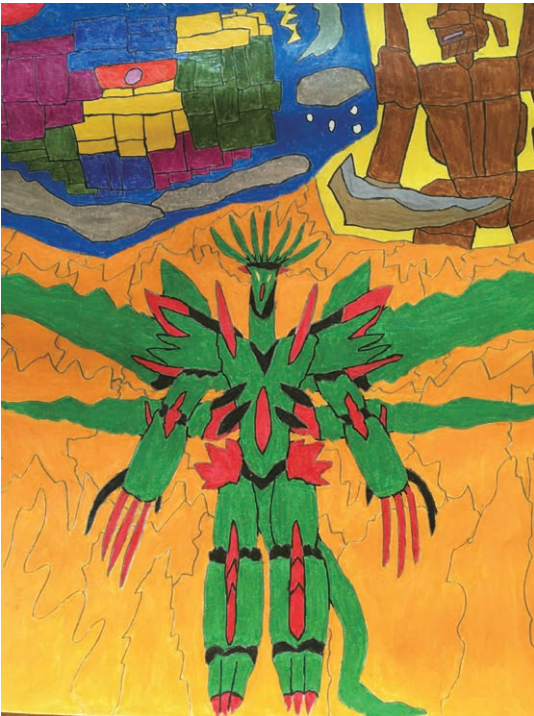
CULTURE

## Art Exhibition of People with Disabilities Children with Disabilities Living in the Society

Art created in the facilities for people with disabilities in Minato City, from the project for children with severe disabilities, and others.

**Date & time:** January 19 to 31, 11 a.m. to 5 p.m. until 7 p.m. on Friday  
**Place:** Itochu Garden B1F, Itochu Aoyama Art Square, 2-3-1 Kita-aoyama  
Free admission

**Inquiries:** Disabled Persons' Welfare Subsection, Tel: 03-3578-2383, Fax: 03-3578-2678



## Population of Minato City

AS OF NOVEMBER 1, 2020

Total: **259,493**

Japanese Residents: 240,771

Male: 112,589 / Female: 128,182

Registered Foreign Residents: 18,722

Male: 9,776 / Female: 8,946

