

Community Development Policy

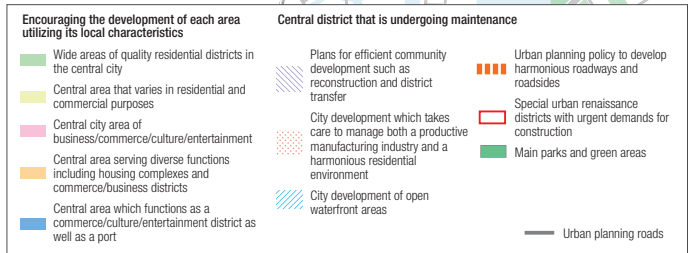
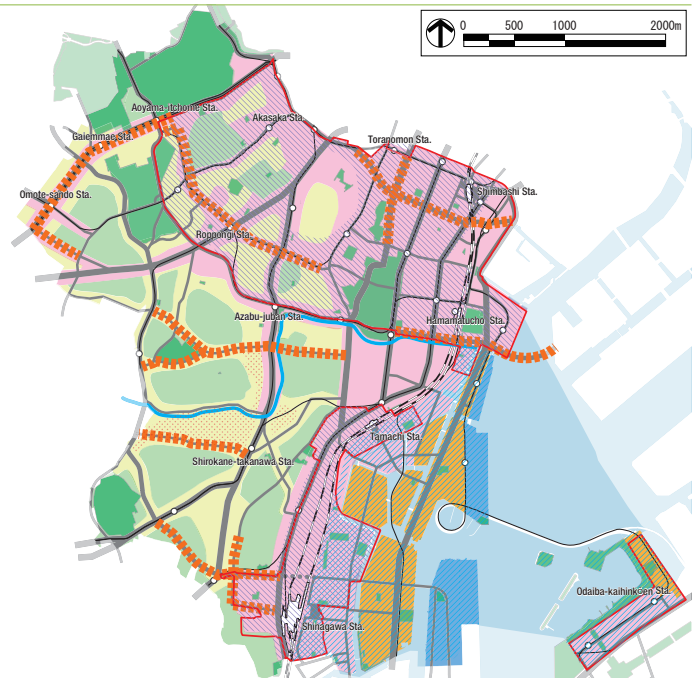
Striving for the goal of a future city: 'A city with Vibrant International Urban Lifestyle', we present the eight main policies of the Community Development Policy in Minato City.

POLICY 1 Effective Land Utilization

Building both comfortable residential environments and global business districts

—The Basic Principles—

- We encourage the utilization of our land by planning wisely and enacting well-designed Community Development.
- By carefully considering the characteristics of each region, we will strategically construct business districts.
- We will utilize on-going urban development projects to solve our community problems.
- By introducing new Area Management systems, we will enhance the charm and value of the city.



POLICY 2 Residential Buildings, Living Environments, Regional Community, and Crime Prevention

Designing a comfortable and healthy living environment

—The Basic Principles—

- We will provide quality living environments to satisfy diversified demands and lifestyles.
- As the population increases, we will build and establish more public, convenient facilities.
- We aim to develop our community and society with multi-cultural symbiosis.
- We will maintain the environment for sustainable well-being, long-term care and preservation.
- We promise to develop safe and secure living environments by preventing crime in shopping districts, parks and school zones.

