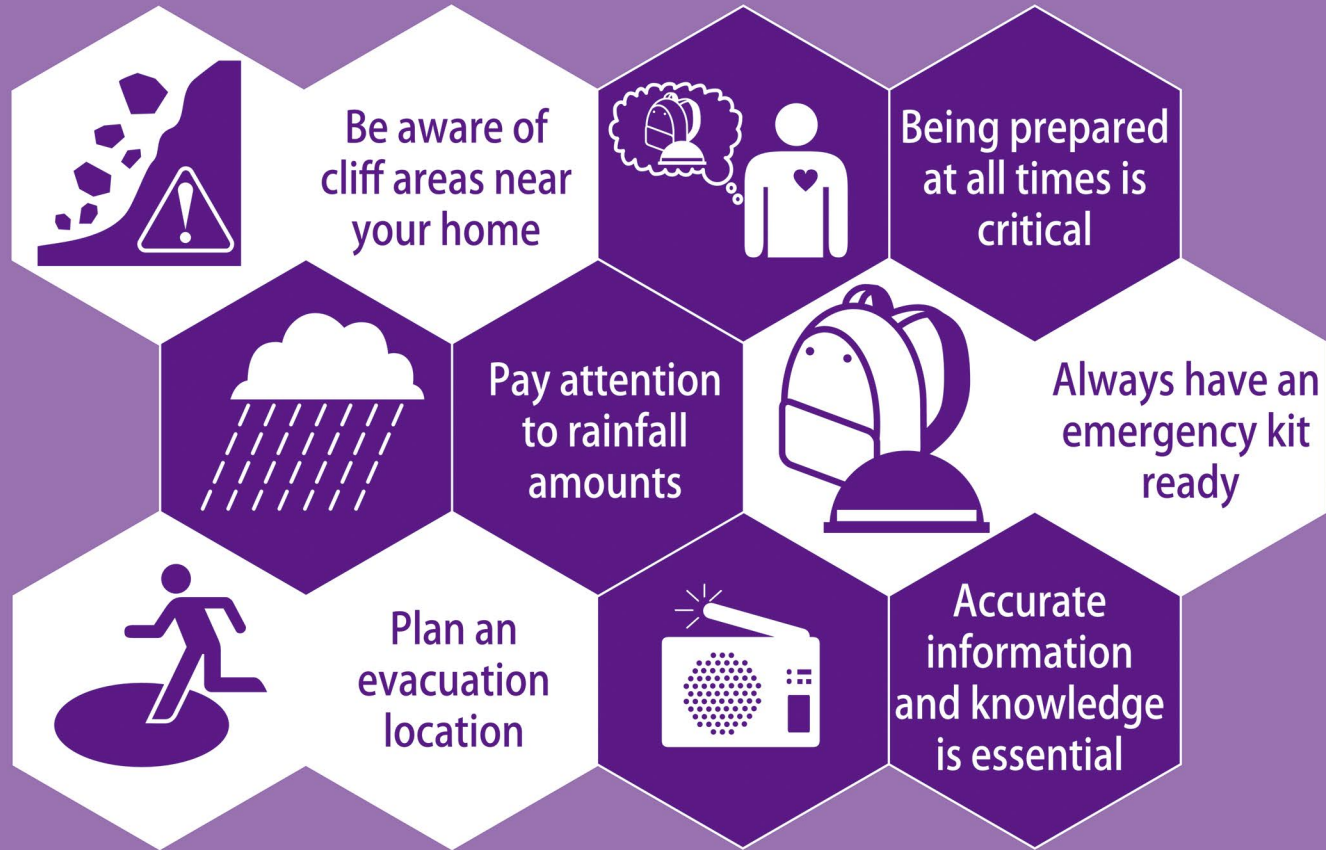


BE PREPARED!



CLIFF & RETAINING WALL REPAIR SUPPORT PROGRAM

Partial aid is available for repairing cliffs and retaining walls.

The City offers aid that partially covers the costs of repairs to cliffs or retaining walls that meet Minato City requirements. Please contact the following phone numbers for more details.

FOR MORE INFO

For aid inquiries: Structural Guidance Subsection, Construction Guidance Section

03-3578-2296, 2297

For inquiries about the Landslide Hazard Map, contact:

Disaster Prevention Subsection, Disaster Prevention Section,
Minato City Disaster Prevention and Crisis Management Department

03-3578-2541

Publication Issuance No. 2022089-621100

Minato City LANDSLIDE HAZARD MAP

September 2019



The Minato City Landslide Hazard Map shows the designated Sediment-related Disaster Warning Areas and Special Warning Areas in Minato City as of September 2019. There are plans to designate new Sediment-related Disaster Warning Areas and Special Warning Areas in the future. When new designations are made, this map will be updated and residents will be notified.