



topic Recruit

Calling all runners for the MINATO City Half Marathon 2025

The MINATO CITY HALF MARATHON 2025 will be held with the aim of realizing community symbiosis through sports in which many city residents, from children to the elderly, regardless of nationality or disability, can participate.

Date

11/16(Sun.) *No postponement for rain
For more information, please check the official website of the tournament via the 2D code.

Runner recruitment brochures are available at each Regional City Office, Lifelong Learning Sports Promotion Section (City Office 7F), sports facilities, public libraries, and each Civic Center.

Program

Category	Half Marathon (21.0975km)	Youth Run (Appx. 3.6km)		Fun Run (Appx. 800m)
Capacity	5,000 runners *Preference given to residents of Minato City *Drawing by lot	200 runners *Preference given to residents and students of Minato City *Drawing by lot		500 runners *Minato City residents only *Drawing by lot
Time Limit	2 hours 30 minutes from the start of the last block	25 min.		30 min.
Start Time	8:40 a.m.	8:30 a.m.		9:10 a.m.
Participation Fee	¥10,000 (¥40,000 for charity)	¥2,000		¥500
Eligibility	Must be 18 years of age or older on the day of the event and able to complete the race within the time limit.*1	Junior High School Students	High School Students	Minato City residents *2 (No age limit)
		Students born between April 2, 2010, and April 1, 2013, who can complete the race within the time limit.	Students born between April 2, 2007, and April 1, 2010, who can complete the race within the time limit.	

*1...If you have difficulty running alone, you may be accompanied by another runner.

*2...Wheelchairs and strollers are allowed. Preschool children must be accompanied by a parent or guardian. Participants who are school age or older and capable of running alone are not allowed to have a companion.

Inquiries

Minato City Marathon Secretariat
TEL 03-5770-1400

Section in Charge

Lifelong Learning Sports Promotion Section, Sports Promotion Planning Subsection



The official
website of the
tournament

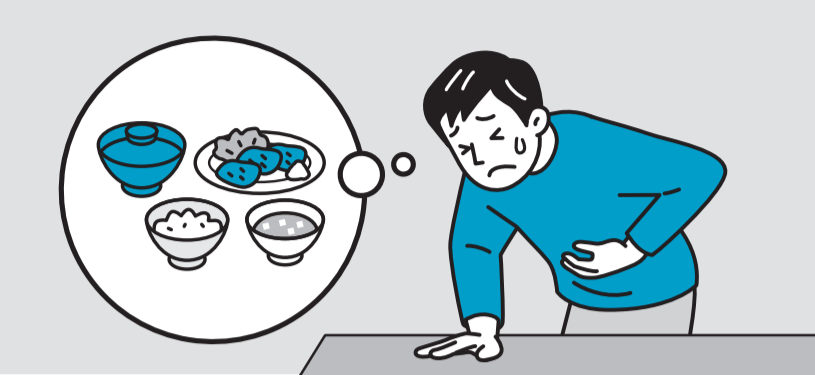
Minato City Half Marathon 2025 Course Map



Half marathon course is certified by the JAAF and World Athletics(WA)

topic Notice

Prevent food poisoning in summer by following the three principles of food poisoning prevention



Three Principles of Food Poisoning Prevention

①Germ-Free

Wash the hands carefully at least twice for 30 seconds before cooking, after using the restroom, before eating, and at other times.

②Do Not Increase Germs

Store food in the refrigerator (below 10°C)

③Kill Germs

Cooked at 75°C for at least 1 minute in the center



Notice 6 points to prevent food poisoning at home

Beware of Meat Food Poisoning

Beef, pork, chicken, and other meats may carry such food poisoning bacteria such as enterohemorrhagic *E. coli* O157 and *Campylobacter*. Fresh does not equal “free of foodborne bacteria.” If the elderly, children, or others with weak resistance to food poisoning become ill, they may become seriously ill. Avoid eating raw or undercooked meat.

Inquiries

Life Hygiene Section, Food Safety Promotion Subsection
TEL 03-6400-0047

topic Subsidy

Minato City Supplementary Benefit for Fixed Amount Tax Reduction (Deficiency Payment)



Supplementary benefit for fixed amount tax reduction will be provided to residents whose income for 2024 was lower than during the previous year and to residents who are not eligible for the supplementary benefit for fixed amount tax reduction. Also, residents who do not benefit from the benefits, even though they are targeted to low-income households.

Eligibility

Taxpayers who reside in the city as of January 1, 2025, and satisfy any of the following conditions:

*Taxpayers with total incomes of ¥1,850,000 or less are eligible.

- Residents who cannot fully deduct the supplementary benefit for fixed amount tax reduction from the individual inhabitant tax or income tax for fiscal year 2024 and for whom the benefits to be provided exceed the amount already provided.
- Persons who are not eligible for the supplementary benefit for fixed amount tax reduction, including their dependents, and who are not also members of households eligible for benefits targeted at low-income households.

Shipping time of application documents, etc.

Application forms and other documents will be mailed to selected applicants in late July and later.

*For those who moved to Minato City from other municipalities on or after January 2, 2024, the city is unable to mail the application forms because of the failure to have the information on the individual inhabitant tax for the fiscal year 2024 and previous benefit payments. If you believe you are eligible, please contact the call center.

Inquiries

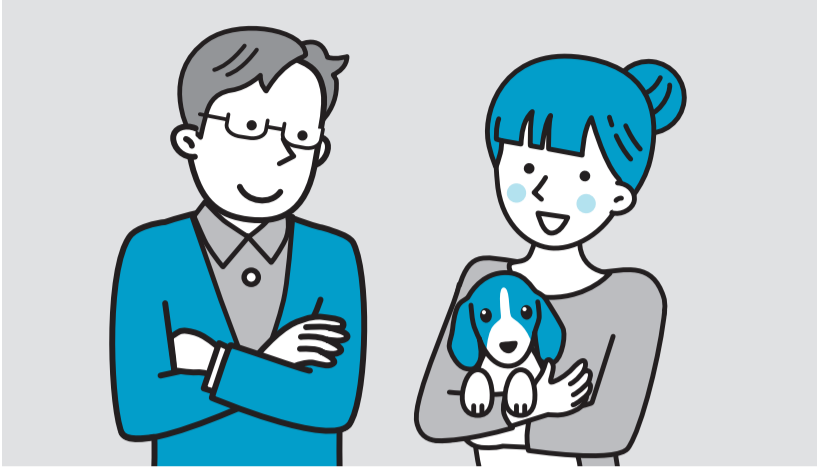
Minato City Fixed-sum Tax Cut Benefits Call Center
(Hours: Mon. through Fri. except holidays at 8:30 a.m. to 5:00 p.m.)
TEL 0120-577-200



Minato City Supplementary Benefit for Fixed Amount Tax Reduction.

topic Notice

For Dog Owners

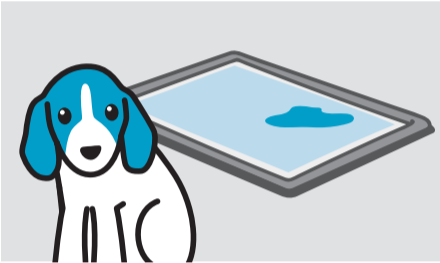


When owning a dog, understand its ecology, habits, and physiology, and raise it with love and responsibility until the end of its life. Also, please be considerate of neighbors and people who are not comfortable with animals.

Rules for owning a dog in Minato City

Toileting should be done before the walk.

Feces/urine while walking outdoors can lead to contamination of other people's private property and public areas. Make it a habit to have your dog defecate at home before going for a walk. If the dog defecates during a walk, be sure to pick it up and bring it home. Also, some people find it uncomfortable to simply pour bottled water on the asphalt when the dog urinates because the urine spreads over the asphalt. After absorbing the urine with a pet sheet, apply water so that the odor does not remain, and then absorb water again with the pet sheet so that it does not spread.



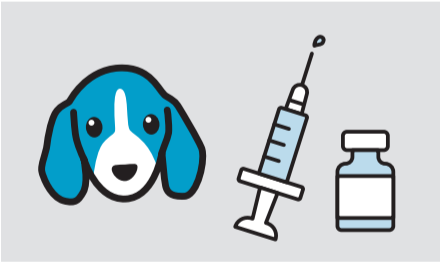
Hold the dog's leash short when walking.

Walking off-leash is a very dangerous practice that can harm other people and dogs and has even resulted in death because of traffic accidents. For the safety of dogs and people, always keep your dog on a leash. Walk with a short lead because a long lead may delay your response in the event of an accident or trip another person or entangle a dog. Leads of variable length should be locked in the shortest state.



Rabies shots should be administered once a year.

In order to prevent rabies, Japan's Rabies Prevention Law requires that rabies shots are administered once a year. After your pet receives an injection, report to the Residents Support Section, Health and Welfare Subsection of each Regional City Offices, or to the Life Hygiene Section, Life Hygiene Counseling Subsection of the Minato Public Health Center, and receive an injection certificate, which you should attach to the dog's collar or other equipment.



Are you prepared for a disaster?

If you live with a pet, you must also consider disaster preparedness for your pet. Make sure that you are prepared for the following in case of an emergency.

- Pet food and water, regular medications (at least a five-day supply of each), pet dishes, collars, leashes, toiletries, and other articles as needed.
- Rabies vaccine and other shots
- Rabies shot certificate, lost dog tags, and microchips
- Can you put your dog in a cage without hesitation?
- Can your dog do toileting in a designated area?
- Is your dog afraid of other people or animals?

In the event of a disaster, return to your home with your pets when it is safe. If your home is in danger of collapsing, please evacuate to a city evacuation center that can accept pets with the evacuation supplies for your pets.

Section in Charge

Life Hygiene Section, Life Hygiene Counseling Subsection

topic Information

Start from July! Newly Started Discount Services Please use Mina Toku PAY, the digital local currency



What is Mina Toku PAY?

Mina Toku PAY is a new local currency operated by the Minato City Shopping Street Promotion Associations to foster ties with the community. This local currency can be used for shopping, eating, and drinking at member stores of the shopping association in Minato City. The associated app includes a *money* function that can be recharged at any time, a *point* function that awards points based on the amount spent, and a *Premium Merchandise Voucher* function.

Please stay tuned for further developments!

*The Smile Merchandise Voucher App has been moved to the Mina Toku PAY App.

Spend, Save, and Participate

This is what is great about Mina Toku PAY!

Points are accumulated every time you use Mina Toku PAY money for purchases, and you can earn even more points by participating in local events and other activities. The points can be used at a rate of 1 point = ¥1, making it very economical.

Special campaign at this time only!

●500 points for downloading the app

The first 50,000 people to download the Mina Toku PAY App will receive 500 points (worth ¥500)!

*The campaign will end without notice when it reaches 50,000 participants.

*Those who have already downloaded the app by July 1 are also eligible.

*User information must be registered

●Redeem points by making purchases

Pay at participating stores and receive points! During July only, the reduction rate will be increased at some stores. Please take advantage of this opportunity and start using Mina Toku PAY!

More Reduction Rates Campaign

Period: Until 7/31 (Thu.)

Reduction Rate: Up to 20%

*Reduction rates may vary by store.

*There is a limit to the number of points that can be redeemed.

Normal Point Returns

Period: 2025/8/1 (Fri.) to 2026/1/31 (Sat.)

Reduction Rate: 2% at all member stores

*There is a limit to the number of points that can be redeemed.

*Medical facilities, taxis, etc. are not covered.

*Please visit the App or official Mina Toku PAY website for more information.

Mina Toku PAY App



App Store



Google Play



Mina Toku PAY website

Inquiries

Mina Toku Pay Call Center (Hours: 9:00 a.m. to 6:00 p.m. except the year-end and New Year holidays)

TEL 0120-19-3710

Section in Charge

Industry Promotion Section, Industry Promotion Subsection

topic Recruit

Please join the Japanese Class, a Japanese language study support project fostered by the community



Learn Japanese while talking with your classmates.

<Three-Month Course>

Eligibility

- Over 18 years old with plans to live in Japan for at least one year from now.
- Those who live, work, or go to school in Minato City.
- Those who can take online classes using a PC or tablet where internet access is available.
- Must be able to attend classes twice a week.

Date

Wednesdays and Saturdays of

9/6(Sat.) to 11/29(Sat.)

7:00 p.m. to 9:00 p.m. Wed.

1:00 p.m. to 4:00 p.m. Sat.

Venue

Wed. class : Online

Sat. class : Shiba Community House

Fees

¥1,000

Application

Please apply from the website from

7/22(Tue.) until 8/1(Fri.)

Inquiries

Global Community Planning Subsection

TEL 03-3578-2565



Japanese Classes

Multilingual Interpreter Call Service

A person who needs translating service, the operator who will interpret and Minato city staff can talk in group of three. Our system allows people to choose their preferred language in advance on their smartphone, and have an entire conversation on the phone with the staff in the various departments of City Hall, through an interpreter. This service is available in 13 languages.



Multilingual
Interpreter
Call
Service

topic Recruit

Please join the “Akasaka/Aoyama Meet Up Project”

This project is where people of various nationalities living, working, or studying in the Akasaka/Aoyama area participate in community activities and interact with Japanese participants. In 2025, the theme will be “Summer Festivals and Bon Dances.” Through group work and field experience, participants will share issues and seek solutions, and the course will lead to community participation.

Eligibility

- Non-Japanese who live, work, or go to schools in the Akasaka/Aoyama areas
- Those who are interested in community activities
- Able to have daily conversations in Japanese

Date/Venue/Contents *Subject to change depending on operating conditions.

No.	Date	Venue	Contents
1	8/2(Sat.)	Akasaka Civic Center	●Learn about summer festivals, Bon dances ●Practice Bon dances
2	8/16(Sat.)	Akasaka Civic Center	●Practice Bon dances ●Yukata dressing experience
3	8/30(Sat.)	Akasaka Sacas, etc.	●Participate in summer festivals/Bon dances in the Akasaka area
4	9/27(Sat.)	Akasaka Civic Center	●Exchanges with each other and discuss foreign residents' participation in the community.

*Attendance at all sessions is required.
*The sessions will be held in easy Japanese
*Multilingual Pocket Talk will be available at the venue just in case.



Capacity

20 (drawing by lot)

Application

Until 7/18(Fri.) Please visit the Minato City website for more information

Inquiries

Akasaka Regional City Office, Collaboration Project Section, Community Policy Subsection
TEL 03-5413-7013



Akasaka/Aoyama Meet Up Project

topic Event

-Swimming in the heart of Tokyo- Odaiba Plage will be held for five days



A swimming event will be held at the beach of Odaiba Kaihin Park. An event where visitors can enjoy the atmosphere of Paris Plage, a vacation atmosphere along the Seine River, will be recreated in Odaiba. Children's attractions will also be set up so that both children and adults can enjoy themselves. Please enjoy the new charm of the beaches at Odaiba.

Eligibility

Anyone

Date

7/18(Fri.) to 7/22(Tue.) 3:00 p.m. to 8:00 p.m.

*Swimming until 7 p.m.
*Swimming may be suspended or cancelled because of the weather conditions.

Venue

Odaiba Kaihin Park (1-4 Daiba)

Application

Please come directly to the venue. (Fourth graders and younger must be accompanied by a parent or guardian.)

Inquiries

Shibaura-kanan Regional City Office, Collaboration Project Section, Bay Area Development Subsection
TEL 03-6435-0481
Shibaura-kanan Regional City Office, Collaboration Project Section, Daiba Collaboration Project Subsection
TEL 03-5500-2365

*Regarding availability on the day of the event:

Minato Call (Hours 12:00 p.m. to 8:00 p.m.)
TEL 03-5472-3710

topic Information

Minato City Local History Museum Feature Exhibition Commemorating the 40th Anniversary of the Minato City Peace City Declaration: 80 Years After the War: Reflecting on Conflict and Memory

The year 2025 marks eighty years since the end of the Asia-Pacific War. Many people are part of a generation that has never known war; we can only learn about life in those days and the sorrow of losing loved ones in the war from stories told by others and remaining documents. This exhibition introduces the museum's collection of the wartime lifestyle, postwar reconstruction, and other aspects of life in Japan.

Date & Time

7/5(Sat.) to 9/30(Tue.) 9:00 a.m. to 5:00 p.m.(until 8:00 p.m. on Sat.)

*Closed on 7/17(Thu.), 8/21(Thu.), and 9/18(Thu.)

Venue

2F Special Exhibition Room in the Minato City Local History Museum

Fees

Adults ¥200/Elementary, junior high, and high school students ¥100

(Set tickets with the permanent exhibition are

Adults ¥400/ Elementary, junior high, and high school students ¥100)

*Free admission:Students (6-18 years), Seniors (65 years and above), and visitors with disabilities (+1 caregiver) who reside in Minato City. Presentation of ID is required.
*8/11(Mon.) is a free admission day for Minato citizens. Please bring ID to confirm.

Inquiries

Minato City Local History Museum TEL 03-6450-2107



Aerial photograph of the area around Shimbashi Station taken by the U.S. military just after the end of the war Collection: National Archives and Records Administration

Please be careful of heat stroke

Frequent hydration is important to prevent heat stroke. Use a fan or air conditioner to regulate the temperature indoors, and take breaks in the shade or in a cool place when going out on a hot day.

