



topic Information

The Water Play Spots in the City

Minato City has many spots to play in the water, such as *jabu-jabu ponds* and a *fountain* in the city parks, as well as indoor heated swimming pools that are comfortable for all ages. All water facilities are sanitized with chlorine to ensure safe play. Please enjoy the summer season at these spots with family or to relax alone!



Parks where you can play in the water

Nine city parks have water facilities. The *jabu-jabu pond* is where visitors can splash in the water, and the *fountain* that periodically sprays water up from the ground. Please visit the Minato City website for a list of city parks with water facilities.



City Parks with
Water Facility

	Name of Park	Address	Dates	Hours	Cleaning
①	Honshiba Park	4-15-1 Shiba	Until 9/21(Sun.)	9:00 a.m. to 5:00 p.m.	Every Tuesday Morning
②	Ichinohashi Park	3-9-1 Higashi-azabu	Until 9/30(Tue.)	8:00 a.m. to 7:00 p.m.	Every Thursday Morning
③	Aoyama Park	2-21-12 Minami-aoyama			Every Monday Morning
④	Shirokanedai Donguri Children's Park	5-19-1 Shirokanedai	Until 9/28(Sun.)		Every Thursday Morning
⑤	Konan Ryokusui Park	4-7-47 Konan	Until 9/10(Wed.)	9:00 a.m. to 5:00 p.m.	Every Thursday Afternoon
⑥	Takanawa Park	3-18-18 Takanawa	Until 9/28(Sun.)		Every Tuesday until 2:00 p.m.
⑦	Shibaura Chuo Park	1-2-28 Konan			
⑧	Futo Park	3-14-34 Kaigan	Until 9/10(Wed.)		Every Thursday Morning
⑨	Konan 3-Chome Playground	3-2 Konan			



Konan Ryokusui Park

Inquiries

Regarding park's water facilities:

Community Development Section, Public Works Subsection of each Regional City Office
Shiba area TEL 03-3578-2032
Azabu area TEL 03-5114-8803
Akasaka area TEL 03-5413-7015
Takanawa area TEL 03-5421-7615
Shibaura-konan area TEL 03-6400-0032

Regarding indoor school pools:

Lifelong Learning Sports Promotion Section, Sports Promotion Subsection
TEL 03-3578-2751

Regarding Shiba Park Multi Purpose Sports Field (Aqua Field Shiba Park):

Shiba Park Multi Purpose Sports Field(Aqua Field Shiba Park)
TEL 03-5733-0575

Indoor school pools open to the public

Heated swimming pools at eight elementary and junior high schools in the city are open to the public. Please visit the Minato City website for more detailed information on how to use the service and access the pools.

Pools open to the public:

- Konan Elementary School
- Hommura Elementary School
- Onarimon Gakuen Onarimon Junior High School
- Takamatsu Junior High School
- Koryo Junior High School
- Akasaka Gakuen Akasaka Junior High School
- Odaiba Gakuen Koyo Junior High School
- Shibahama Elementary School(Summer time only)



Indoor School
Pools



Akasaka Gakuen Akasaka Junior High School

Outdoor pool

- ⑩ Shiba Park Multi Purpose Sports Field (Aqua Field Shiba Park)
2-7-2 Shiba-koen

Open

Until 9/15(Mon.)(Holiday)

Opening Hours

9:00 a.m. to 8:00 p.m.

(closes at 5:00 p.m. in September)

Fees

Adult:¥600

Child:¥100 (Elementary, junior high, and high school student)

Preschool children (over 3 years old), senior citizens (over 65 years old), and citizens with disabilities are free of charge (for up to two hours of use)



Shiba Park Multi
Purpose Sports Field
(Aqua Field Shiba Park)



Shiba Park Multi Purpose Sports Field(Aqua Field Shiba Park)

Feel free to
bring inflatable
pool floats.

topic Survey

Make the *Minato Monthly* More Substantial. Please Fill Out Our Survey!

In order to make the *Minato Monthly* more useful and attractive to everyone, please send us your opinions in the survey.

Inquiries

Public Relations Subsection, Office of the Mayor
03-3578-2036



Minato Monthly Survey

Minato Monthly is delivered with The Japan Times/International New York Times on the first of each month. It is also available at municipal facilities, post offices and subway stations (Akabanebashi, Akasaka, Akasaka-mitsuke, Aoyama-itchome, Azabu-juban, Daimon, Gaien-mae, Hiroo, Kamiyacho, Mita, Nogizaka, Omotesando, Roppongi, Shimbashi, Shiodome, Shirokanedai and Shirokane-Takanawa) in Minato City. The articles appearing in the Minato Monthly are also found on the Minato City Web: www.city.minato.tokyo.jp

Minato Monthly home-delivery service: For free delivery of Minato Monthly to foreign resident's homes in Minato City, contact Minato Call or Minato Monthly by e-mail at kuminkoho@city.minato.tokyo.jp. Please write "Minato Monthly" in the subject line.

Minato Call
CITY INFORMATION SERVICE
03-5472-3710

topic Subsidy

No Childcare Fees for the First Child

Currently, daycare fees for certified nursery and other schools for the first child in the class for children aged 0 to 2 years are based on household income. However, the fees for certified nursery and other schools will be free of charge from September 2025. Accordingly, the scope of childcare subsidies for Unlicensed Childcare Facilities and Private Nurseries Certified by Tokyo (Ninsho hoikusho) will also be expanded.

Eligibility

First child in the class for children 0 to 2 years old

Childcare fees to be free of charge

Certified Nursery Schools, Centers for Early Childhood Education and Care and Minato City Nursery Facilities

Programs in which the scope of childcare fee subsidies will be expanded

Unlicensed Childcare facilities

¥100,000 or daycare fee, whichever is lower

Private Nurseries Certified by Tokyo (Ninsho hoikusho)

Basic childcare fee for a month-to-month contract of up to 220 hours per month (160 hours for short-time certification)

Other

Fees for the following programs will also be waived.

- Minato Childcare Support (Scheduled childcare service)
- Minato Children's Daycare for Everyone Program (Isaragozaka Nursery School or Minami-azabu Anyone's Daycare Room)
- Regular Daycare Services for Preschool Children at Private Kindergarten Program
- Support Program for the Daycare Support Center for Children with Disabilities (user fee).

Inquiries

Regarding Childcare Fees:

Nursery School Section, Child-care Facilities Support Subsection
TEL 03-3578-2441

Regarding Minato Childcare Support:

Children and Families Support Center, Child and Family Service Subsection
TEL 03-5962-7201

Regarding Minato Children's Daycare for Everyone Program:

Child Policy Section, Child Policy Promotion Subsection
TEL 03-3578-2437

Regular Daycare Services for Preschool Children at Private Kindergarten Program:

Office of the Superintendent of Education, Educational General Affairs Subsection

TEL 03-3578-2712

Regarding Support Program for the Daycare Support Center for Children with Disabilities:

Disabled Persons' Welfare Section, Service Locations for People with Disabilities

TEL 03-3578-2667



topic Notice

〜 Pregnancy, Childbirth and Child Rearing 〜 Health Checkups and Consultations Services for Mothers and Infants



- Various consultations for pregnancy, childbirth and child rearing are available.
- In addition to the health checkups and consultations, services for expectant mothers and events for mothers and children are also provided.
- Please check the Minato City website or the Minato Mother and Child (Parent and Child) Health Handbook App for the details of the contents and how to apply.

Inquiries

Public Healthcare Subsection
TEL 03-6400-0084
FAX 03-3455-4539



Minato City website
Children / Childrearing



Minato Mother and Child
(Parent and Child)
Health Handbook App

topic Subsidy

Expansion of Babysitter Support Project (Temporary Babysitting Service)

The city subsidizes a portion of the use fee for babysitters for parents who need temporary childcare due to unexpected circumstances in their daily lives.

Matching babysitters service started

Matching babysitter is a service that allows users to select a sitter who can provide childcare services that meet the needs of the parents. If you use a matching babysitter service certified by the city, a portion of the fee will be subsidized.

Expansion of maximum hours of use for single-parent families, multiple births, and children with disabilities

The annual maximum number of hours of use will be increased to 288 hours per child for children (up to the sixth grade) from single-parent families, multiple births, and children with disabilities. Please visit the Minato City website for more information.

Inquiries

Children and Families Support Center, Child and Family Service Subsection
TEL 03-5962-7201



Babysitter
Support Project

topic Recruit

Please Join the Japanese Class, a Japanese Language Study Support Project Fostered by the Community



Learn Japanese while talking with classmates. Those who live, work, or go to school in Minato City, and studying Japanese for the first time or who studied a little can join the program.

<Four-Month Course>

Date

Every Tuesday and Friday from 10/3(Fri.) until 1/30/2026(Fri.)

Venue

Tue. class : Online

Fri. class : Shiba Park Residents' Collaboration Space or Minato International Association

Fees

¥1,000

Application

Please apply from the website from 8/19(Tue.) until 8/29(Fri.)

Inquiries

Global Community Planning Subsection
TEL 03-3578-2565



Japanese
Classes

Multilingual Interpreter Call Service

A person who needs translating service, the operator who will interpret and Minato city staff can talk in group of three. Our system allows people to choose their preferred language in advance on their smartphone, and have an entire conversation on the phone with the staff in the various departments of City Hall, through an interpreter. This service is available in 13 languages.



Multilingual
Interpreter
Call
Service

topic Information

The 40th Anniversary of the Minato City Peace City Declaration Carrying on the Hope for Peace

Events for peace

We host events every year to help residents of the city think about the importance of peace. The events include an activity report from the Minato City Youth For Peace who visited Nagasaki and junior high school students who visited Hiroshima for peacekeeping projects, the peace experience program by Minato City Youth For Peace, and the Peace Prayer Concert by High School brass band in Minato City.

Date & Time

8/23(Sat.) 1:00 p.m. to 5:10 p.m. (open at 12:30 p.m.)

Venue

LIBRA Hall (1F of Minato Park Shibaura)

Capacity

180 (In order of application)

•Childcare support is available

(Up to five children from 4 months old to preschool. Please apply by phone call by 8/15(Fri.) 5:00 p.m.)

Fees

Free of charge

Application

Please send an application form or phone call to Minato Call by 8/18(Mon.)

Minato Call (Hours: 9:00 a.m. to 5:00 p.m.)

•Until 3:00 p.m. on the first day

TEL 03-5472-3710

Peace Exhibition—80 Years After the War: Let's Think About the Importance of Peace-

List of Exhibitions at each venue

Dates and Times	Venues	Descriptions
Until 8/15 (Friday) 8:30 a.m. to 5:15 p.m. (Closed: Saturdays, Sundays, and holidays)	1F Lobby, Minato City Office	<Remember the threat of the A-Bomb> ●Hiroshima and Nagasaki A-bomb photo panel ●Nobel Peace Prize Materials (Medal replica etc.) ●Paintings from the collaboration of A-bomb survivors and high school students
Until 8/17 (Sunday) 9:00 a.m. to 8:00 p.m. (Closes at 5:00 p.m. on Sundays)	1F Exhibition corner, Arisu Iki-iki Plaza	<Tragic Ground Battle in Okinawa> ●Battle in Okinawa photo panel ●Actual documents of the Battle in Okinawa
Until 8/17 (Sunday) 9:00 a.m. to 8:00 p.m. (Closes at 5:00 p.m. on Sundays and holidays)	Multipurpose Hall, Akasaka City Library	<Young People who Risked Their Lives on the Frontlines> ●Overview panel of the Kamikaze Pilots ●Testaments of Kamikaze Pilots
Until 9/30 (Tuesday) 9:00 a.m. to 5:00 p.m. (Closes at 8:00 p.m. on Saturdays) (Closed: The third Thursday of each month)	4F Lecture Room D, Special Exhibition Room, Minato City Local History Museum (Ticket required for the Special Exhibition Room)	<Air Raids on Tokyo and the Memoirs of Survivors> ●Preserving the Colors of Memory: A Montage of Flames and Ashes Exhibition ●Panel on War Experiences of Minato Citizens
Until 8/15 (Friday) 8:00 a.m. to 11:00 p.m. (Closes at 12:00 p.m. on the last day)	1F, Minato Park Shibaura	<Threats to the World> ●UN WFP panel ●UNHCR Refugee panel ●Minato City Peace Youth Volunteers panel

List of Exhibits at All Venues

- The Minato City Peace City Declaration
- Peace message from public figures
- About The Flame of Peace

•Exhibits are subject to change without notice.

•The exhibition period and content will vary from venue to venue.

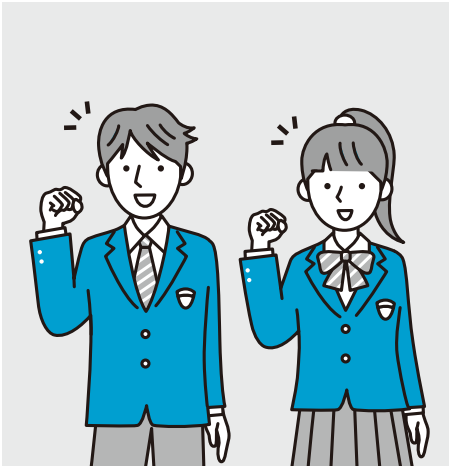
Event at Peace Exhibition Venue

Dates and Times	Venues	Descriptions
8/15 (Friday) 12:00 p.m. to 1:00 p.m.	1F Lobby, Minato City Office	Lecture by an A-bomb survivor
Until 9/30 (Tuesday) 9:00 a.m. to 5:00 p.m. (Closes at 8:00 p.m. on Saturdays) (Closed : The third Thursday of each month)	Special Exhibition Room, Minato City Local History Museum (Ticket required for the Special Exhibition Room) 4F Lecture Room D Minato City Local History Museum	<Summer Vacation Special Exhibitions> Fortieth Anniversary of the Minato City Peace City Declaration: 80 Years After the War: Rethink the War Again Minato Memories—What We Want to Convey from Memories of the War

Inquiries

General Affairs Section, Human Rights and Gender Equality Subsection

TEL 03-3578-2014



港区平和都市宣言



The 40th Anniversary of the Minato City Peace City Declaration

topic Subsidy

Mail the Application Documents on the Minato City Supplementary Benefit for Fixed Amount Tax Reduction (Deficiency Payment)

The supplementary benefit for the fixed amount tax reduction will be provided to residents who are unable to receive the supplementary benefit for fixed amount tax reduction payment implemented in FY 2024 because their income for 2024 was lower than the income for 2023 and to residents who are not eligible for the supplementary benefit for fixed amount tax reduction. This will include residents who do not receive the benefits even though they are targeted for low-income households.

Application

On 7/25(Fri.), the city mailed confirmation letters to the eligible applicants. Please complete the confirmation form and return it in the enclosed return envelope. Electronic applications are also available.

Others

If you have not received a confirmation letter and believe you are eligible, please contact the call center. If we determine you are eligible, we will send you an application form. Please complete the application form and return it in the enclosed return envelope. Electronic applications are also available.

•For those who moved to Minato City from other municipalities on or after January 2, 2024, the city is unable to mail the application forms because of the failure to have the information on the individual inhabitant tax for fiscal year 2024 and the previous benefit payments. If you believe you are eligible, please contact the call center.

•If you moved to Minato City between January 2, 2024, and January 1, 2025, and you were not subject to individual inhabitant tax in 2024 in Minato City, please use the confirmation form for new residents to help you determine eligibility.

•The confirmation form for new residents is only a guide and does not guarantee benefits.

Application Deadline

Application Form: Postmarked 9/30(Tue.)

Confirmation Form: Postmarked 10/31(Fri.)

Please visit the Minato City website or call the Minato City Supplementary Benefit for Fixed Amount Tax Reduction Call Center. Also, a consultation service is available on the 11th floor of city hall. The consultation service will guide you through the application process.

Consultation Service Opening Hours: 8:30 a.m. to 5:00 p.m.

Inquiries

Minato City Supplementary Benefit for Fixed Amount Tax Reduction Call Center

(Hours: Mon. through Fri. except holidays at 8:30 a.m. to 5:00 p.m.)

TEL 0120-577-200



Minato City Supplementary Benefit for Fixed Amount Tax Reduction.



The Confirmation Form for New Residents

topic Notice

The Resource and Garbage Collection Schedule may Change or be Cancelled if a Large Typhoon Makes Landfall



In order to continue the cleaning service, which is a lifeline for city residents, as long as possible and to ensure the safety of the residents who generate garbage, all resource and garbage collection may be canceled, or the collection times may change if a large typhoon makes landfall.

How to learn of changes or cancellations

The decision to change or cancel will be made in two stages.

1. Three to four days before the typhoon landfall

2. The morning of the day before the typhoon makes landfall

Please check the Minato City website, Disaster Prevention Information e-mail, and the Minato City official LINE account for announcements.

Inquiries

Minato Recycling and Waste Management Office, Cleaning Project Subsection

TEL 03-3450-8025

FAX 03-3450-8063

topic Information

Cheer on! 2025 MINATO CITY Learn about the World Athletics Championships and the DEAFLYMPICS

We will host sports experience events and decorate the city offices to promote the World Athletics Championships and Deaflympics to be held this year.

Sports experience event

The event will feature the World Athletics Championships and the Deaflympics competition experience, as well as talk shows with top athletes, and more events. Let's participate and receive a commemorative gift!

Eligibility

Anyone

Date & Time

8/16(Sat.) 10:00 a.m. to 4:00 p.m.

Venue

5F Arena, Minato City Sports Center

Fees

Free of charge

Things to bring

Indoor shoes

Application

No prior application is needed. Please come directly to the venue.

*You may enter and leave at your convenience.

Special Talk Show

First show: 10:30 to 11:00 a.m. (Handball)

Second show: 1:00 to 1:30 p.m. (Table Tennis)

<Guest of the Show>

Handball ZEEKSTAR TOKYO

Mr. Shogo Oyama

Mr. Hiroyasu Tamakawa

Table Tennis Kinoshita Meister Tokyo

Mr. Shohei Onodera

Mr. Keishi Hagihara

Mr. Wang Kai

Competition Experience

- 10 m sprint and race walk
- Throwing equipment display
- Deaf Table Tennis
- Deaf Handball
- VR World Athletics Championships



TOKYO 2025 DEAFLYMPICS OFFICIAL MASCOT, Yuriito



Riku One mascot of WCH TOKYO 25



Deaflympic decoration of City Offices

We will decorate the entrances and exits to all city offices to commemorate the 100th day before the Deaflympics! Please take a look!

Eligibility

Anyone

Dates

8/7(Thu.) to 11/26(Wed.)

Venue

1F Lobby, each entrance and exit, 1F ascending escalator at Fudanotuji Square, and 2F Lobby

Application

No prior application is needed. Please come directly to the venue.

Please visit the special website for more information.

Inquiries

Lifelong Learning Sports Promotion Section, Sports Promotion Planning Subsection
TEL 03-3578-2834



Cheer on! 2025 Special Website

topic Recruit

Join Us for a Course at Eco Plaza!

Eco Plaza is a facility where city residents can learn about the environment. We offer enjoyable educational courses on environmental issues.

Clothing, Food, and Shelter Tied to Ecology -Food- (Film screening & Talk Show)

Eligibility

Over 16 years old, residing, working or attending schools in Minato City

Date & Time

9/18(Thu.) 1:30 p.m. to 3:30 p.m.

Capacity

20 (Drawing by lot)

Fees

Free of charge

Start of application

8/7(Thu.) 10:00 a.m.

Wonders of Manchurian Wild Rice: Part 1

-Nature, People, Life-

Eligibility

Third grade of elementary school and above

Date & Time

9/15(Mon.)(Holiday) 10:30 a.m. to 12:00 p.m.

Capacity

20 (In order of application)

Fees

Free of charge

Start of application

8/11(Mon.)(Holiday) 10:00 a.m.

Wonders of Manchurian Wild Rice: Part 2

- Learning about the Jomon Culture of Helping Each Other with Manchurian Wild Rice -

Eligibility

Third grade of elementary school and above

Date & Time

9/30(Tue.) 6:30 p.m. to 7:30 p.m.

Capacity

30 (In order of application)

Fees

Free of charge

Start of application

8/26(Tue.) 10:00 a.m.

Paper Making Workshop -Traditional Japanese Paper and Coaster Making-

Eligibility

Junior high school students and above

Date & Time

9/27(Sat.) 10:00 a.m. to 3:00 p.m.

*There is a lunch break.

Capacity

12 (In order of application)

Fees

¥1,500

Start of application

8/23(Sat.) 10:00 a.m.

Common to all courses

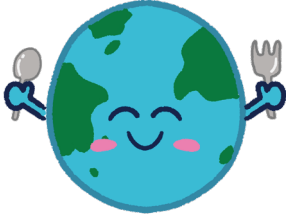
Application

Via phone call or application form

Inquiries

Eco Plaza

TEL 03-5404-7764



Eco Plaza Website

topic Information

MINATOIKU Summer Festival 2025 -Thanking for the Fifth Year-

The Minato City Children and Families Support Center (MINATOIKU) is now in its fifth year of operation. We will sponsor the MINATOIKU Summer Festival 2025 to promote opportunities for different generations, especially families with children, to interact with each other so that residents of the city can become familiar with the center as a place where they can casually drop by as well as a place to raise children together in the community.

Eligibility

Anyone

Date & Time

8/9(Sat.) 10:00 a.m. to 3:00 p.m.

Venue

Minato City Children and Families Support Center (MINATOIKU)

Inquiries

Child Consultation Section, Administrative Coordination Subsection
TEL 03-5962-6500



"Satomin" the Minato City foster parent system promotion character



Minato City Website

