

# MINATO MONTHLY

Published by Minato City

Minato Monthly can be seen at the website.



Minato City Web

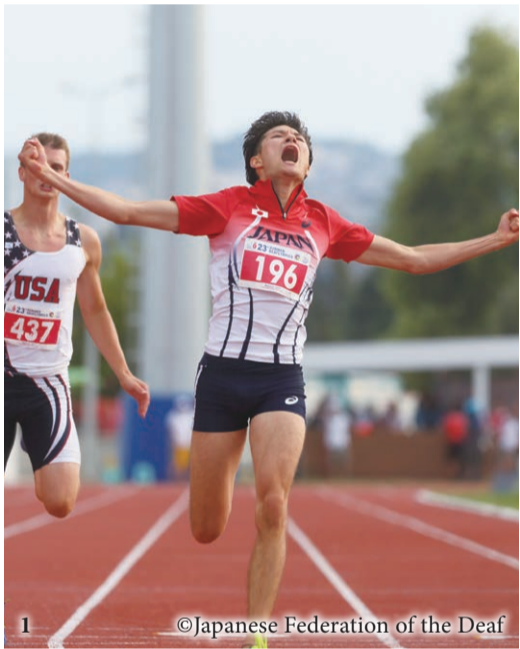


Published monthly by: Minato City Tokyo Edited by: Public Relations Subsection, Office of the Mayor, Minato City Hall, 1-5-25, Shibakoen, Minato-ku, Tokyo 105-8511  
Tel: 03-3578-2111, weekdays, 9 a.m. to 5 p.m. E-mail: kuminkoho@city.minato.tokyo.jp Web: www.city.minato.tokyo.jp Circulation: 9,500 copies

No 451 9 2024

## Cheer on! 2025 MINATO CITY

Let's learn about the World Athletics Championships and the Deaflympics



1: YAMADA Maki (Men's 200 Meters at the Deaflympics) 2: TAKADA Yuji (Men's 400 Meters Hurdles at the Deaflympics)  
3: KITAMURA Kyuta (Karate at the Deaflympics) 4: KOMATSU Ayaka (Women's 400 Meters Hurdles at the Deaflympics)  
5: SAEGUSA Hiroki, YAMADA Maki, SHITARA Akihisa, and SASAKI Takuma (Men's 4x100 meters relay at the Deaflympics)

We are holding a sports experience event and exhibitions as we approach the World Athletics Championships and the Deaflympics, which are just a year away. At each event, you can see, learn about, and experience the excitement of both competitions!

### Sports Experience Event

We will hold events such as chances to experience the World Athletics Championships and the Deaflympics, talk shows featuring top athletes, and more. Commemorative gifts will also be prepared for visitors.  
**Date & Time:** 9/29, 10 a.m. to 4 p.m.  
**Place:** Minato City Sports Center fifth floor arena  
**Talk Show Guests:** TAMESUE Dai and TAKADA Yuji  
**First show:** From 10:15 a.m.  
**Second show:** From 1:30 p.m.



TAMESUE Dai



TAKADA Yuji

### Exhibitions

To showcase the excitement of the two competitions, there will be panels introducing the World Athletics Championships and the Deaflympics, interactive exhibits where you can experience world records and exhibits of deaf sports equipment.  
For details about the venues and dates, please visit the official website.



Cheer on! 2025 official website

EDUCATION

# School Enrollment in April 2025 for Children of Foreign Nationals

Applications for children of foreign nationals who wish to enroll at municipal elementary and junior high schools in April 2025 will be accepted starting 10/1 at the School Affairs Section. Please bring father/mother’s and child’s residency cards. Please bring someone who can interpret if possible. Children who were born between 4/2, 2018 and 4/1, 2019 are eligible to enroll as first graders in 2025. Children who were born between 4/2, 2012 and 4/1, 2013 are eligible as seventh graders in 2025. Minato City will send an information letter in October regarding elementary and junior high school registration to eligible guardians whose child is residing in Minato City. Other related documents including the “School Selection Slip,” will be mailed to you after you apply.

School selection system

In principle, each child is placed in a school according to the school district policy. However, Minato City provides alternatives by allowing applicants to choose the school where they wish their children to be enrolled.

English Support Course

An English Support Course (ESC) for students of foreign nationalities staying in Japan for about 2 years, are taught in English is established at Nanzan Elementary School and Higashimachi Elementary School. Each school has a spot for 10 students per each grade. English-fluent assistant teachers will help foreign students.

Native English course at Roppongi Junior High School

An English international class is held once a week. The course offers an intensive English language curriculum for foreign students or students with competent English ability.

Japanese Support classes

Japanese support classes are available in Azabu and Kogai Elementary School, and Roppongi Junior High School. These classes are offered for foreign or returnee students studying in municipal elementary or junior high schools who are unfamiliar with Japanese language. Please note that guardians must accompany their elementary school children who are residing in other school districts when attending Japanese classes. For more details, visit the Minato City Web.

**Inquiries:** Educational Affairs Subsection,  
Tel: 03-3578-2726 to 2729



Multilingual Website



List of Elementary Schools



List of Junior High Schools

CHILDCARE SUPPORT

# Child Allowance System will Change

There will be a revision to the Child Allowance System during FY2024. Child Allowance from October onwards will be paid in accordance with the new system.

- Income limits will be removed, and all parents raising children born on or after 4/2, 2006 will be eligible to receive the allowance.
- Applicable age for children to receive the allowance will be raised to high school age.
- Allowance for a third child will be changed to ¥30,000 a month.
- Calculation for a third child will be changed. Allowance for a third child will be added from the second child born after a university-age child, namely a child who is 22 years old, and after.
- Allowance payment months will increase. Payments will be made six times in April, June, August, October, December, and February.

A notification of the system revision was sent to the heads of all households with children born on or after 4/2, 2006, at the end of July 2024. You may need to submit a notice in accordance with the revision.

**Inquiries:** Child Benefits Subsection, Tel: 03-3578-2431

CHILD BENEFITS

# Medical Expense Subsidy for Children

Minato City will send a new medical certificate to use from October to children currently covered by the Medical Expense Subsidy in a blue envelope in the middle of September. The color of the new certificate is light green. If you do not receive it by October, please contact us.

What is the Medical Expense Subsidy System for Children?

This subsidy helps families cover medical expenses for their children. It is provided to all children until the 3/31 after their 18th birthday. Please note, however, that this program only subsidizes expenses covered by health insurance.

Eligibility & registration

To be eligible to use this system, children and their guardians must live in Minato City. Children must also be a member of the Japanese health insurance plan. To register for the issuance of a medical certificate, please visit the Health and Welfare Subsection of Regional City Office

Use of the system

For the deduction at time of payment, please present your child’s health insurance card and the medical certificate to the clinic where your child is undergoing treatment. If you were unable to present the medical certificate at the time of payment, or if your child underwent treatment at a clinic outside Tokyo, you can claim the amount within about six months after treatment. Please keep the original receipt.

Note

Please notify the Health and Welfare Subsection in case of change of your child’s address, name, enrolled health insurance, and others

**Inquiries:** Child Benefits Subsection, Tel: 03-3578-2430

MEDICAL INSURANCE

# National Health Insurance System

Abolition of NHI card

With the integration of My Number card and NHI card, NHI card will be discontinued after 12/2, 2024. NHI card will no longer be issued, but you can use your current valid NHI card until the end of its valid period. Certificates of eligibility with the same details as the NHI card are to be issued free of charge on or after 12/2. Around the end of October, a notification will be sent to household through special registered delivery, informing the personal information registered to Minato City National Health Insurance Card number so you can use My Number NHI card with peace of mind. Please read and use the My Number NHI card.

A person who enrolled in social insurance

When you enroll in social insurance, you need to submit notice that you are withdrawing from NHI. Bring your new employer-issued health insurance card and NHI card and apply at Resident Support Sections of Regional City Offices. It can be applied by post. Please inquire for details.

Delayed withdrawal from NHI

If you use your NHI card after you lose your eligibility for the NHI of Minato City, you must pay back the cost of medical treatment borne by Minato City. Please complete the withdrawal procedure from NHI and return your NHI card.

**Supervising Subsection:** Eligibility and Premium Subsection

CITY EVENT

# Waterfront Festival



**Date & time:** 9/23, 11 a.m. to 4 p.m.  
**Place:** ODAIBA MARINE PARK  
**Program:** Boat race, stage event, engine-powered boat experience, beach game  
**Supervising Subsection:** Community Policy Subsection of Shibaura-konan Regional City Office



ART AND CULTURE

# Roppongi Art Night 2024

An art festival staged throughout the city of Roppongi, will be held for three days.  
**Eligibility:** Everyone  
**Dates:** 9/27 to 9/29  
**Core Time:** 5:30 to 11 p.m. on 9/27, 4 to 11 p.m. on 9/28, 4 to 8 p.m. on 9/29  
\*The core time refers to the time when the main installations and events will be held.  
\*Some of the exhibits will be on display until 10/14.  
**Place:** Roppongi Hills, Mori Art Museum, Tokyo Midtown, Suntory Museum of Art, 21\_21 DESIGN SIGHT, The National Art Center, Tokyo, Roppongi Shopping District, and other cooperating facilities and public spaces in Roppongi  
**Programs in each facility**  
Each facility has various programs.  
For detailed information, please visit the official web. Roppongi Art Night 2024 Official Website  
**Inquiries:** Roppongi Art Night Executive Committee, Tel: 050-5541-8600



Atelier Sisu *EPHEMERAL COLLECTION*



TAKAHASHI Kyota *Ronde of Flower*, 2018  
Photo: MURAKAMI Mito

LEARNING JAPANESE

# Nihongo Salon

**Dates:** Saturdays between 8/31 to 10/5  
**Details:** Talking in small groups about everyday life and culture in Japan  
**Place:** Roppongi Junior High School  
**Eligibility:** People living in Japan who can speak a little Japanese  
**Application:** Access the website from the two-dimensional code to apply



# Partner Activities Information Session

**Date:** 9/14  
**Details:** An explanation of activities to help foreign people speak Japanese with Japanese partners  
**Place:** Minato International Association  
**Eligibility:** People aged 18 and over who can speak everyday Japanese conversations  
**Application:** Submit required information by phone: 03-6440-0233 or email: minatomo@minato-intl-assn.gr.jp  
**Inquiries:** Minato International Association  
Email: nihongoclass@minato-intel-assn.gr.jp

SIGHTSEEING

# Enjoy Night View from Bridge and Beach

**Date:** 9/28, 6 to 7:30 p.m.  
**Eligibility:** Elementary school students and above  
**Course:** Meet at the Shibaura-futo Station on the Yurikamome Line – Rainbow Bridge North Route – Dismiss at the Odaiba-kaihinkoen Station on Yurikamome Line  
**Capacity:** 15 people by a lottery  
**Fee:** Free  
**Application:** Visit the Minato City Travel and Tourism Association website  
\*Write the names of accompanying people.  
Please apply by 9/11. Results will be notified to all applicants by 9/20.  
**Inquiries:** Volunteer Guide Representative, Minato City Travel and Tourism Association  
Email: minatocityvolunteertourguide@gmail.com



NOTICE

# Schedule of Municipal Libraries

**Library events**  
For the library events conducted in September, visit the Minato City Library Website.



DISASTER PREVENTION

# Preparation for Major Earthquakes

To ensure everyone’s safety during an earthquake, it’s essential to prepare for “self-help” and “mutual-help” in order to avoid injuries.

### Comprehensive Disaster Preparedness Drills

To protect our own lives and community by ourselves in case of a major earthquake, Minato City, the police department, and the fire department will cooperate together to conduct comprehensive disaster preparedness drills. Let’s call on each other, and actively participate in comprehensive disaster preparedness drills.

### Schedule

\*9:30 to 11:30 a.m.

Please participate at your convenience. Reservation unnecessary

Site	Date	Venue
Daiba	10/5	Odaiba Gakuen
Shiba	10/6	Municipal Shiba Park
Shibaura	10/19	Shibaura ES
Azabu	10/27	Roppongi JHS
Konan	11/2	Konan ES/JHS Konan-Waraku Park
Akasaka	11/3	Aoyama JHS
Takanawa	11/10	Takamatsu JHS

\*ES: Elementary School JHS: Junior High School



### Activities

Evacuation drills for handling smoke, handling of a fire extinguisher, earthquake simulation, and more.

**Note:** Activities vary depending on the site. English interpreter available  
**Supervising Subsection:** Collaboration Project Subsection of each Regional City Office

### Disaster measures in your home

- Learn about evacuation procedures and confirm your city’s evacuation sites. Decide on the means of communication for each member of your family in case of a disaster.
- Secure furniture against falling. Take extra measures to prevent furniture from toppling.
- Stock at least seven days of drinking water, emergency food, portable toilets and daily necessities.

### Assistance from Minato City

- Minato City distributes disaster prevention brochure called “Preparing for major earthquakes” in English, Chinese, Korean, and Japanese.
- Minato City provides furniture fasteners and appliances free of charge to city residents.



TRAFFIC SAFETY

## Autumn National Traffic Safety Campaign

Autumn National Traffic Safety Campaign is held from 9/21 to 9/30. There were 581 traffic accidents and 639 casualties in Minato City in the first half of 2024, decreased by 13 and 31 respectively, from the same period last year. Please obey traffic rules and manners to reduce traffic accidents.

### Focus of the Campaign

1. Prevent pedestrian traffic accidents through promoting the use of reflective goods, practicing road-crossing safety, etc.
2. Promote the early use of car lights and high-beam headlights from dusk onward and eradicate driving under the influence of alcohol
3. Wear a helmet and comply with traffic rules when riding a bicycle or specified small motorized bicycle
4. Prevent motorcycle accidents

### To Cyclists

Wear helmets when riding bicycles. Please enroll in insurance to secure yourself in case an accident occurs. Use reflective stickers on your bicycles and always turn on your lights at night to prevent traffic accidents.

**Supervising Subsection:** Community Transportation Subsection, Tel: 03-3578-2262

### Inquiries:

- Atago Police Station, Tel: 03-3437-0110
- Mita Police Station, Tel: 03-3454-0110
- Takanawa Police Station, Tel: 03-3440-0110
- Azabu Police Station, Tel: 03-3479-0110
- Akasaka Police Station, Tel: 03-3475-0110
- Tokyo Wangan Police Station, Tel: 03-3570-0110

HEALTH & SAFETY

## Tuberculosis Health Checkup

Tuberculosis is an infectious disease caused by bacteria, which causes inflammation, primarily in the lungs. Common symptoms are similar to a common cold and include cough, sputum, fever and a sense of fatigue. If cough and sputum symptoms persist for more than two weeks, it is important to visit a medical institution for a checkup. Early stage detection and early treatment are also essential to prevent the spread of infection. Please be sure to have regular chest X-ray screenings.

**Inquiries:** Public Health and Disease Prevention Subsection, Tel: 03-6400-0081

## Population of Minato City

AS OF 8/1, 2024

Total: 267,616

Japanese Residents: 245,406

Male: 114,657 / Female: 130,749

Registered Foreign Residents: 22,210

Male: 11,418 / Female: 10,792



Minato Monthly is delivered with The Japan Times/International New York Times on the first of each month. It is also available at municipal facilities, post offices and subway stations (Akabanebashi, Akasaka, Akasaka-mitsuke, Aoyama-itchome, Azabu-juban, Daimon, Gaien-mae, Hiroo, Kamiyacho, Mita, Nogizaka, Omotesando, Roppongi, Shimbashi, Shiodome, Shirokanedai and Shirokane-Takanawa) in Minato City. The articles appearing in the Minato Monthly are also found on the Minato City Web: [www.city.minato.tokyo.jp](http://www.city.minato.tokyo.jp)

**Minato Monthly home-delivery service:** For free delivery of Minato Monthly to foreign resident’s homes in Minato City, contact Minato Call or Minato Monthly by e-mail at [kuminkoho@city.minato.tokyo.jp](mailto:kuminkoho@city.minato.tokyo.jp). Please write “Minato Monthly” in the subject line.

**Minato Call**  
CITY INFORMATION SERVICE  
03-5472-3710

### Multilingual Interpreter Call Service

A person who needs translating service, the operator who will interpret and Minato city staff can talk in group of three. Our system allows people to choose their preferred language in advance on their smartphone, and have an entire conversation on the phone with the staff in the various departments of City Hall, through an interpreter. This service is available in 13 languages.

