

Earthquake Scenario
"Earthquake (M7.3) directly under the southern part of central Tokyo"

Minato City Liquefaction Map

March 2024

About the Liquefaction Map

The Liquefaction Map was created for the possibility of liquefaction by taking into account the topography and ground characteristics of each area. In doing so, the magnitude of shaking shown on the Seismic Vulnerability Map was also taken into account.

The liquefaction hazard levels indicated on this map are predictions based on the ground information obtained thus far and do not represent the degree of damage caused by liquefaction.

In addition, liquefaction countermeasures such as ground improvement that have already been taken are not reflected.

Legend

Liquefaction Hazard Level

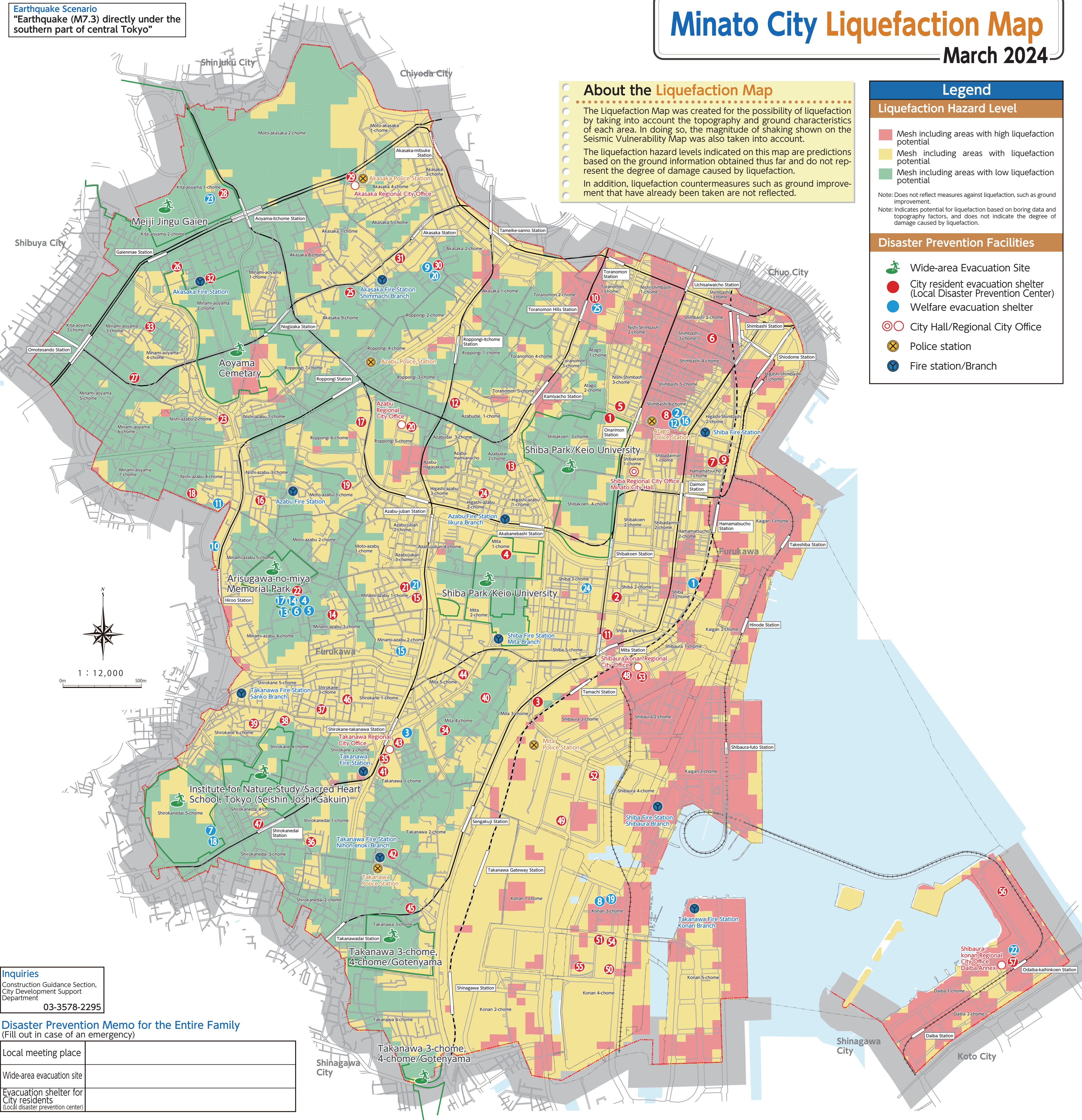
- Mesh including areas with high liquefaction potential
- Mesh including areas with liquefaction potential
- Mesh including areas with low liquefaction potential

Note: Does not reflect measures against liquefaction, such as ground improvement.

Note: Indicates potential for liquefaction based on boring data and topography factors, and does not indicate the degree of damage caused by liquefaction.

Disaster Prevention Facilities

- Wide-area Evacuation Site
- City resident evacuation shelter (Local Disaster Prevention Center)
- Welfare evacuation shelter
- City Hall/Regional City Office
- Police station
- Fire station/Branch

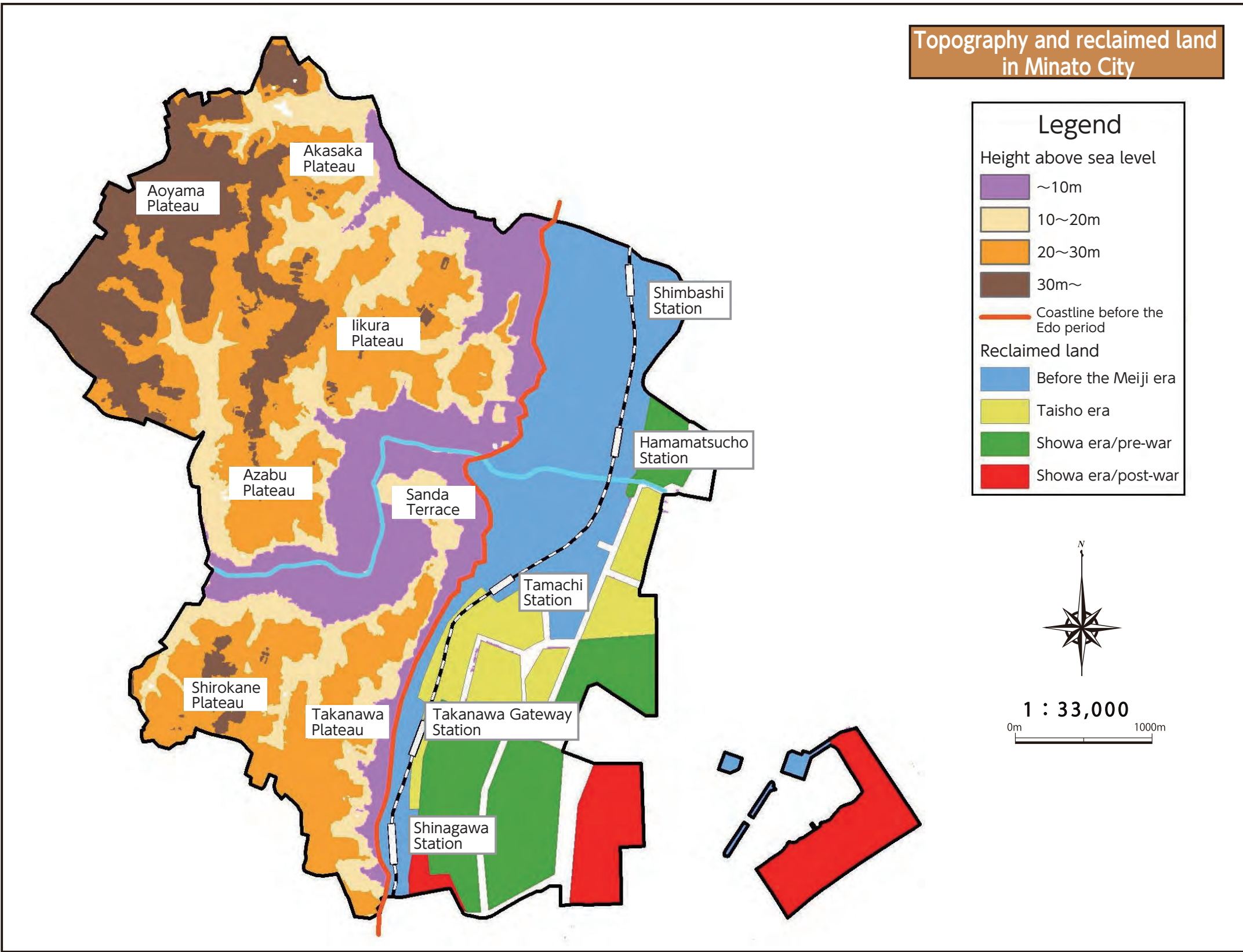


Inquiries
Construction Guidance Section,
City Development Support
Department
03-3578-2295

Disaster Prevention Memo for the Entire Family

(Fill out in case of an emergency)

Local meeting place	
Wide-area evacuation site	
Evacuation shelter for City residents (Local disaster prevention center)	



Wide-area evacuation sites/Evacuation shelters

List of wide-area evacuation sites		List of resident evacuation shelters (Local Disaster Prevention Centers)	
No.	Name	No.	Facility
1	Meiji Jingu Gaien	28	Aoyama Junior High School
2	Aoyama Cemetery	29	Akasaka Civic Center/Health Improvement Center
3	Arisugawa-no-miya Memorial Park	30	Sun Sun Akasaka (Akasaka Kids-to-Teens Hall)
4	Shiba Park/Keio University	31	Mita Elementary School
5	Institute for Nature Study/Sacred Heart School, Tokyo (Seishin Joshi Gakuin)	32	Aoyama Iki-iki Plaza
6	Takanawa 3-chome, 4-chome/Gotenyama	33	Seinan Iki-iki Plaza
7		34	Mita Elementary School
8		35	Takanawa Civic Center
9		36	Shirokane Elementary School
10		37	Former Sanko Elementary School
11		38	Shirokane-no-oka Gakuen
12		39	Shirokane-no-oka Elementary & Junior High School
13		40	Shinno Iki-iki Plaza and other complex facilities (Shinno Iki-iki Plaza)
14		41	Mita Junior High School
15		42	Takamatsu Junior High School
16		43	Takanawa Kids-to-Teens Hall
17		44	Toyooka Iki-iki Plaza
18		45	Takanawa Iki-iki Plaza
19		46	Takanawa Iki-iki Plaza
20		47	Shirokane Iki-iki Plaza
21		48	Shibahama Elementary School
22		49	Shibaura Elementary School
23		50	Konan Elementary School
24		51	Konan Junior High School
25		52	Shibaura-konan Civic Center
26		53	Minato Park Shibaura (Minato City Sports Center/Gender Equality Center)
27		54	Konan Kids-to-Teens Hall
28		55	Konan Iki-iki Plaza
29		56	Odaba Gakuen Kyo Elementary & Junior High School
30		57	Daiba Civic Center

List of Welfare Evacuation Shelters	
No.	Facility
1	Health and Welfare Center for the Disabled
2	Shimbashi Hatsuratsu Taiyo
3	Support Center for Mentally Disabled Persons
4	Support Home Minami azabu for Persons with Disabilities
5	Minato Development Support Center for Children
6	Minami-azabu Senior Garden Alice
7	Shirokane-no-Mori
8	Konan-no-Sato
9	Sun Sun Akasaka
10	Azabu Ketsukuen
11	Bell
12	Shimbashi Sakura-no-Sono
13	Arisu-no-mori Kinoko Minami-azabu
14	Rakuwa Villa Minami-azabu
15	Renaissance Azabu
16	Shimbashi Bara-no-Sono
17	Rakuwa Villa Sarasa
18	Shirokane-no-Mori
19	Konan-no-Sato
20	Sun Sun Akasaka
21	Minami-azabu
22	Daiba
23	Kita-aoyama
24	Shiba
25	Toranomon