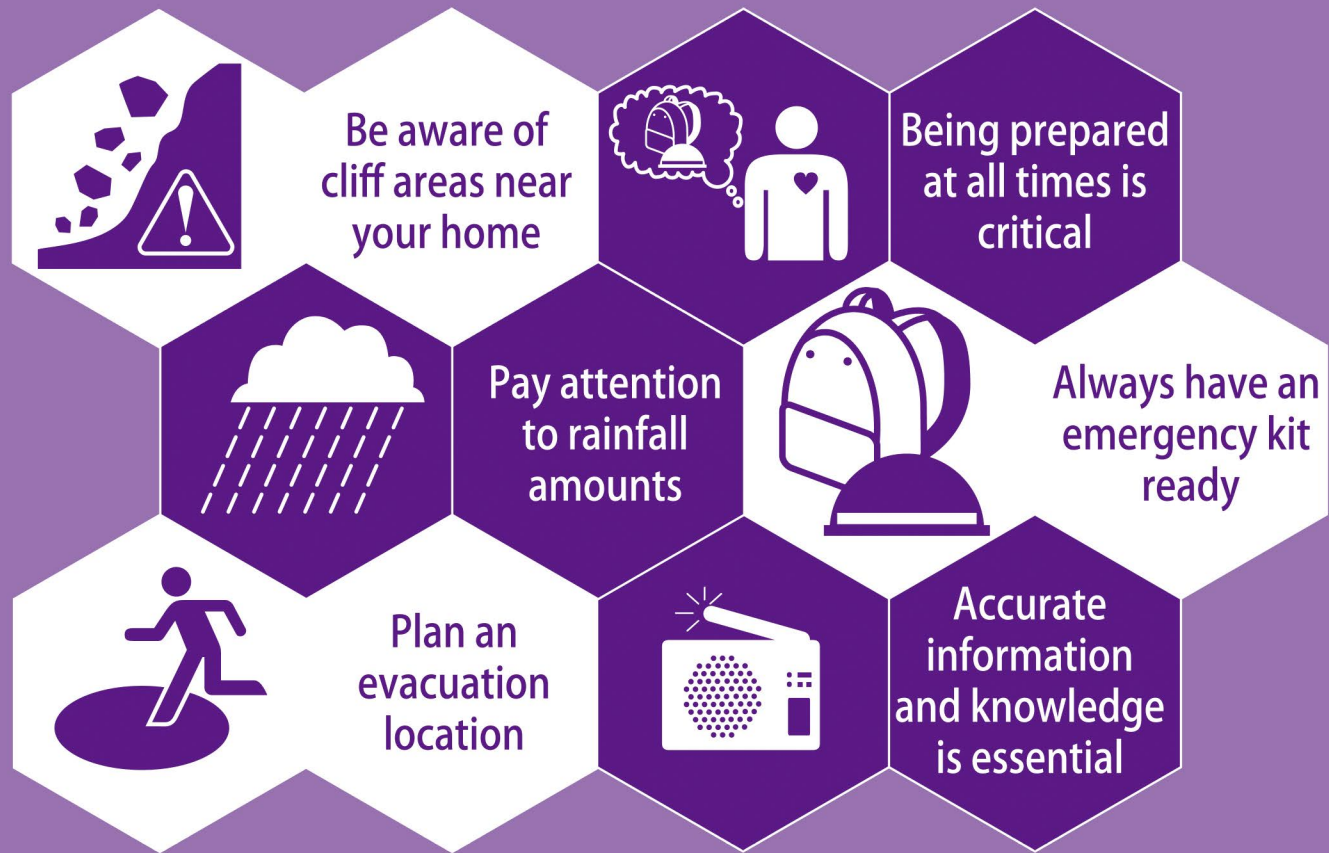


BE PREPARED!



CLIFF & RETAINING WALL REPAIR SUPPORT PROGRAM

Partial aid is available for repairing cliffs and retaining walls.

The City offers aid that partially covers the costs of repairs to cliffs or retaining walls that meet Minato City requirements. Please contact the following phone numbers for more details.

FOR MORE INFO

For aid inquiries: Structural and Quake Resistance Promotion Subsection, Construction Guidance Section

03-3578-2111 (Extension) 2845

For inquiries about the Landslide Hazard Map, contact:

Disaster Prevention Subsection, Disaster Prevention Section,
Minato City Disaster Prevention and Crisis Management Department

03-3578-2541

Publication Issuance No. 2022089-621100

Minato City LANDSLIDE HAZARD MAP

September 2019



The Minato City Landslide Hazard Map shows the designated Sediment-related Disaster Warning Areas and Special Warning Areas in Minato City as of September 2019. There are plans to designate new Sediment-related Disaster Warning Areas and Special Warning Areas in the future. When new designations are made, this map will be updated and residents will be notified.

BE PREPARED FOR LANDSLIDES



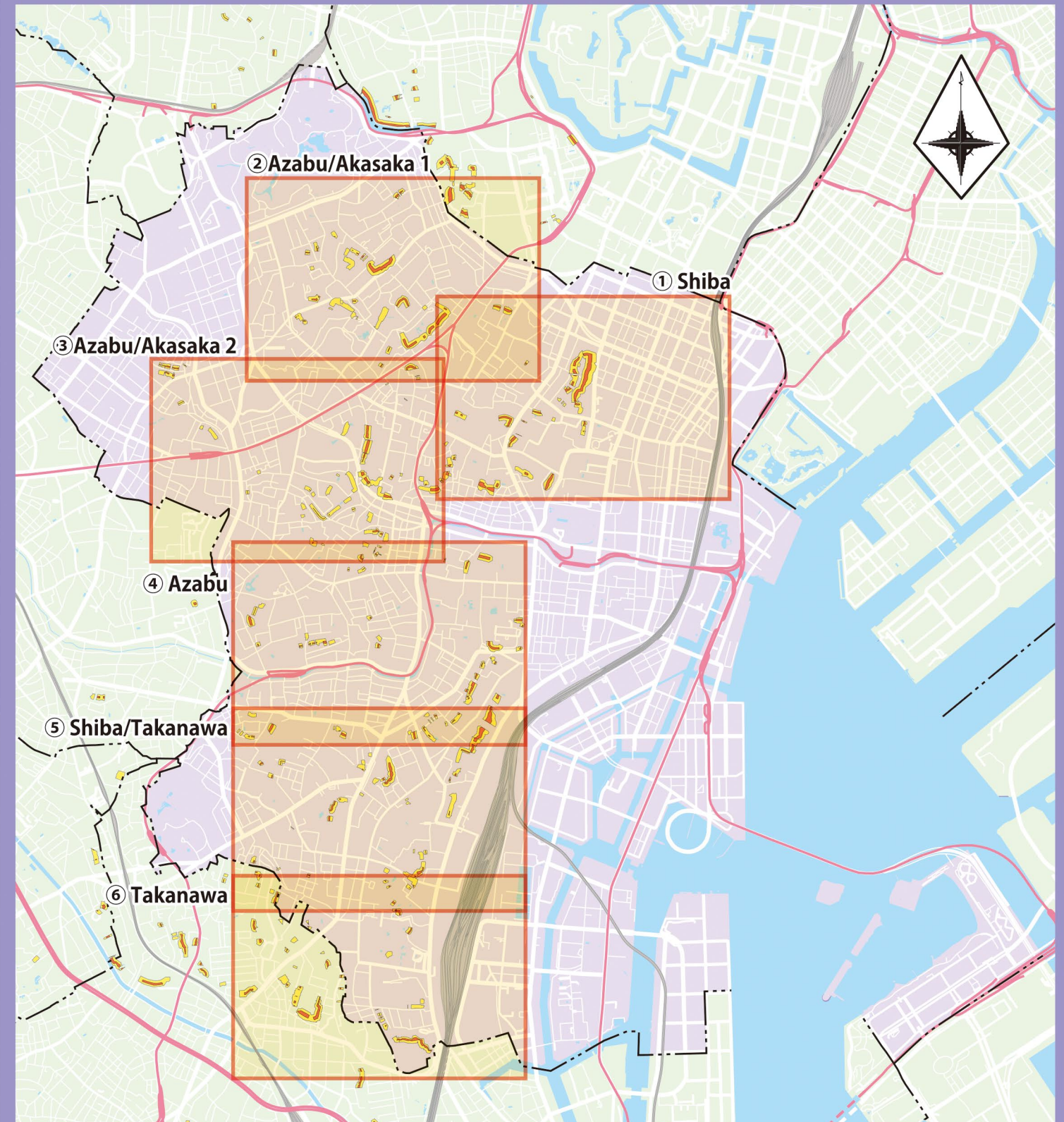
Some areas in Minato City are at risk of landslides in the event of continued heavy rain or strong earthquakes.

Based on the results of inspections carried out by the Tokyo Metropolitan Government in accordance with the Act on Sediment Disaster Countermeasures for Sediment Disaster Prone Areas (Sediment Disaster Prevention Act), Sediment-related Disaster Warning Areas and Sediment-related Disaster Special Warning Areas (see page 2) at risk of landslides were designated in March 2017 and September 2019.

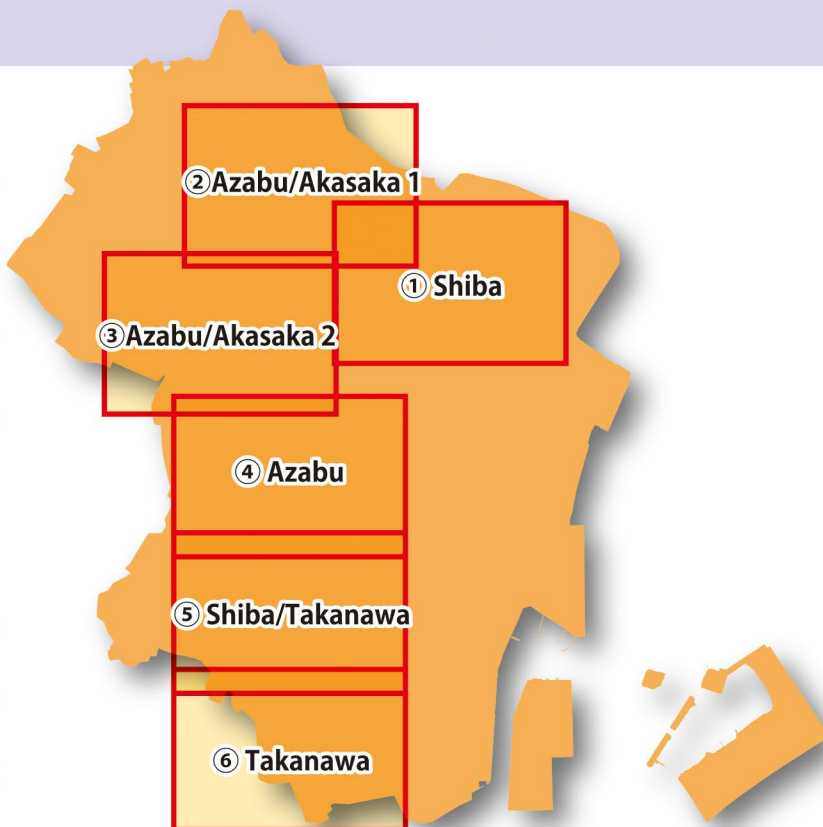
This map illustrates these Sediment-related Disaster Warning Areas and Special Warning Areas within Minato City. It also lists information and provides explanations about a variety of sediment-related disasters, as well as explaining how the City distributes this information.

Please use this Hazard Map to minimize harm and damage from landslides and other sediment-related disasters.

Full Map of Minato City



Full Map of Minato City	1
LEARN -----	2
What are Landslide Disasters?	
PREPARE -----	3
Preparing for Landslides	
EVACUATE -----	4
Evacuating from a Landslide	
ABOUT -----	5
Home-exit evacuation	
HAZARD MAPS	
① Shiba -----	6
② Azabu/Akasaka 1 -----	8
③ Azabu/Akasaka 2 -----	10
④ Azabu -----	12
⑤ Shiba/Takanawa -----	14
⑥ Takanawa -----	16



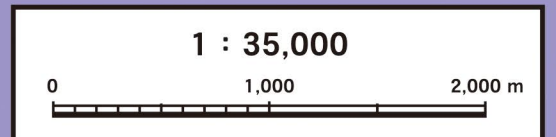
There are no hazardous locations with regard to Sediment-related Disaster (Special) Warning Areas in Shibaura Konan.

*Approved by the head of the Geospatial Information Authority of Japan (GSI) based on the Survey Act (usage) R 4JHs 165

LEGEND

	Sediment-related Disaster Warning Areas (Yellow Zones)
	Sediment-related Disaster Special Warning Areas (Red Zones)

*See P2 "What Are Landslide Disasters?" for details



Created by editing the GSI Maps Vector

WHAT ARE LANDSLIDE DISASTERS?

There are three kinds of natural phenomena that can cause sediment-related disasters, also known as landslide disasters: collapses of steeply sloping ground, debris flows, and landslides. **Some areas in Minato are at risk of collapse of steeply sloping ground (cliff collapse).**

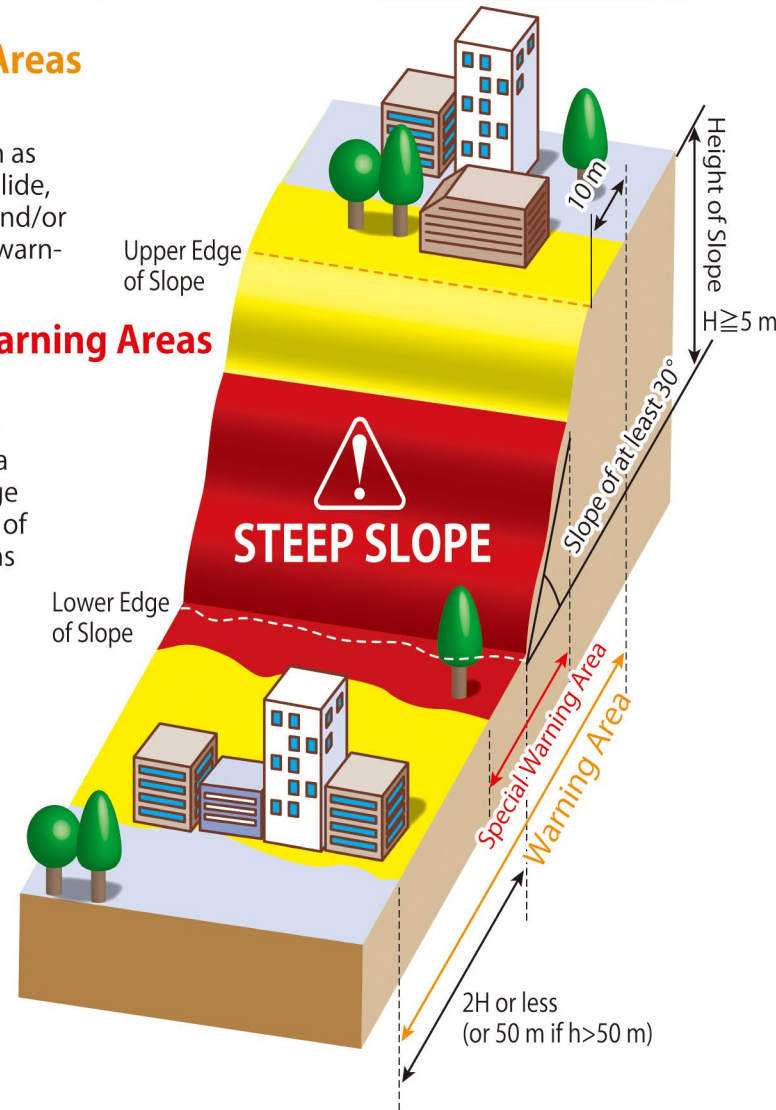
LANDSLIDE-PRONE AREAS

Sediment-related Disaster Warning Areas (Yellow Zones)

Sediment-related Disaster Warning Areas (also known as Yellow Zones) are areas where, in the event of a landslide, etc., there is an acknowledged risk of physical injury and/or loss of life of residents. In Yellow Zones, information, warning, and evacuation systems are in place.

Sediment-related Disaster Special Warning Areas (Red Zones)

Sediment-related Disaster Special Warning Areas (also known as Red Zones) are areas where, in the event of a landslide, etc., there is an acknowledged risk of damage to buildings and significant physical injury and/or loss of life of residents. In Red Zones, development restrictions and structural regulations for buildings such as those below are in place.



EXAMPLES OF RULES FOR SPECIAL WARNING AREAS

- Licensing for Designated Development Activities**
 The sale of housing lots and the construction of facilities associated with people who require consideration shall be licensed only if standards are followed.
- Architectural Structure Regulations**
 Structures containing living spaces shall be certified for structural safety against anticipated forces, as stipulated in the Building Standards Act.
- Building Relocation, etc., Advice**
 Advice on relocation, etc., may be available for owners, etc., of buildings that are at risk of massive damage.

INFORMATION REGARDING LANDSLIDES & HEAVY RAINFALL

Sediment-related Disaster Warning Information

Sediment-related Disaster Warning Information is issued jointly by the Tokyo Metropolitan Government and the Japan Meteorological Agency, in consideration of the time required for evacuation in accordance with levels established after thoroughly investigating sediment disasters that occurred in the past. Should these levels be reached, the occurrence of a landslide disaster would be no surprise. If you live in one of the Sediment-related Disaster Warning Areas, etc., please be aware of the surrounding conditions and the rainfall, and if you feel danger, do not hesitate to evacuate voluntarily.

Japan Meteorological Agency Website
(Weather Warnings/Advisories)



<https://www.jma.go.jp/bosai/map.html#5/34.5/137/&elem=landslide&contents=warning&lang=en>

Record Short Duration Rainfall Information

When short duration heavy rainfall, which occurs only once every few years, is observed and analyzed, the resulting data is announced by local meteorological observatories. The first or second highest recorded rainfall amount (the amount of rain in an hour) is used as a reference when determining general standards for regional forecasts in the relevant prefecture. This amount of rain is used as a threshold level for heavy rainfall warnings. It indicates rarely recorded levels of rainfall that may lead to landslides, flooding, and rivers overflowing. The threshold level for Tokyo is 100 mm of rain per hour.

PREPARING FOR LANDSLIDES

CAUTIONS FOR LANDSLIDES

Beware of dangerous areas

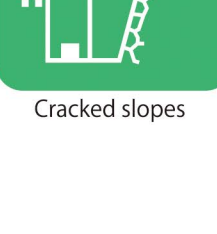
Be careful of places where the ground hasn't been stable in a long time.



Overhang above a slope



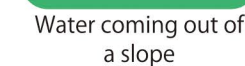
Rocks sticking out from a slope



Cracked slopes



Slopes of 30° or more



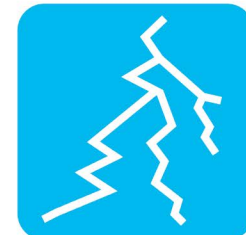
Water coming out of a slope

Pay attention

If you see or hear any of the following, evacuate immediately.



Small rocks falling from a slope



Cracks in a slope



Rumbling from the ground or sounds of tree roots being torn



Water falling from a slope

During heavy rainfall...



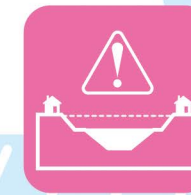
Pay attention to weather news



Listen to notices from disaster prevention groups



Prepare to quickly evacuate if you live near a cliff or river



Watch for rising water levels, e.g. of the Furukawa River and Arakawa River



If you feel unsafe, do not wait for evacuation information from Minato City - please evacuate by yourself.

Disaster E-mail & App

Minato City Disaster Information E-mail Service

Minato City sends out emails with disaster-prevention information regarding earthquakes, heavy rain, flooding, etc., to the mobile phones, smartphones, tablets, and computers of residents and workers in the city.

HOW TO SIGN UP

- Send a blank e-mail to the following:
t-minato@sg-p.jp
If you have a mobile phone that can read barcodes, scan the QR code below.
- You will receive an e-mail from the Minato City Disaster Information E-mail Service. You will see the URL of the registration form in the e-mail; please access the registration screen.
- Review the terms of use and press "Agree."
- Select the distribution category, enter the registration information, and press "Confirmation screen."
- Check the entry and register it.



Smartphone/PC



Feature phone

*Select Japanese or English. Language selection can be made on each page.

Disaster Prevention App

We provide a free Disaster Prevention App to residents and workers in Minato to help spread disaster knowledge. Please use the app to prepare for disasters and check on disaster risks.

MAIN CONTENT

- Disaster maps
- Area disaster maps
- Water level/precipitation info
- Safety information
- Useful links
- Disaster information
- Tools
- Disaster guides

Download the Disaster Prevention App



iPhone



Android

The Disaster Prevention App is available for download from the App Store for iPhones and from Google Play for Android phones. You can find the app by searching for the words "Minato City Disaster Prevention App" on the relevant app store.

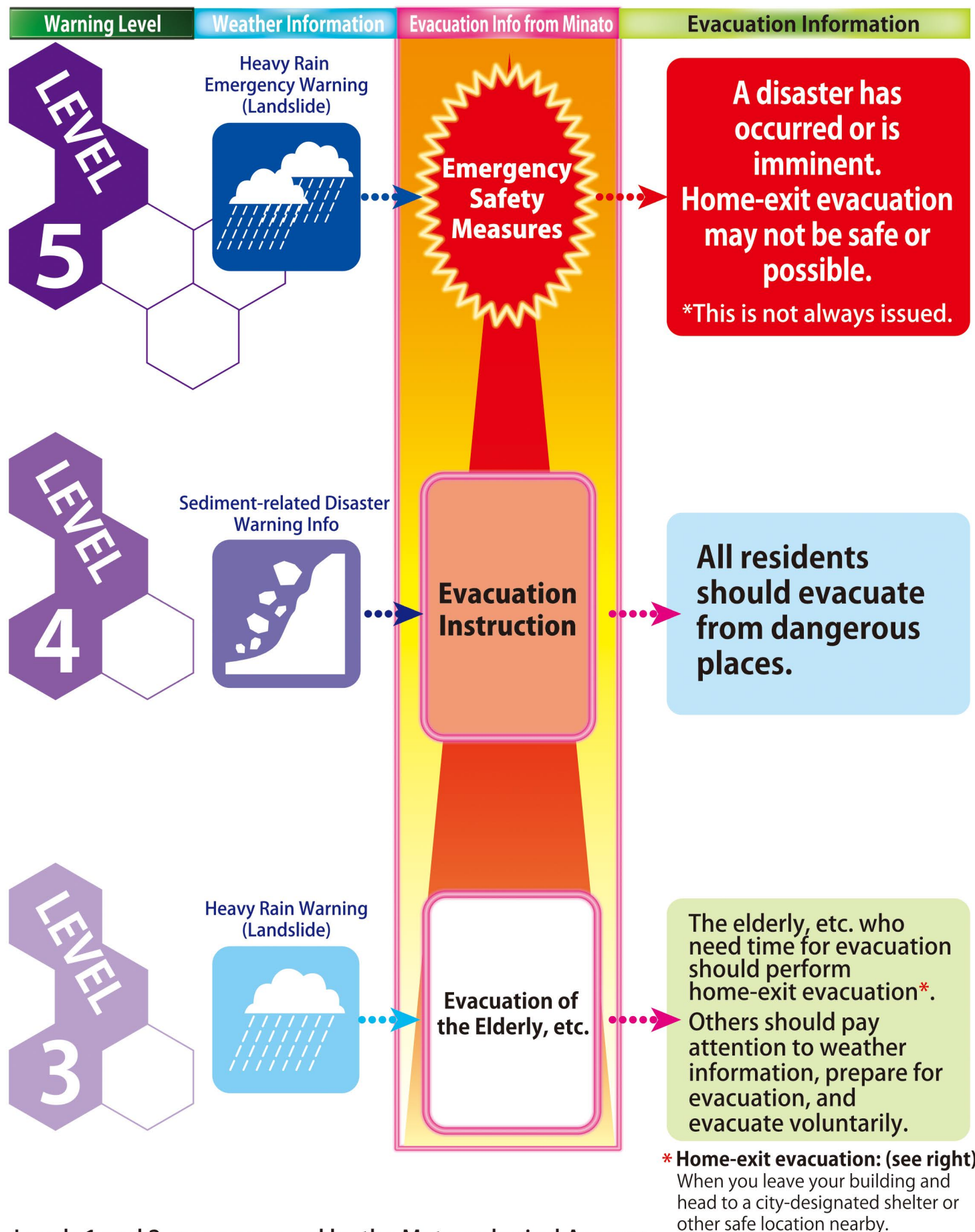
Disaster Prevention Wireless System Hotline

If you are unable to hear announcements from the Disaster Prevention Wireless System speaker towers, you can check the announcements by calling the following phone number:

03-5401-0742

EVACUATING FROM A LANDSLIDE

LANDSLIDE-RELATED WEATHER INFO & EVACUATION PROCEDURES



Levels 1 and 2 are announced by the Meteorological Agency.

ABOUT HOME-EXIT EVACUATION

Announcement of Evacuation Info



**H
E
A
V
Y

R
A
I
N**

- Disaster Prevention Wireless System
- Emergency Warning E-mail (Area Mail)
- Blue Crimewatch Patrol Cars
- Digital Signboards
- Disaster Info E-mail
- Minato City Website
- Twitter
- Facebook
- Disaster Prevention App
- LINE

