



[Digest Version]

Minato City Environment Master Plan

FY2021-FY2026

FY2023 Revised Edition

Minato, a sustainable city where diverse
lifestyles, vitality, and nature are in harmony
—How we're building the earth's future—



1 Perspectives on the Plan's Revision and the Positioning of the Plan

(1) Perspectives on the Plan's Revision

Great changes are taking place in trends that shape Minato City's environmental measures. Among the driving forces are the increasing pace of measures against global warming in an effort to achieve carbon neutrality by 2050, the issues of food loss and plastic waste, and the growing momentum of efforts to conserve biodiversity, not to mention the spread of the COVID-19 pandemic.

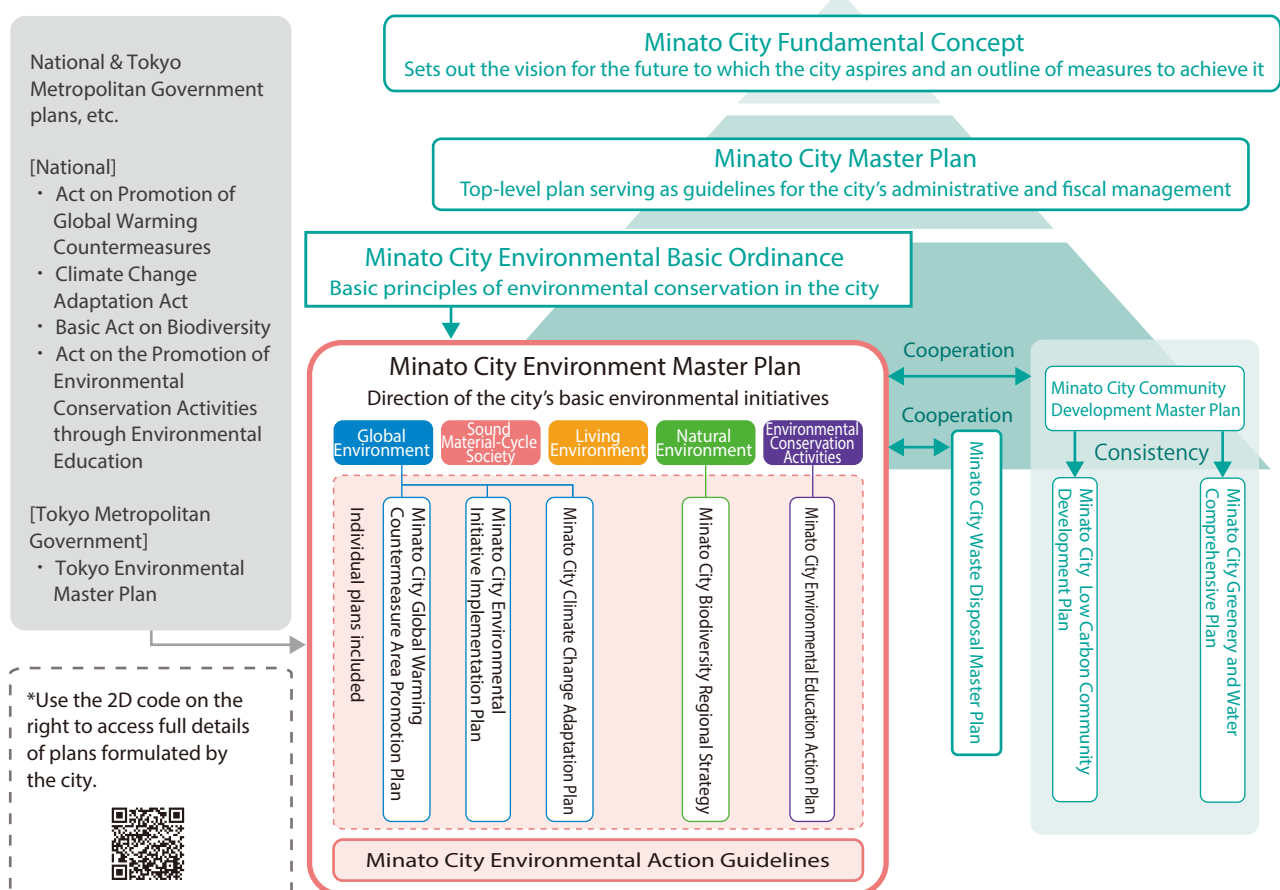
In light of social changes since this Plan's formulation, along with domestic and international trends in the environmental field, the results of surveys conducted among residents and business operators, and issues emerging from these, we have revised this Plan from the following perspectives.

Perspectives on Revision

- (1) To update objectives and measures in light of recent trends, with a primary focus on measures against climate change and biodiversity conservation measures.
- (2) To enhance not only collaboration between the city and diverse entities, but also forums and mechanisms that generate collaboration/cooperation among assorted entities.
- (3) To set out specific projects to be undertaken over the latter three year period covered by the Plan, with a view to ensuring integrated problem-solving.

(2) Positioning of the Plan

The Minato City Environment Master Plan is a plan for the environmental sector that seeks to realize the basic policies of Minato City's comprehensive overall plan, the Minato City Master Plan. While remaining consistent with other related plans such as the Minato City Community Development Master Plan and the Minato City Greenery and Water Comprehensive Plan, this plan sets out the basic direction for the City's environment-related initiatives, and serves as our comprehensive document for environment-related plans.



2 Vision for the Environment and Basic Objectives

Minato, a sustainable city where diverse lifestyles, vitality, and nature are in harmony
—How we're building the earth's future—

We aim to build a sustainable city in which various elements are in harmony—such as the diverse lifestyles as well as social and economic activities operating in Minato City, and the long history and the rich natural environment that are the characteristics of the city. Where everyone can live and engage in activities safely and securely while looking to the future, while acting independently to address assorted challenges. To this end, we have drawn up the basic objectives, and shall promote the relevant measures and initiatives.

Global Environment

Basic objective 1

A safe and secure city through the realization of a decarbonized society and adaptation to climate change

With a strong awareness of climate change, which can also be termed as a climate crisis, we shall cooperate with the citizens and businesses of Minato City, and with the Government of Japan and Tokyo Metropolitan Government, to confront this climate crisis. We shall also contribute to reducing greenhouse gas (CO₂) emissions in Minato City effectively to zero by 2050, and bring about the realization of a decarbonized society. At the same time, we aim to promote adaptation to the impact of climate change, which is expected to become even more severe, and to realize a city where people can live and work safely, securely, and comfortably.

Sound Material-Cycle Society

Basic objective 2

A city that reduces waste and recycles resources

Social and economic activities based on mass production and mass consumption create a society of mass disposal, and give rise to various environmental issues. Accordingly, by establishing among citizens and businesses a shared recognition that they are creating the causes of these problems as “waste generators,” and by promoting responsible actions such as reducing waste and complying with waste disposal rules, we aim to realize a city that reduces waste and recycles resources.

Living Environment

Basic objective 3

A city where people can enjoy comfortable and healthy lives

We aim to realize a city where everyone can enjoy comfortable and healthy lives. To that end, we shall properly implement countermeasures against air pollution, water pollution, noise, vibrations, offensive odors, soil pollution, ground subsidence, and hazardous chemical substances. At the same time, we shall promote consideration for the surrounding living environment in urban development projects, and cooperate with Minato City's citizens, businesses, and other entities to beautify the local environment.

Natural Environment

Basic objective 4

A city that values the benefits of water and greenery, and the blessings of biodiversity

While creating an ecological network of interconnected waterfront areas and green areas of varying scales that are inhabited by more than 2,000 species of diverse living things, we aim to realize a city that values the benefits of water and greenery, and the blessings of biodiversity, and where its residents, workers, and visitors can feel at ease with other living things.

Environmental Conservation Activities

Basic objective 5

A city where those engaged in environmental conservation connect with each other and enhance their activities

In order to pass on a good environment to future generations without leaving them with the burden of the various environmental issues that we face today, we aim to raise awareness among individuals through environmental education and learning, and to realize a city that connects people engaged in environmental conservation and expands the scope of their activities.

A safe and secure city through the realization of a decarbonized society and adaptation to climate change

Relevant SDGs



Minato City Global Warming Countermeasure Area Promotion Plan

CO₂ emissions reduction target in Minato City

Reduce CO₂ emissions in Minato City by
▲40% from FY2013 levels by FY2026

Minato City Environmental Initiative Implementation Plan

CO₂ emissions reduction target for Municipal Facilities

Reduce CO₂ emissions per unit area for
 municipal facilities by
▲45% from FY2013 levels by FY2026

Measure 1 Promotion of decarbonization to become a Zero Carbon City by 2050

<Initiatives>

1-i Optimization of energy efficiency and use in buildings

1-ii Expanding the adoption of renewable energy
 (MINATO Renewable Energy 100 project to promote
 greater use of renewable energy)

1-iii Decentralization of movement through a wide range
 of means of transportation

1-iv Absorption of CO₂ through greening

1-v Carbon dioxide absorption via the development of marine
 forests (Use of blue carbon ecosystems)

1-vi Promotion of decarbonization at municipal facilities



MINATO Renewable Energy 100 logo

Measure 2 Promotion of decarbonization through wide-area cooperation

<Initiatives>

2-i Promotion of utilization of Japanese timber

2-ii Absorption of CO₂ through forest development

2-iii Adoption of renewable energy through nationwide cooperation

Examples
 of the use of
 Japanese
 timber



Municipal facility



Tenanted premises, etc.

Measure 3 Approaches tailored to the entities involved

<Initiatives>

3-i Promotion of energy-saving behavior at workplaces and homes

3-ii Promotion of the adoption of energy creation/energy-saving
 equipment

3-iii Promotion of the popularization of hydrogen energy

3-iv Promotion of waste emission control and recycling

Minato City Climate Change Adaptation Plan

Goal

To realize a city that is resilient against various crises brought about by the impact of climate change, and where everyone can live and work safely, securely, and comfortably.

Measure 4 Increased urban resilience via adaptation to climate change, and safe, secure urban development

<Initiatives>

4-i Mitigating the risks of natural disasters

4-ii Spreading and raising awareness of the impact on health

4-iii Promotion of heat countermeasures and urban heat island countermeasures



Minato Water Sprinkling

A city that reduces waste and recycles resources

Basic objective

2



Relevant SDGs

Measure 5 Promotion of 3R initiatives that take account of citizens' lifestyles

<Initiatives>

- 5-i Upgrading of plastic resource recycling and recycling techniques
- 5-ii Reduction of food loss
- 5-iii Expansion of resource recovery
- 5-iv Promotion of resource recovery by group collection
- 5-v Promotion of reuse
- 5-vi Spreading and raising awareness, and enrichment of environmental learning



Promotional wrapping of a garbage truck to raise awareness of the ocean plastic problem



"Furniture Recycling Display," where good quality wooden furniture, etc., disposed from homes in Minato City, but still in good condition, is exhibited and sold

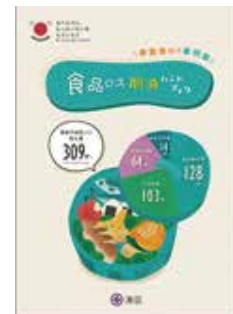
Measure 6 Promotion of resource recycling tailored to changes in the business environment

<Initiatives>

- 6-i Strengthening self-disposal responsibility for large-scale buildings for business
- 6-ii Spreading and raising awareness, and provision of appropriate guidance to business operators
- 6-iii Strengthening self-disposal responsibility among businesses that generate small amounts of waste
- 6-iv Strengthening extended producer responsibility
- 6-v Promotion of increased use of online services, etc.



Award scheme for businesses



The Food Loss Reduction Handbook providing user-friendly explanations of effective initiatives for reducing food loss

Measure 7 Construction of social infrastructure based on proper waste disposal

<Initiatives>

- 7-i Roll-out of collection services corresponding to the local characteristics
- 7-ii PR concerning resource recycling that taps into the Minato Resource Recycle Center
- 7-iii Strengthening of response capability during emergencies and disasters
- 7-iv Prevention of improper discharge of hazardous materials, etc



Facilities at Minato Resource Recycle Center were updated in FY2022

A city where people can enjoy comfortable and healthy lives

Relevant SDGs



Measure 8 Securing a good living environment

<Initiatives>

- 8-i Conservation of a clean air environment
- 8-ii Promotion of thorough guidance and awareness raising on noises and vibrations, foul odors, etc.
- 8-iii Promotion of asbestos countermeasures
- 8-iv Promotion of countermeasures for hazardous chemical substances, etc.

Measure 9 Promotion of environmental consideration in community development

<Initiatives>

- 9-i Promotion of environmental assessment
- 9-ii Guidance on appropriate community development that is environmentally friendly

Measure 10 Promotion of environmental beautification activities

<Initiatives>

- 10-i Promotion of initiatives to create a clean and beautiful city



Leaflet about the project on measures against illegal dumping of waste on private land

- 10-ii Promotion of Minato City Smoking Rules

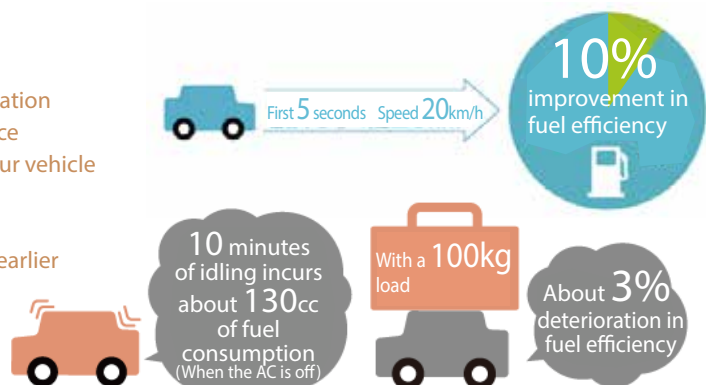


Enclosed outdoor smoking area that is highly effective in smoke separation, while remaining considerate of the surrounding environment (Shimbashi Station Front SL Plaza designated smoking area (container-style facility))

[Reference] 10 Recommendations for Eco-Driving

Eco-driving refers to driving that gives consideration to fuel efficiency and safety. Mindful driving that reduces fuel consumption and CO₂ emissions also contributes to safe driving and reduction in the number of traffic accidents.

1. Ascertain the fuel efficiency of your vehicle
2. e-Start: Accelerate your vehicle gently
3. Drive your vehicle with less acceleration and deceleration actions by keeping an adequate inter-vehicle distance
4. Release the accelerator earlier when decelerating your vehicle
5. Use the in-car air conditioner appropriately
6. Stop inefficient idling of the engine
7. Avoid driving in traffic jams by leaving home a little earlier
8. Inspection and maintenance of tire air pressure
9. Unload unnecessary belongings from your vehicle
10. Do not park your vehicle where it blocks the passage of other vehicles



Source: created based on the COOL CHOICE website

A city that values the benefits of water and greenery, and the blessings of biodiversity

Basic objective
4



Relevant SDGs

Measure 11 Improving water quality of the Furukawa River, canals, and the sea at Odaiba

<Initiatives>

11-i Improving the water environment at the Furukawa River

11-ii Improving the water quality of the sea at Odaiba and also of canals

Measure 12 Conservation and restoration of waterfront spaces and water circulation systems

<Initiatives>

12-i Enrichment of water amenity spaces

12-ii Conservation and restoration of healthy water circulation systems



Water amenity space at the waterfront

Measure 13 Conservation and creation of abundant high quality greenery

<Initiatives>

13-i Conservation and creation of greenery, and spreading and raising awareness, in cooperation with the citizens of Minato City

13-ii Promotion of diverse greening on private land

13-iii Promotion of greening in public spaces



Greening facility on private land
(Recipient of the FY2023 Minato City Green Community Development Award)

Minato City Biodiversity Regional Strategy

Long-term goal of the Minato City Biodiversity Regional Strategy

The strategy aims to achieve the following vision for Minato City in 2050

Minato, a community full of smiles through the coexistence of community vitality and living things, and with gratitude for the bounty of biodiversity

Measure 14 Understanding and spreading awareness of biodiversity

<Initiatives>

14-i Spreading and raising awareness of biodiversity

14-ii Promotion of environmental learning through learning about biodiversity

14-iii Initiatives in cooperation with diverse entities

Measure 15 Conservation and restoration of biodiversity

<Initiatives>

15-i Formation of a biotope and an ecological network

15-ii Promotion of community development that gives consideration to living things

15-iii Prevention of invasion and spread of alien species

15-iv Studies concerning biodiversity and the natural environment



Rice harvesting experience in a rice paddy in Shibaura Park



Biodiversity Panel Exhibition, with the participation of members of the Biodiversity Minato Network and others



Wildlife monitoring in Arisugawa-no-miya Memorial Park



A city where those engaged in environmental conservation connect with each other and enhance their activities

Relevant SDGs



Minato City Environmental Education Action Plan

Policy for the Environmental Education Action Plan

- Minato City will take every possible opportunity to promote environmental education and environmental learning activities to deepen understanding and interest in environmental conservation among people living, studying, and working in Minato City, so that they can take on the responsibility of environmental conservation.
- Minato City will promote environmental conservation in cooperation with citizens, businesses, education and research institutes, environmental activity groups, and other diverse entities.

Measure 16 Strengthening the environmental conservation mindset through environmental education

<Initiatives>

- 16-i Promotion of environmental education, and human resource development
- 16-ii Dissemination of environment-related information, and strengthening the environmental conservation mindset

Publicity leaflet on Minato City Smoking Rules in four languages as a part of efforts to disseminate information to non-Japanese residents of Minato City and visitors from other countries



A forest owned by Akiruno City has been borrowed and developed as a carbon sink known as the Minato Citizens' Forest, which is used as a space for learning about the environment and experiencing nature

Measure 17 Promotion of environmental conservation activities through cooperation

<Initiatives>

- 17-i Promotion of environmental conservation activities
- 17-ii Support for the activities of citizens, businesses, etc.



Corporations and Environment Exhibitions, organized by the minato eco-conscious consortium (mecc), which engages in environmental conservation activities in cooperation with businesses, Minato City, and its residents

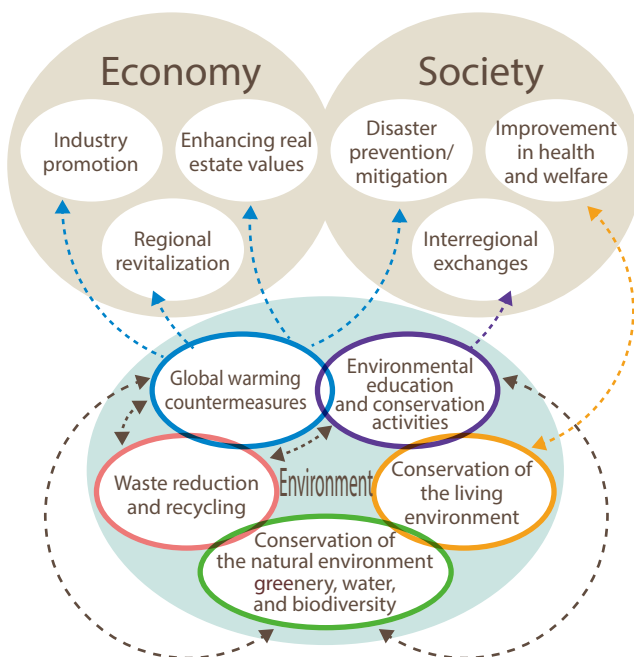


Award ceremony for independent environmental research projects by elementary and junior high school students

3 Development of Measures Aimed at Integrated Problem Solving

In recent years, it has been necessary for environmental measures not only to function as a solution for environmental issues, but also to contribute to integrated problem solving for environmental, economic, and social issues by leveraging secondary effects on other sectors such as welfare, disaster prevention, and education.

Minato City is developing measures aimed at integrated problem-solving with a focus on the following three points, while harnessing the track record of collaborative and cooperative activities as well as the strengths of the environmental conservation and regional revitalization efforts that the City has undertaken to date in cooperation with local governments across Japan, as well as various entities engaged in environmental conservation, such as the minato eco-conscious consortium (mecc) and the Minato City 3R Promotion Action Council.



(1) Cooperation with local governments across Japan

Minato City will further promote cooperation with local governments across Japan, which helps urban residents of Minato City gain spaces and opportunities for learning about forests and nature, and at the same time, contributes to environmental conservation and revitalization in the partner communities.

- | | |
|-----------|--|
| Example 1 | Minato City and Akiruno City Environmental Exchange Project |
| Example 2 | Unified Networking Initiative for Minato "Mori & Mizu" Meeting |
| Example 3 | Utilization of the natural capital in each region |

(2) Cross-sectoral cooperation

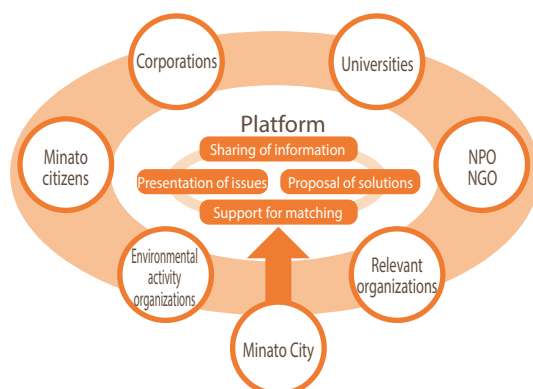
By leveraging the secondary effects of environmental measures on other sectors such as welfare, disaster prevention, and education, and engaging in cross-sectoral cooperation, Minato City will contribute to the development of a city where everyone can live with peace of mind.

- | | |
|-----------|---|
| Example 1 | Cooperation with the welfare sector |
| Example 2 | Cooperation with the disaster prevention sector |
| Example 3 | Cooperation with the education sector |

(3) Co-creation with the private sector

Taking full advantage of its characteristic of being the home to many private organizations, including NPOs, as well as companies and universities with cutting-edge technology, Minato City will collaborate and cooperate with various private-sector organizations to develop initiatives that contribute to the improvement of the environment, economy, and society in an integrated manner.

- | | |
|-----------|--|
| Example 1 | Recruitment of proposals for initiatives that contributed to the integrated improvement of the environment, economy, and society, and support for the realization of the proposals |
| Example 2 | Development of platform-based activities |
| Example 3 | Deliberations aimed at gaining Natural Symbiosis Site certification |



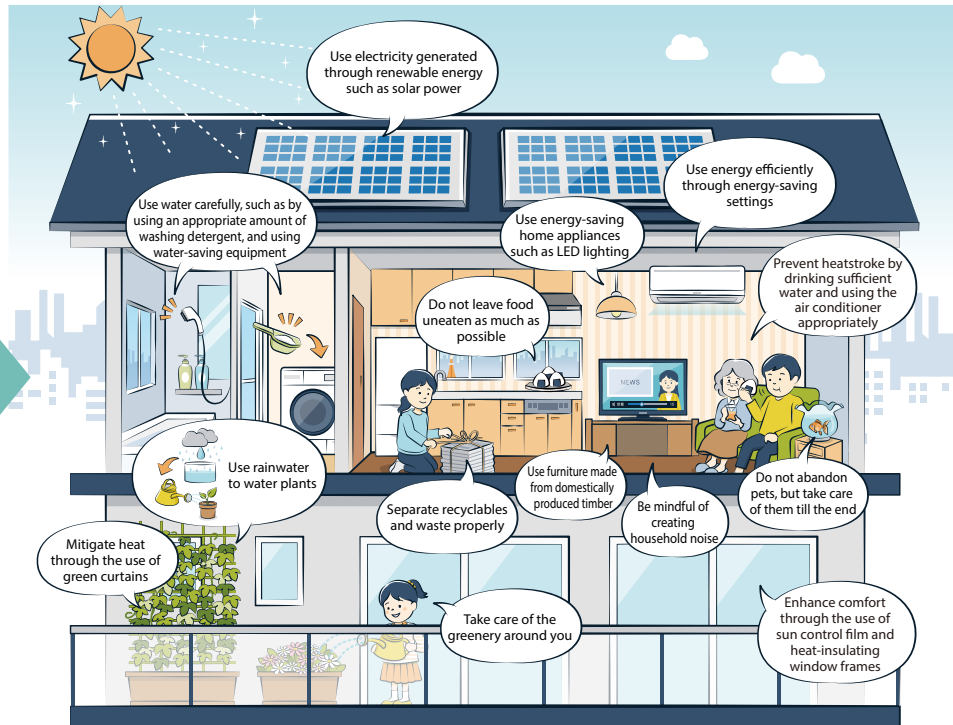
4 Environmental Action Guidelines

The Environmental Action Guidelines are matters related to environmental conservation that should be considered by citizens, businesses, and the Minato City government in their efforts to realize the environmental vision.

(1) Citizens

The Environmental Action Guidelines for citizens introduce examples of actions based on three scenarios: in the home, in the community, and when shopping.

In the home



In the community



When shopping



(2) Businesses

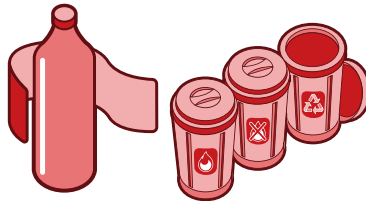


Global Environment

- Implement workstyles that contribute to energy saving
- Use energy efficiently
- Promote the use of decarbonized energy
- Use methods of transportation with low CO₂ emissions
- Contribute to CO₂ absorption and fixation by forests, through the use of domestically produced timber
- Understand the impact of climate change and the urban heat island phenomenon, and take precautions

Sound Material-Cycle Society

- Reduce waste
- Actively use eco-friendly products
- Ensure thorough separation of recyclables from waste
- Dispose of waste properly
- Participate in local 3R activities



Living Environment

- Strive to prevent air pollution
- Prevent the generation of noises, vibrations, foul odors, etc.
- Thoroughly implement asbestos countermeasures and the proper management of chemical substances
- Consider the impact of development projects, etc., on the surrounding environment
- Cooperate with local environmental beautification activities
- Obey the Minato City Smoking Rules



Natural Environment

- Prevent water pollution through appropriate wastewater disposal
- Cooperate on the conservation and utilization of waterfronts
- Promote the underground seepage and effective use of rainwater
- Conserve and create greenery
- Practice business activities that give consideration to biodiversity
- Create and protect habitats for living things



Environmental Conservation Activities

- Strive to improve knowledge and skills related to environmental awareness and environmental conservation
- Practice eco-friendly management

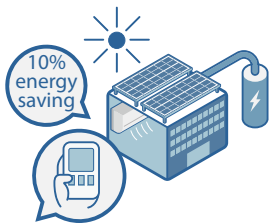


(3) Minato City Government



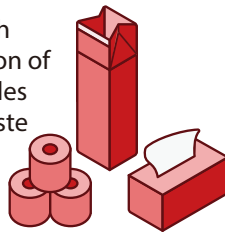
Global Environment

- Put routine effort into reducing CO₂ emissions and energy consumption
- Advance efforts to reduce environmental burdens



Sound Material-Cycle Society

- Reduce waste
- Aim to reduce the discharge of disposable plastics
- Ensure proactive reuse
- Actively use eco-friendly products
- Ensure thorough separation of recyclables from waste



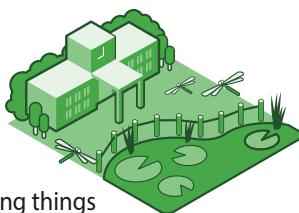
Living Environment

- Strive to prevent air pollution
- Prevent the generation of noises, vibrations, foul odors, etc.
- Thoroughly implement asbestos countermeasures and the proper management of chemical substances
- Consider the impact of municipal facility development on the surrounding environment
- Cooperate on local environmental beautification activities
- Obey the Minato City Smoking Rules



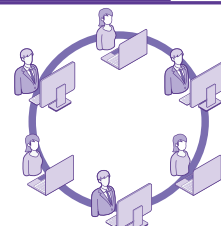
Natural Environment

- Prevent water pollution through appropriate wastewater disposal
- Promote the underground seepage and effective use of rainwater
- Conserve and create greenery
- Create and protect habitats for living things



Environmental Conservation Activities

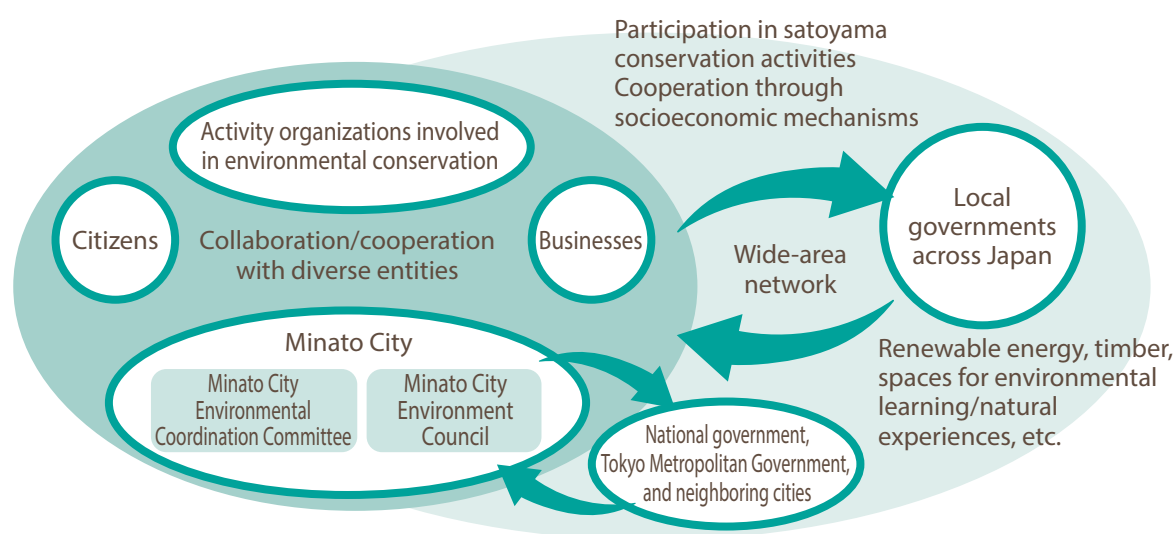
- Strive to improve environmental awareness among staff
- Practice eco-friendly city administration



5 Promotion of the Plan

In order to promote measures in an integrated and systematic manner based on this Plan, the relevant departments throughout Minato City will cooperate under the leadership of the Minato City Environmental Coordination Committee in a concerted effort to implement environmental measures. At the same time, Minato City will also collaborate and cooperate with diverse entities including citizens and businesses, and work together with Tokyo Metropolitan Government and neighboring cities to promote initiatives through a wide-area cooperative network comprising various local governments from across Japan.

Furthermore, in order to secure the effectiveness of this Plan, we will inspect and evaluate the measures every fiscal year via the Minato City Environment Council, and continue to improve on them through the implementation of two PDCA cycles incorporating reviews at key milestones over the duration of this Plan.



Minato City Environment Master Plan (Appendix)

Details including analysis of the current situation and issues, the project schedule for each initiative, and concrete examples of actions for the Environmental Action Guidelines related to the respective individual plans (*) included in the Minato City Environment Master Plan can be found in the Minato City Environment Master Plan (Appendix). Please refer to it alongside this document.

* Minato City Global Warming Countermeasure Area Promotion Plan, Minato City Environmental Initiative Implementation Plan, Minato City Climate Change Adaptation Plan, Minato City Biodiversity Regional Strategy, Minato City



The full text of the Minato City Environment Master Plan and Minato City Environment Master Plan (Appendix) are available on the Minato City website.

<https://www.city.minato.tokyo.jp>

