

# F Aoyama Course

## A course for experiencing the culture and arts of Aoyama

Time required **3.3 hours** Travel time **35 minutes** Total travel distance **2.9 km**

POINT!

On the way to the Aoyama cemetery, there is a very narrow sidewalk. Be careful when you pass the street.



### F1 Aoyama Cemetery

Japan's first public cemetery with beautiful cherry blossoms

It is a municipal cemetery opened in 1872, and the rich natural environment from the time of its establishment still remains. Some celebrities of modern Japanese history are also buried here, and you can walk around while studying the history. Many people visit the cemetery in the spring when many cherry blossoms are in full bloom.  
☎03-3401-3652

Duration  
40 minutes

### F2 Shotaro Akiyama Photo Art Museum

Photographer specializing in photos of flowers

It is a refurbished art museum, which was originally a former atelier of a photographer Shotaro Akiyama. The concept of the museum is 'peace of mind'. Exhibits include photographic works and collected paintings. Mr. Akiyama is also known as a 'flower' photographer and the museum also exhibits flower themed exhibitions.

Duration  
30 minutes

☎03-3405-8578  
11:00-16:30 (last entry 16:00)

Closed : every Monday and Tuesday

\*Closed due to the exhibition change and maintenance in the hall etc. Admission : General / JPY500 Student (Primary/Junior High) / JPY300 Presentation of Disability Certificate, disabled person and accompanying person (max 1 person) JPY300 each

\*For the purpose of organizing materials and preventing the spread of COVID-19, exhibitions in the museum have been suspended (as of February 2025). The museum will re-open as soon as the renovations and exhibits are ready.

### Route introduction

Start Tokyo Metro Chiyoda Line **Nogizaka Sta. Exit 2**

about 660m / about 11 minutes

F1 Aoyama Cemetery

about 640m / about 10 minutes

F2 Shotaro Akiyama Photo Art Museum

about 130m / about 2 minutes

F3 Nezu Museum

about 530m / about 9 minutes

F4 Omotesando Shopping District

about 160m / about 3 minutes

Goal Tokyo metro Chiyoda Line/ Hanzomon Line/ Ginza Line  
**Omote-sando Sta. Exit A1**

#### Course Feature

- We recommend that you be accompanied by a caregiver as there is a steep slope right after the start of the course.
- After that, it's a relatively flat route.

#### Topic



Omotesando's brand shops  
A line-up of famous branded boutiques from around the world.

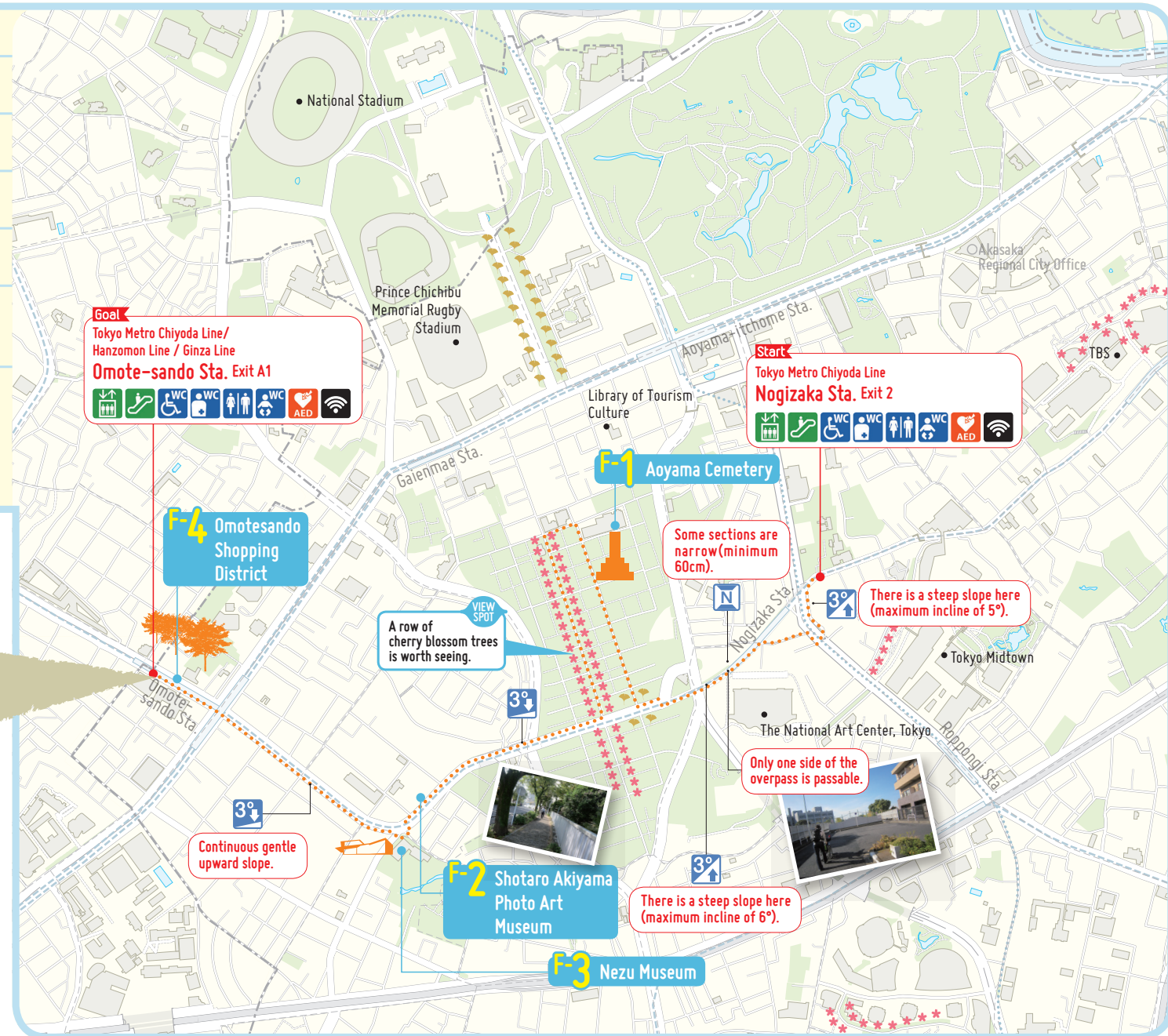
### F3 Nezu Museum

Duration  
60 minutes

Japanese and Eastern antiques and artworks

This museum houses over 7,600 of the antiques and pieces of art collected by businessman and avid tea ceremony practitioner, Kaichiro Nezu. The collection focuses on tea utensils, and includes many national treasures and important cultural properties. The elegant garden includes a natural stream, for a moment of tranquility amidst the city. A tea house is also located in the garden.

☎03-3400-2536 10:00-17:00 (last entry 16:30), online reservations also available. Closed: Mondays (or following day, in the event that Monday is a national holiday), New Year holidays season and when exhibits are being changed. Admission: general JPY1,300 (temporary exhibits)/ JPY1,500 (special exhibits); students JPY1,000 (temporary exhibits)/-JPY1,200 (special exhibits). JPY200 discount available for disabled visitors on presentation of disability certificate. Wheelchairs available for use (exhibit building only).



Goal Tokyo Metro Chiyoda Line/  
Hanzomon Line / Ginza Line  
**Omote-sando Sta. Exit A1**



F4 Omotesando Shopping District

Continuous gentle upward slope.

A row of cherry blossom trees is worth seeing.



There is a steep slope here (maximum incline of 6°).

F3 Nezu Museum



Only one side of the overpass is passable.



There is a steep slope here (maximum incline of 5°).

Start Tokyo Metro Chiyoda Line  
**Nogizaka Sta. Exit 2**



F1 Aoyama Cemetery

Some sections are narrow (minimum 60cm).



You can enjoy drinking original coffee and eating sweets at NEZUCAFE in the garden.

Break

### F4 Omotesando Shopping District

Duration  
30 minutes

Crowded with trendy people

Keyaki trees are the symbol of the district, and it was originally maintained as an approach to Meiji Shrine. Today, this busy approach to the shrine has been transformed into a fashionable spot that is crowded with many people every day.



POINT!  
There is a wheelchair accessible route in the park.  
\*Must be accompanied by a helper.



POINT!  
Part of the sidewalk has a slope. Also, sidewalks are crowded on holidays.

