

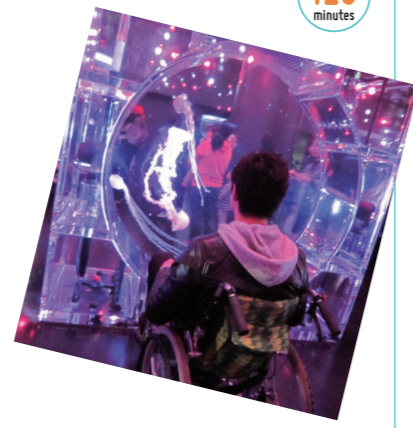
H Takanawa Course

A course that goes around key areas of Takanawa's history, and an aquarium

Time required **4.8** hours | Travel time **52** minutes | Total travel distance **3.0** km

#1 Maxell AQUA PARK SHINAGAWA

Entertainment that is more than just an aquarium



Duration **120** minutes

Cutting-edge entertainment in Tokyo that conveys the charm of living things through a variety of productions. From dolphin performances utilizing digital technologies to the jellyfish rumble, where jellyfish tanks are displayed against gorgeous audiovisual staging, visitors can see 20,000 living creatures of about 350 species while being in the center of Tokyo.

☎03-5421-1111(Audio guidance) ⚡ Differs by seasons, see website for details Admission: JPY2,800 (adults/high school age and older), JPY1,300(elementary and middle school students), JPY800 (preschool age, 4 years old and up). Disabled visitors and 1 accompanying attendant, up to two persons, half price on presentation of disability certificate.
*Discount available for high school students.



#2 TAKANAWA GATEWAY CITY

Directly connected to the station! Experience a cutting-edge lifestyle in this new town

On March 27, 2025, a new town was born on the expansive 10-hectare site surrounding JR Takanawa Gateway Station. This town, where commercial facilities, hotels, museums, and residences* are located, enables residents to experience a cutting-edge lifestyle where robots work alongside people. The grand opening is scheduled for spring 2026.
*The museum and residences will open at the grand opening.



For details, please check the official Takanawa Gateway City website.
<https://www.takanawagateway-city.com/information/>



Route introduction

- Start JR / Keikyu Line Shinagawa Sta. Takanawa Exit
- #1 Maxell AQUA PARK SHINAGAWA
about 260m | ⌚ about 5 minutes
 - #2 TAKANAWA GATEWAY CITY
about 890m | ⌚ about 15 minutes
 - #3 Takanawa Nihon'enoki Fire Station
about 560m | ⌚ about 9 minutes
 - #4 Site of the seppuku (ritualistic execution) of Oishi Yoshitaka and the other 16 Akougishi (Akou Roshi) samurai
about 650m | ⌚ about 11 minutes
 - #5 Sengaku-ji Temple
about 480m | ⌚ about 8 minutes
 - Goal Keikyu Line / Toei Asakusa Line Sengakuji Sta. Exit A2
about 210m | ⌚ about 4 minutes

Course Feature
There are many slopes throughout the course. In particular, Katsura-zaka, which leads to Takanawa Fire Station Nihonenoki Branch, has a steep slope, so we recommend that you be accompanied by a caregiver.

#3 Takanawa Nihon'enoki Fire Station

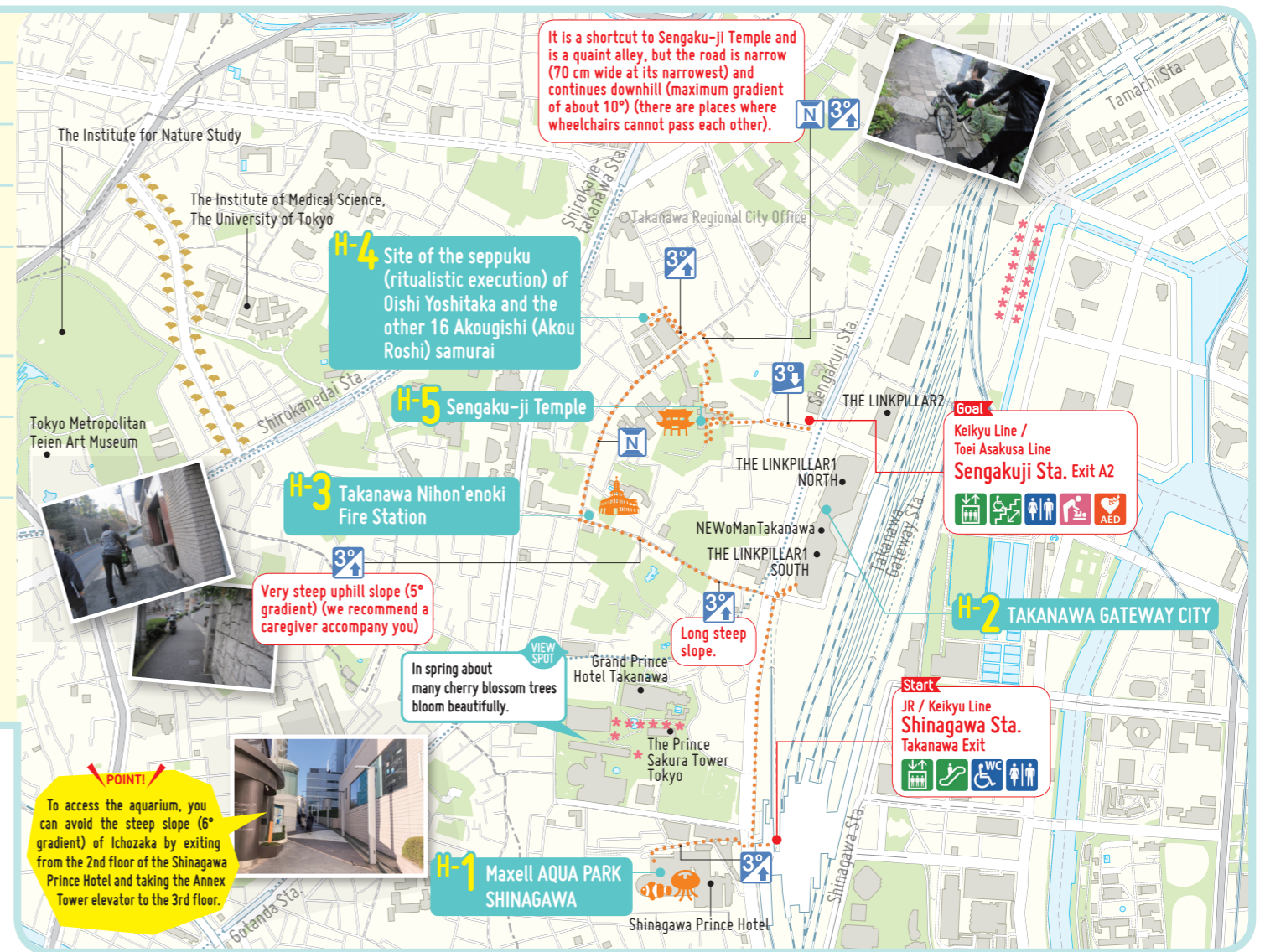
A retro exterior in the German Expressionist style



Built in 1933, this station was recognized by the Tokyo government as a designated historical building in 2010. The design is influence by German Expressionism, which was popular after WWI. The station is still in service, and features granite and wood doors. The interior is also open for tours.

☎03-3473-0119 ⚡ Visiting Hours: Weekdays 9:30-11:30, 13:30-16:30; Weekends and Holidays 13:30-16:30

*Please note that visits may be declined due to operational requirements, such as during disaster response operations. For groups of 10 or more, please contact the fire station before visiting and submit a Public Relations Cooperation Request Form.



#4 Site of the seppuku (ritualistic execution) of Oishi Yoshitaka and the other 16 Akougishi (Akou Roshi) samurai

A place where 17 Akougishi (Akou Roshi) committed Seppuku (ritual suicides)

On 4 February, 1703, Yoshitaka Oishi (Kuranosuke Oishi) and 16 Akougishi (Akou Roshi) committed seppuku (ritual suicides) at the Hosokawa House in Kumamoto Domain. Long ago, it was believed that the heart existed in the stomach, so "seppuku" was regarded as a way for demonstrating the honor of a Samurai.

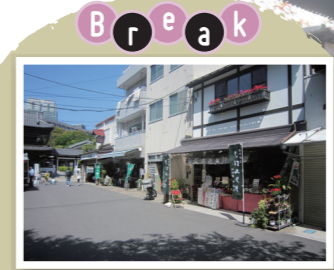


#5 Sengaku-ji Temple

Akohgishi (Akou Roshi) -47 Ronin who are known as vassals swearing loyalty to their lord.

The story is well known as 'Chushingura', dramatized in many TV programs and performed on theaters, and the stories of the brave men scattered across Japan during the Edo period resonate with many people.

☎03-3441-5560 ⚡ 7:00-16:00(All year round) Akohgishi Kinenkan 9:00-15:30 Admission: Adult JPY500 / Junior high and high school students JPY400 / children (over 10yrs) JPY250 *discount tickets for Disabled



There is a rest space in the grounds, and the souvenir shop along the path leading to the shrine is one of the enjoyable parts of the walk