

Consultation Services Offered by the Children and Families Support Center



For Expectant Mothers

After Your Baby is Born

Nursery Schools and Kindergartens

When You Want Temporary Care for Your Child

Community Childcare Support

One Year Child's Enrolled in School

Consultation Services & Support

Childcare SOS

General consultations regarding children, childcare, and the home

Minato City Children and Families Consultation Hotline ☎ 5962-7215

The center provides consultations regarding children under 18, childcare, domestic violence from a spouse or other family members, divorce problems, single parenting, or anything related to children, childcare, and the home.

Hours (Phone Consultations / Face-to-face Consultations / Home Visits)

Mon - Fri : 8:30 AM - 6:00 PM

Sat: 8:30 AM - 5:00 PM

(excludes national holidays, New Year's holiday)

Specialized Consultation Service

Phone Consultations / Face-to-face Consultations) ☎ 5962-7202

You can consult a public health nurse or psychologist about your child and childcare.

Specialized Consultation Service	Hours	Mon	Tues	Wed	Thurs	Fri	Sat
Consultation (Public Health Nurse)	9:00 AM - 1:00 PM		○		○		○
	2:00 PM - 5:00 PM		○		○		○
Consultation (Psychologist)	9:00 AM - 12:00 PM	○	○	○	○	○	○
	1:00 PM - 5:00 PM	○	○	○	○	○	○

(Excluding holidays and New Year's holidays)

Home Consultations

You can consult a counselor about a variety of problems that might arise at home. (Reservations required)

Hours	Tues	Fri
10:00 AM - 10:50 AM		○
11:00 AM - 11:50 AM		○
1:15 PM - 2:05 PM	○	○
2:15 PM - 3:05 PM	○	○
3:15 PM - 4:05 PM	○	○
4:15 PM - 5:05 PM	○	○

Legal Consultation Service for Divorce

Legal consultation with lawyers is available for divorce related matters including child support payments and parent-child visitation arrangements.

Be sure to call and make a reservation by 5:00 PM the previous day.

Day/Time: Third Wednesday of every month (Will either be rescheduled or cancelled if this falls on a public holiday)

- ① 1:00 PM - 1:45 PM
- ② 2:00 PM - 2:45 PM
- ③ 3:00 PM - 3:45 PM

Minato City Online Consultation Service

Consultation is available anytime via computer or smartphone, whether it's a child asking for help or an adult with questions about childcare.



<https://minato-kosodate.net/public/>

○ Eligibility: Children under 18 years old, their guardians, and pregnant women who live in Minato City

- Can get support without giving your name.
- May take 2 to 3 days to get a response. (Depending on the situation, it may take a longer time)

Child Consultation Center

Child Consultation Center ☎ 5962-6500



In the Child Consultation Center, experts such as children's social workers, children's psychologists, public health nurses, doctors, and lawyers work together to provide support with regard to the various issues faced by children and their families, and offer consultations.

Types of Consultation

■ ■ Consultations Concerning Children Requiring Protective Care

Childcare Difficulties

Consultation service for parents/guardians facing difficulties providing childcare due to illness, death, divorce, etc.

- Physical abuse Hitting, kicking, or locking the child outside, among other actions
- Neglect (Child Neglect) Not providing the child with the appropriate clothing, food, living environment, etc., or when a child is not taken to a hospital even in cases of serious illness, etc.
- Psychological abuse Threatening or emotionally harming the child, or having marital arguments in front of the child, among other behaviors.
- Sexual abuse Engaging in indecent acts against a child or exposing them to sexual acts.

■ ■ Consultations Regarding Children with Disabilities

Consultations regarding language development, orthopedic impairment, delay in speech development, developmental disabilities, etc.

Consultations regarding cognitive disabilities, Intellectual Disability Certificates (Ai no Techo)

■ ■ Consultations Regarding Childcare

Consultations regarding childcare/discipline, play, etc., when it comes to infants; concerns about childcare

Consultations Regarding Truancy/Bullying

Consultations regarding your child's personality/behaviors (doesn't do well with others, shy/introverted, too hyper, violence in the household, etc.)

■ ■ Consultations for Delinquency

Consultations Regarding Potential Criminal Behavior

Consultations regarding children under 18 years old who are engaging in problematic behaviors (running away, stealing money from family, etc.)

Consultations Regarding Juvenile Delinquents

Consultations regarding children under 14 years old who have engaged in criminal acts (Vandalism, violent behavior, theft, etc.)

■ ■ Consultations Regarding Child Health

Consultations regarding health management (infants, premature babies, sickly children, child illness, accident/injury, etc.)

■ ■ Consultations Regarding Foster Care

Consultations regarding foster care for those who wish to become foster parents, those who wish to put their child in foster care, etc.; consultations regarding adoption (including plenary adoption)

Consultations Regarding Adoption

■ ■ Other Consultations

Consultations for other family and child-related matters

Face-to-face Consultations: Mon - Fri: 8:30 AM - 6:00 PM

Phone Consultations: Child Consultation Center ☎ 5962-6500 (Mon - Fri: 8:30 AM - 6:00 PM)

Minato City Child Abuse Consultation Hotline ☎ 0120-483-710 (24/7, 365 days a year)

Consultations Offered by Child Psychiatrists (Emotional Health Consultation Service)



Public Healthcare Subsection, Health Promotion Section, Minato Public Health Center ☎ 6400-0084

Child psychiatrists provide consultations about any concerns you may have regarding your child's mental/emotional issues, behaviors, etc. (the child must be 18 years old or younger). This includes the following.

< Concerns About Mental/Emotional State > ● Tends to throw tantrums ● Obsessively neat

< Concerns About Behavior > ● Reluctant to go to school ● Tendency to harm themselves

< Concerns About Development > ● Has difficulties communicating ● Delay in language development

< Concerns About Physical Symptoms that May Result from Emotional Issues > ● Headaches, stomachaches, etc., before going to school ● Inability to wake up for class

How to Use

Feel free to call the Minato Public Health Center as a first step.

Face-to-face Consultations:

See the Koho Minato or the Minato City website for a detailed schedule.

Maternal and Child Mental Health Counseling



Public Healthcare Subsection, Health Promotion Section, Minato Public Health Center ☎ 6400-0084

Women sometimes become emotionally unstable when pregnant, after childbirth, or when caring for children. They may feel uneasy about child-rearing or have other emotional issues.

Specialized doctors provide counseling for the emotional issues of mothers.

Each interview is conducted by a doctor and lasts for 30 minutes.

A public health nurse will also be present for the interview.

※Childcare is available in a separate room.

Please request childcare when making an appointment for consultation.

※We will maintain confidentiality.

When: Twice a month (reservation required)

Eligibility: Mothers providing childcare/expectant mothers who reside in Minato City, and their families

See the Koho Minato or the Minato City Website for a detailed schedule.

Consultation Office at Gender Equality Center (Libra) Emotional Support Room



Gender Equality Center (Libra) 1-16-1 Shibaura (Minato Park Shibaura)

Dedicated phone line for the Emotional Support Room ☎ 3456-5771 (during counseling hours)

At the Gender Equality Center (Libra), you can consult with specialized counselors and lawyers about your family or children's education, about violence from your spouse or partner, about your own way of living, about criminal damages, about anything related to SOGIE, and about a variety of worries for which we can provide support.

Your privacy will be strictly protected.

■ **Hours** ※Excluding New Year's holiday and special holidays.

General Consultations: Phone / Interview (reservation required for interview)

Daytime: Mon - Sat: 10:00 AM - 4:00 PM / Calls/interviews accepted until 3:00 PM

Evening: Tue & Fri: 6:00 PM - 9:00 PM / Calls/interviews accepted until 8:00 PM

Legal Consultations: Interview (reservation required / generally twice a month)

Marriage / Household Problems Specialized Counseling: Face-to-Face (Reservation required, generally once a month)

Minato LGBTQ Consultation: Phone / Face-to-Face (Reservations required for face-to-face consultations, generally once a month)

Group Mother's Time

Public Healthcare Subsection, Health Promotion Section, Minato Public Health Center ☎ 6400-0084



For Expectant Mothers
After Your Baby Is Born

Nursery Schools and Kindergartens

When You Want Temporary Care for Your Child

Community Childcare Support

One Year Child's Enrolled in School

Consultation Services & Support

Childcare SOS

A group for mothers to discuss their daily stresses such as child-rearing, household worries, and relationships among parents, and to provide comfort to each other.

- ※ Childcare is available in a separate room. Please request childcare when making a reservation.
- ※ We will maintain confidentiality.

When: Once a month (reservation required)

Eligibility: Mothers providing childcare who reside in Minato City

For a detailed schedule, please see the Minato City website.

Minato Development Support Center for Children (Pao)

Minato Development Support Center for Children (Pao) ☎ 6277-3106

☎ 6277-3844 Hours: Mon - Sat: 9:00 AM - 6:00 PM



Provides developmental consultations and support for children who have experienced stumbles/delays in their development. Do you have any concerns about your child's development? For example...

- Slow speech
- Slow to start walking
- Won't settle down
- Children showing signs of developmental clumsiness or motor coordination difficulties
- Often has issues with friends

Be sure to call us if any of these apply

A psychologist, physical therapist, occupational therapist, speech therapist, certified social worker, etc., will answer your inquiries as necessary during the interview.

Child Development Support

Name		Content, eligibility, etc.
Consultation Services	Comprehensive Consultation Service	We provide consultations regarding your child's growth and development, as well as support through parent-child classes, as well as individual support for children (0-2 years old). instruction. Days: Mon - Sat: 9:00 AM - 6:00 PM
	Planning Consultation and Support Service / Consultation and Support Service for Children with Disabilities	Provides consultations concerning social welfare services and future use of outpatient support for children with disabilities, etc. Will also help you come up with a usage plan with regard to the various support services available for children with disabilities.
Outpatient Support for Children with Disabilities ※	Child Development Support (at facilities)	Children learn basic everyday skills through day-to-day activities and experience various things filtered through play. By interacting with friends in small groups, they can learn how to adapt to group situations. (Simultaneous nursery school use also possible) Days: Classes 5 days a week: Mon - Fri Classes 2 days a week: Tuesday and Wednesday or Thursday and Friday Eligibility: Children 3-5 years of age
	Child Development Support (group support)	Children build up accomplishments through day-to-day activities so that they can be more confident in what they can do in kindergarten, nursery school, etc. Days: Afternoons on Mon - Fri (2-3 times a month) Eligibility: Children 3-5 years of age attending kindergarten, nursery school, etc.
	Child Development Support (individual instruction)	Individual guidance from psychologists, physical therapists, occupational therapists, and/or speech therapists, depending on the child's individual circumstances. Days: Mon - Fri Eligibility: In general, children 3-5 years of age
	Day Service (after school, etc.)	Psychologists, occupational therapists, and speech therapists provides individual support and small-group education based on professional perspectives tailored to the child's specific needs as part of developmental support. The aim is to help children develop their life skills, social skills, communication skills, and more. Days: Afternoons on Mon - Fri; Saturdays (1-2 times a month) Eligibility: Children who are attending school

Outpatient Support for Children with Disabilities	Home Visit-Based Child Development Support	Children receive home visits where they learn basic everyday skills through their day-to-day lives and improve their variety of play by experiencing actions needed in daily life through play. Eligibility: Children with severe disabilities, etc., which make it difficult for them to go out and receive child development support, etc.
	Nursery School Visit-Based Support	Children are visited at their nursery schools, kindergartens, schools, etc., and receive professional support, etc., to help them adapt to group situations. Days: Mon - Fri (about twice a month) Eligibility: Children 0-18 years of age who attend facilities with group activities (nursery schools, etc.)

※ Children will need to have their Day Service Certificate in order to receive outpatient support for children with disabilities.

Minato City Lifestyle/Employment Support Center

 Minato City Lifestyle/ Employment Support Center

 2F Azabu Regional City Office, 5-16-45 Roppongi, Minato-ku  5114-8826



This is a consultation facility that provides support to residents of Minato City who face financial difficulties with regard to their everyday lives, work, household finances, etc.

Details of Support: ※ Services marked with an asterisk (※) are also open to those receiving public welfare assistance.

● Consultations/Support for Self-Reliance

Helps identify financial/day-to-day concerns, working with the individual in question to solve their issues according to a set support plan.

● Employment Support

Career support counselors provide help with job-hunting efforts.

● Employment Preparation Support ※

Provides support to those for whom immediate employment would be difficult, improving their lifestyle, social/life skills, etc., to help put them in a position where they can find employment.

● Household Finances Support ※

Provides assistance/instruction regarding the management of household finances, resolving debt, non-payment, etc.

● Education Consultation Support ※

Provides consultations/support regarding the child's education, future educational path, etc.

● Single-Parent Household Support ※

Counselors work with single parents to solve the issues they are facing, supporting their job-hunting efforts with special consideration for the circumstances of a single-parent household.

● Housing Allowance

We provide an allowance to secure residences for those that have lost their homes due to unemployment or those that are at risk of doing so.

Hours:

Mon - Fri: 8:30 AM - 5:15 PM (Closed: Weekends, national holidays, New Year's holiday)

Other Consultation Services

The following is a list of the main consultation services provided by Minato City and public institutions in relation to childcare. Contact each facility for further details.

◆ Consultation Services Provided by Minato City

Contents	Institution	Contact Information	Hours
Bullying, truancy, problems at school or with friends, etc.	Minato City Educational Research and Training Center	Face-to-face Consultations: ☎ 5422-1545	Mon - Fri: 9:00 AM - 5:00 PM (Unavailable on national holidays, New Year's holiday)
		Face-to-face Consultations: ☎ 5422-1546	Mon - Fri: 9:00 AM - 7:00 PM Sat: 9:00 AM - 5:00 PM (Unavailable on national holidays, New Year's holiday)
General consultations regarding children's growth and development	Minato Development Support Center for Children (Pao)	☎ 6277-3106	Mon - Sat: 9:00 AM - 6:00 PM (Unavailable on national holidays, New Year's holiday)
Consultations and information provided regarding city policies, day-to-day life, etc.	Consultations for Foreign Nationals (Global Community Planning Subsection, Community Promotion Section)	☎ 8578-2524 3578-2046	Mon - Fri: 9:00 AM - 12:00 PM 1:00 PM - 5:00 PM (Unavailable on national holidays, New Year's holiday)
Consultation for children and parents who are not native Japanese speakers	Multicultural Kids Coordinator (Global Community Planning Subsection, Community Promotion Section)	Same as above	Same as above
Childcare Telephone Consultation Services by Public Nursery Schools and Licensed Children's Gardens (dedicated phone lines for childcare consultations) Nursery school staff can offer guidance on worries regarding childcare. Don't keep your problems to yourself. Please feel free to call at any time.	Shiba Nursery School	☎ 8455-5039	Mon - Fri: 9:00 AM - 5:00 PM
	Shimmei Nursery School	☎ 5733-6822	
	Shibakoen Nursery School	☎ 8438-0595	
	Minami-azabu Nursery School	☎ 8442-5907	
	Hommura Nursery School	☎ 8444-5087	
	Nishi-azabu Nursery School	☎ 8407-5031	
	Azabu Nursery School	☎ 8583-0648	
	Iigura Nursery School	☎ 8583-5805	
	Higashi-azabu Nursery School	☎ 8584-3811	
	Moto-azabu Nursery School	☎ 5422-7338	
	Akasaka Nursery School	☎ 8583-5107	
	Minami-aoyama Nursery School	☎ 8401-5047	
	Aoyama Nursery School	☎ 8401-5041	
	Isaragozaka Nursery School	☎ 8444-5404	
	Takanawa Nursery School	☎ 8449-5047	
	Shirokane Nursery School	☎ 8441-5022	
	Shinno Nursery School	☎ 5422-6363	
	Shibaura Nursery School	☎ 5232-1130	
Konan Nursery School	☎ 8450-5004		
Takahama Nursery School	☎ 5781-0255		
Daiba Nursery School	☎ 5500-5097		
Shibaura Island Children's Garden	☎ 5443-7337		

For Expectant Mothers

After Your Baby Is Born

Nursery Schools and Kindergartens

When You Want Temporary Care for Your Child

Community Childcare Support

Once Your Child Is Enrolled in School

Consultation Services & Support

Childcare SOS

◆ Consultations provided by public institutions other than those of Minato City

Contents	Institution	Contact Information	Hours
Bullying, other emergency, etc.	24-Hour Child SOS Hotline	Phone Consultations:  0120-0-78310 (Na-ya-mi-i-o-u)	24/7, 365 days a year
Bullying, corporal punishment, etc. Consultations on human rights violations, etc.	Children's Human Rights Emergency Hotline (Ministry of Justice)	Phone Consultations:  0120-007-110 Email Consultations: LINE Consultations: 	Mon - Fri: 8:30 AM - 5:15 PM
Consultations regarding children's human rights (bullying, truancy, corporal punishment, child abuse, etc.)	Children's Human Rights Emergency Hotline (Tokyo Bar Association)	Phone Consultations / Face-to-Face Consultations [Reservations Required]:  8503-0110	Mon - Fri: 1:30 PM - 4:30 PM 5:00 PM - 8:00 PM (Calls accepted until 7:45 PM) Sat: 1:00 PM - 4:00 PM (Calls accepted until 3:45 PM)
Delinquency, criminal damage, and bullying issues	Metropolitan Police Department Omori Youth Center	Phone Consultations / Face-to-Face Consultations [Reservations Required]:  8763-0012	Mon - Fri: 8:30 AM - 5:15 PM (Unavailable on national holidays, New Year's holiday)
Consultations from family members or school staff for those under 20 years of age	Young Telephone Corner (Youth Counseling Room, Metropolitan Police Department)	Phone Consultations:  3580-4970	24/7, 365 days a year
Consultations regarding bullying for infants to high-school-aged children	Tokyo Metropolitan HOT-LINE Telephone Services Regarding Bullying (Tokyo Metropolitan Education Consultation Center)	Phone Consultations:  0120-53-8288	24/7, 365 days a year
Consultations for children struggling with their mental state, going through tough times, etc.	Kokoro-no-Denwa Counseling Room (Night) (Tokyo Metropolitan Government)	Phone Consultations:  5155-5028	Every day: 5:00 PM - 10:00 PM (Calls accepted until 9:30 PM)
Consultations regarding issues with your child's behavior, emotional development, etc.	Kokoro-no-Denwa Counseling Room (Tokyo Metropolitan Children's Medical Center)	Phone Consultations:  042-312-8119	Mon - Wed: 9:30 AM - 11:30 AM 1:00 PM - 4:30 PM (Unavailable on national holidays, New Year's holiday)
Consultations regarding everyday issues, concerns, etc.	Consultations for foreign nationals (Minato International Association)	Phone Consultations / Face-to-face Consultations [Reservations Required]:  6440-0233	Mon - Fri: 9:00 AM - 12:00 PM 1:00 PM - 5:00 PM (Unavailable on national holidays, New Year's holiday)
Consultations on health concerns characteristic during puberty (including sexual concerns)	Tokyo Youth Health Support (Waka-Sapo) (Tokyo)	Phone Consultations:  0120-372-463 Email Consultations: 	Wednesday 3:00 PM ~ 8:00 PM Sunday 9:00 AM ~ 2:00 PM (Closed on New Year's Day)
Childcare / Parent-Child	Consultation LINE for Parents and Children	LINE Consultations: 	Mon - Fri: 9:00 AM - 11:00 PM (Contact accepted until 10:30 PM) Saturday, Sunday, holidays, and New Year's holidays 9 : 00 ~ 17 : 00
Counseling when it feels like it's hard to live	Relief Consultation LINE @Tokyo (Tokyo Metropolitan Government)	LINE Consultations: 	Every day 3:00 PM ~ 11:00 PM (Contact accepted until 10:30 PM)
Counseling regarding friends, study, family, money, etc.	Children's SNS Legal Consultations (Daini Tokyo Bar Association)	LINE Consultations: 	Monday, Thursday, Sunday 19 : 00 ~ 21 : 00

If You Suspect Child Abuse

📞 Minato City Child Abuse Consultation Hotline ☎️ 0120-483-710
📞 Child Consultation Center ☎️ 5962-6500



🗄️ What Is Child Abuse?

Child abuse refers to acts by a parent/guardian or childcare provider that cause harm to the child's mental and/or physical state.

Child abuse impairs the healthy growth and development of the child and can have deep, long-lasting consequences far into the future. It is a violation of the child's human right to be raised in a safe and healthy environment.

What to Check For

Differences Between Discipline and Abuse

Acts that have a damaging effect on the child's development are considered abuse, even if the parent's intention is to discipline the child.

Whether or not something is abuse has nothing to do with the parent's circumstances; it is important that it be decided from the child's perspective.

🗄️ What Are the Different Types of Child Abuse?

1 Physical Abuse

Punching, kicking, shoving/throwing the child; making them eat/drink foreign substances/objects; throwing hot water on them; suspicious fractures; locking them out of the house; etc.

2 Psychological Abuse

Damaging the child's mental/emotional state with abusive comments or remarks; showing favoritism among siblings; exposing them to domestic violence or marital conflict; causing fear or anxiety; ignoring them or showing a rejecting attitude; etc.

3 Sexual Abuse

Forcing the child to engage in sexual "pranks" and/or sexual acts; showing them genitals, the act of sex, etc.; showing them pornographic videos; using them as the subject of child pornography photos; etc.

4 Neglect

Not providing the child with the appropriate clothing, food, living environment, etc.; not taking them to a hospital when they get ill or injured; leaving them alone in cars, in the home, etc.; locking them in the house; preventing them from going to school against their wishes; letting another member of the household engage in child abuse; etc.

🗄️ Why Does Child Abuse Occur?

Child abuse may arise due to a combination of various factors.



National Child Consultation Center Hotline 189

Parent-Child Consultation LINE

If You Suspect Domestic Violence

Q Family Counseling Subsection, Children and Families Support Center
Minato City Children and Families Consultation Hotline ☎ 5962-7215



■ ■ What is Domestic Violence (DV)?

Domestic violence refers to violence by a former or current spouse, partner, lover, or other intimate partner.

Domestic violence is immensely damaging to the victim's mental/physical state and their day-to-day lives, and is a clear violation of their human rights.

In addition, growing up in households with domestic violence impairs the healthy growth and development of children and can have deep, long-lasting consequences far into the future. As such, it also violates the child's human right to be raised in a safe and healthy environment.

■ ■ What Are the Different Types of Domestic Violence?

Domestic violence can occur in a variety of ways, and can be broadly divided into the following four categories.

In many cases, these acts occur in conjunction with one another in a repeated and/or continuous manner, so that the aggressor can control the victim through violence.

① Physical Violence / Destruction of Property

Violence that damages the physical body, including punching the victim, kicking them, dragging them by the hair, etc. Destroying objects, punching the wall, destroying property, etc.

② Psychological Violence

Verbal violence, such as shouting loudly, threatening, repeatedly denying someone's personhood, or using humiliating phrases such as "This is why you're no good."

③ Sexual Violence

Forcing the victim to engage in sex against their wishes, not cooperating with regard to birth control measures, forcing them to have an abortion, forcing them to look at/watch pornography, engaging in excessively rough sex, etc.

④ Financial/Societal Violence

Withholding day-to-day living costs, excessive surveillance/questioning with regard to spending, surveillance/restrictions of the victim's behavior, not wanting to see the victim's family, friends, etc.

■ ■ If You Are Subjected to Violence, or Feel Your Life is in Danger

Immediately make your way to the nearest koban (police box) or police station and ask for help.

Subsidy for Use of Rehabilitation Programs for Domestic Violence Offenders

Q Family Counseling Subsection, Children and Families Support Center ☎ 5962-7214



We will support part of the expenses incurred if using an NGO "Perpetrators of Domestic Violence Rehabilitation Program" in order to improve relationships between perpetrators of domestic violence and their victims (spouses).

Be sure to contact us before registering with the program.

Eligibility:

Domestic violence offenders and their spouses registered as residents in Minato City
(Includes those who are in a de facto marriage without official registration)

Social Care Facilities and Systems

Child Consultation Center ☎ 5962-6500

Infant Home

This facility cares for children who are under 2 years old and are in situations like those listed below.

- Children whose parents/guardians are unable to care for them for reasons such as childbirth, illness/injury, or other emergencies
- Children whose parents cannot provide care due to suffering from long-term illness or physical/ emotional disability.
- Children who are not able to receive care from their parents due to reasons such as the death of both parents, abandonment by their parents, or having no guardian

Children's Orphanage

This facility provides care for children aged 2 to under 18 years old who are in situations like those listed below.

- Children who are currently unable to receive care from their parents/guardians for reasons such as the death of their parents, being abandoned by their parents, or their parents suffering from long-term physical/emotional disability.
- Children for whom living at home is deemed unsuitable due to reasons such as abuse.
- Other children whose living environment necessitates care.

Foster Parents and Family Homes

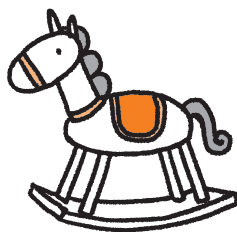
This is a system in which children who cannot live with their families for various reasons are taken in and raised in another household. Includes "Foster Families," in which a family takes in and cares for a child for a certain period of time without intent to adopt, and "Adoptive Foster Parents," which is intended for those who plan to adopt the child.

Facility to Support Self-Reliance of Children

For children who require guidance or mentoring due to their actual or potential misconduct, as a result of their family situation or other environmental reasons. This child welfare facility supports the healthy physical and emotional growth and self-reliance of children through guidance on daily life, learning, work, etc.

Self-Reliance Support Home (Child Self-Reliant Living Support Program)

This is a facility that provides consultation, daily life support, life guidance, and employment assistance to children and others who have completed compulsory education and are aiming to become self-reliant.



Support for Single-Parent Households



Q Child Benefits Subsection, Children and Youth Support Section ☎ 8578-2432

The City provides a variety of support services for the children and parents/guardians (childcare providers) of single-parent households or their equivalent in Minato City.

If you fulfill the following requirements and have not yet applied, contact the Health and Welfare Subsection, Residents Support Section of your local Regional City Office.

The amount provided, income limits, etc., differ depending on the type of subsidy/allowance.

Please contact us for further details.

Details:

Medical Expenses Subsidy for Single-Parent Households, etc.

Partial subsidy for medical costs

Child Allowance for the Disabled

An allowance for childcare (13,500 yen a month per child).

Child-rearing Allowance

If there is only one child, the allowance, depending on income, is 46,690 - 11,010 yen.

Eligibility:

Single-parent households (single mother/father) that are raising and caring for a child who meets the following requirements, or households that are raising such a child in place of the parents.

Requirements:


You must fulfill one of the following.

- (1) Parents have dissolved their marriage
- (2) A parent has passed away
- (3) The father or mother has a severe disability
- (4) A parent is missing or otherwise unaccounted for
- (5) A parent has neglected their childcare responsibilities for a year or longer
- (6) A parent has had a protective order filed against them due to domestic violence
- (7) A parent has been detained for legal reasons for a year or longer
- (8) The child was born out of wedlock

Income Limits:

Each subsidy/allowance has set income limits for the parent and for those providing supportive childcare.

Benefits for Those Receiving Child-rearing Allowances, etc.

 Health and Welfare Subsection, Residents Support Section, Regional City Office



For Expectant Mothers

After Your Baby is Born

Nursery Schools and Kindergartens

When You Want Temporary Care for Your Child

Community Childcare Support

One Year Child's Enrolled in School

Consultation Services & Support

Childcare SOS

Those receiving a child-rearing allowance may use the following services.

Application is required.

Contact the Health and Welfare Subsection, Residents Support Section at your local Regional City Office.

※ Make sure to inform the staff that you are receiving a child-rearing allowance.

Minato City Community Bus Pass

Up to one person per household can use the Minato City Community Bus Pass for free.

[What You Need to Apply] • Certificate of Proof of Child-rearing Allowance

Tokyo Metropolitan Transportation Pass

Up to one person per household can use the Tokyo Metropolitan Transportation Pass for free.

[What You Need to Apply] • Certificate of Proof of Child-rearing Allowance

Discount for JR Commuter Pass

Allows you to purchase a JR commuter pass at a 30% discount. When doing so, you will need the Certificate of Proof provided by the City.

What You Need to Apply: • Certificate of Proof of Child-rearing Allowance

• ID photo of the person who will be using the pass, seal (if you use one)

(4 cm x 3 cm / Must have been taken within the past six months)

Partial Exemption from Tokyo Metropolitan Government Water Rates

Exempts you from paying the basic fee. You must apply at the local branch office of the Bureau of Waterworks. When doing so, you will need an application form provided by the City.

What You Need to Apply: • Certificate of Proof of Child-rearing Allowance

Exemption from Large-sized Waste Collection Fee

Contact the Center for Large-sized Waste directly. The center will then mail you the Fee Exemption Form at a later date.

Contact Information: Center for Large-sized Waste  6747-9253

There are two ways in which you can apply to receive the garbage sticker

① Send a copy of your Certificate of Proof of Child-rearing Allowance and the completed Fee Exemption Form to the Minato Recycling and Waste Management Office.

Address: Minato Recycling and Waste Management Office, 3-9-59 Konan, Minato-ku 〒 108-0075  3450-8025

② If you are in a hurry, bring your letter of notification and the completed Fee Exemption Form to your local Regional City Office or the Minato Recycling and Waste Management Office, and apply directly.

What You Need to Apply: • Certificate of Proof of Child-rearing Allowance

• Letter of notification from the Center for Large-sized Waste

• Completed Fee Exemption Form

Employment Support for Single-Parent Households

Family Counseling Subsection, Children and Families Support Center 5962-7214

We have systems to promote financial independence in single-parent households.

Minato City Program to Support Higher-level Vocational Training for Single-Parent Households

In cases in which single fathers or mothers caring for children under 20 years of age are studying in a training school in order to obtain certain qualifications, this program issues an allowance to encourage vocational training and reduce the burden of daily expenses.

There are eligibility requirements, so consultation is required prior to enrolling in courses at training schools.

Please contact us for more information.

Education and Training Benefits to Support the Independence of Single-Parent Households in Minato City

When a single father or mother caring for a child under 20 years of age finishes taking a specified course, a portion of the class fees is provided.

There are eligibility requirements, so consultation prior to starting a course is required.

Please contact us for more information.

Minato City Benefits Program to Support High School Graduation Exam Passing in Single-Parent Households

When a single father or mother caring for a child under 20 years of age, or a child being cared for by a single father or mother finishes taking a specified course aimed at passing the high school equivalency exam, a portion of the class fees is provided.

There are eligibility requirements, so consultation prior to starting a course is required.

Please contact us for more information.

The Minato City Lifestyle/ Employment Support Center also supports employment in single-parent households.

Home Helper Service for Single-Parent Households

Family Counseling Subsection, Children and Families Support Center 5962-7214



This service is for single mothers or fathers who have a registered address in Minato City, who are currently caring for children of elementary school age or younger, and who, due to work, illness, or other circumstances, are experiencing difficulties in their day-to-day lives and require assistance with housework or childcare. A home helper will visit the home to provide support with housework, childcare, etc.

The number of dispatch hours per month (maximum) varies depending on the child's age. There is a cost burden based on income.

Prior consultation and application are required.

Please contact us for more details.

Tokyo Metropolitan Welfare Loan for Single-Mother and Single-Father Households

Family Counseling Subsection, Children and Families Support Center 5962-7214

The city offers a loan for single-mother and single-father households who have resided in Tokyo for 6 months or longer, and who are providing childcare for a child under 20 years old, etc.

The loan is intended for educational costs required for the child's continued education/school enrollment (class fees, facility fees, commute fees, textbook fees, etc.), education support costs (enrollment fees, uniform fees, etc.), and more, and is provided interest-free.

You must undergo an evaluation in order to be approved for the loan.

Be sure to contact us in advance.

Funds will be issued around one month after consultation.

Pre- and Post-Divorce Parent Support Services

Family Counseling Subsection, Children and Families Support Center 5962-7214



We offer support for Minato City residents and children under 18 years of age (the Visitation Coordination Program is only available for junior high school students and under) who are about to go through or are going through a divorce, in order to reduce the emotional burden placed on children due to their parents' divorce, and help stabilize their day-to-day lives. Please contact us for more details.

■ Subsidy for Use of Alternative Dispute Resolution (ADR)

A subsidy (maximum of 50,000 yen) is available for the fees incurred during application and on the first arbitration date when using an Alternative Dispute Resolution (ADR) service operated by an ADR business that has been certified by the Tokyo Bar Association or the Minister of Justice, regarding child support payments after divorce, visitation rights, etc.

■ Subsidy for Use of Child Support Payment Guarantee

A subsidy (maximum of 50,000 yen) for the use of a service that ensures child support payments (contract of guarantee), provided by a private child support payment guarantee company. The subsidy covers the first guarantee payment.

■ Parent-Child Visitation Coordination Program

A program that provides support by coordinating child visitations after their parents' divorce/separation, so that the child can continue to be involved in both of their parents' lives, and feel loved by them.

Training for Child-rearing Supporters



Child-rearing Square "Ai-port" ☎ 5786-3250

Minato City holds training for "Minato City Child-rearing Supporters" who are active in our City. We welcome participation from people who want to utilize their rich life experience in child-rearing and work.

- Eligibility** This is for persons who are interested in work to support child-rearing and children in the community, and, as a general rule, who wish to be involved in child-rearing/children's programs in Minato City, or who are already involved in such programs.
- No. of Available Positions** 120 supporters per year (tentative)
- Costs** Free (trainees pay for textbooks and learning materials)

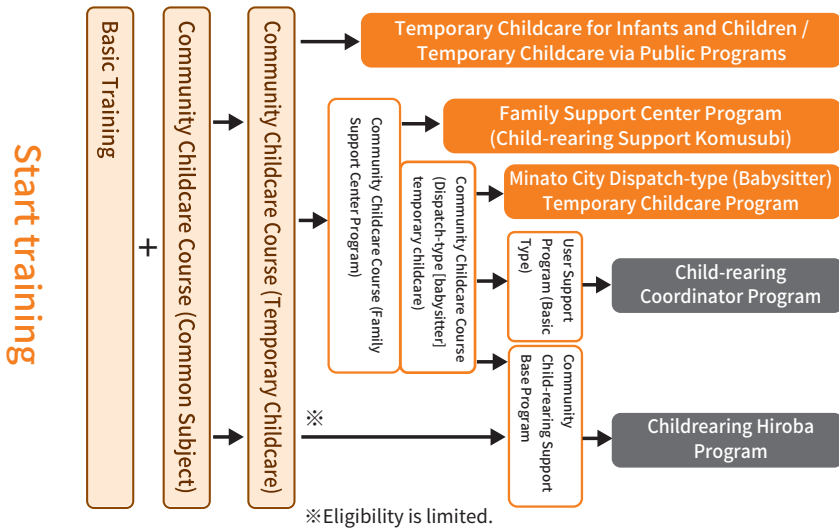
※ This training is held for the purpose of certifying trainees as "Child-rearing Supporters." No introductions to or guarantees for employment are provided after the training.

Details of Training for Child-rearing Supporters

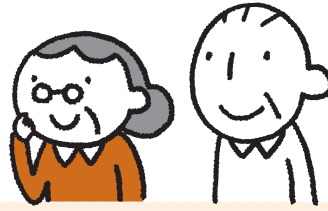
People taking the training program for the first time must enroll in "Basic Training" and the "Community Childcare Course."

Next, trainees will proceed with specialized courses depending on their desired type of activities.

Persons who complete the specialized training program will be issued a completion certificate as a Child-rearing Supporter, which is a nationally recognized certification.



What kind of programs are out there?



Community Childcare Course

You will be eligible to work at facilities that provide temporary childcare for infants and young children once you have completed the Community Childcare Course.

Once registered, you will also be able to work as a childcare provider, offering temporary childcare for Minato City services/programs.

If you complete the specialized training for the Family Support Center program, you may also register/work as a cooperating member of the Child-rearing Support Komusubi program.

If you complete the specialized training program for the Minato City Dispatch-type (Babysitter) Temporary Childcare Program, you will be able to work as a supporter for the Program for Dispatch-type (Babysitter) Temporary Childcare. Note that since the specialized training program for the Minato City Dispatch-type (Babysitter) Temporary Childcare Program also includes specialized training for the Family Support Center program, you may work for both programs once you complete the training, if you wish to do so.

Community Child-rearing Support Course

The Community Child-rearing Support Course has two specialized training programs - the Community Child-rearing Support Base Program, and the User Support Program (Basic Type).

Once you have completed the specialized training of the Community Child-rearing Support Base Program, you will be able to work as a staff member at Childrearing Hiroba such as Toddler's Play Room Appy, Ai-port, the Minato Child-rearing Supporting Center "Pokke," and more.

Once you have completed the User Support Program (Basic Type), you will be able to provide consultation and support to users as a coordinator for the Child-rearing Coordinator Program.

Jukensei Challenge Loan Program (Loan for Students Studying for Entrance Exams)

Family Counseling Subsection, Children and Families Support Center ☎ 5962-7214



We offer interest-free loans to households under a specified income limit to assist with high school/university entrance examination costs and cram school fees for 3rd-year junior high school and 3rd-year high school students, or those that correspond to this level.

Recipients will be exempted from having to pay back the loan if the child enrolls in the high school or university in question.

Contact us for more details, including application requirements, conditions of the loan, application deadlines, and necessary documents.

Student Loan and Scholarship Programs (University, etc.)

Educational General Affairs Subsection, Office of the Superintendent of Education, Education Promotion Department, Secretariat of the Board of Education ☎ 3578-2713



The City offers scholarship loans and grants to individuals who have a high motivation for learning, but who are having difficulties continuing their education for financial reasons, following an applicant screening/evaluation process.

Contact us for more details, including the application schedule, etc.

Application Requirements: Applicants must fulfill all of the following requirements.

- The person supporting the applicant financially must have continuously resided in Minato City for six months at the time of the scholarship being provided.
- The applicant must be facing difficulties continuing their education for financial reasons.
- The applicant must fulfill one of the following.
 - (a) The applicant must be expected to graduate from a high school/vocational high school, vocational school (upper secondary education), other school (upper secondary education), etc., or have graduated from one of these within the past two years, and be enrolling in a university, etc., for the first time.
 - (b) The applicant must be a student, etc., enrolled in university, etc.
- The applicant must have exceptional grades. (Only for grants)

Income Requirements: There are income requirements for grant-type benefits. Please contact us for more information.

※The income requirement for loan-type assistance has been eliminated.

Minato City Home Care Consultation Center

Q Minato City Home Care Consultation Center ☎ 6435-0758 📠 5476-0208



Minato City residents can receive consultations regarding general home care, including medical care, medical treatment, and nursing care.

[Hours] Monday to Friday 9:00 AM ~ 5:00 PM (excluding holidays and New Year's holidays)

Medical Consultation Services

Q Minato City Medical Consultation Counter ☎ 6453-7137

You can receive medical phone consultations such as the following.

- You would like to know where you can go for medical consultations
- You would like to know how to take basic care of wounds and illnesses
- You would like to know about local medical institutions

[Hours] Monday to Friday 9:00 AM ~ 4:30 PM (excluding holidays)

For consultations regarding hospitals with more than 20 beds, please see the “Tokyo Patient Voices Consultation Counter.”

☎ 5320-4435

Please consult the “General Welfare Counter.”

Q Health and Welfare Subsection, Residents Support Section, Regional City Office (see back cover)
Social Welfare Subsection, Residents Support Section, Regional City Office (see back cover)



The General Welfare Counter in each Regional City Office's Residents Support Section can provide counselling regarding welfare, as well as support by coordinating with welfare professionals such as public health nurses and welfare organizations, etc.

You can book a consultation date in advance on the Minato City official website.

[Hours] Monday to Friday 8:30 AM ~ 5:00 PM (excluding holidays and New Year's holidays)



◀ Look for this mark

General Welfare Center
Appointment Booking
System

