



Once Your Child is Enrolled in School

Preparing to Enroll in Elementary School

Q Educational Affairs Subsection, School Affairs Section, School Education Department, Secretariat of the Board of Education ☎ 3578-2726 ~ 2729

Q Education and Subsection for Children with Difficulties, Educational Personnel Planning Section, School Education Department, Secretariat of the Board of Education (Education Center) ☎ 5422-1543

In mid-October, the Board of Education will send related forms such as the "Form for Selection of Elementary School" and "Health Examination Form for Enrollment in Elementary School" will be sent to applicable parents who possess an address in Minato City. Contact us if you have not received these documents by the end of October, or if you have lost them.

(1) Health Examinations at Time of Elementary School Enrollment

Health examinations are held at elementary schools on a set date in late October and early November. (The schedule varies depending on the school. Please refer to the Enrollment Health Examination Notice.)

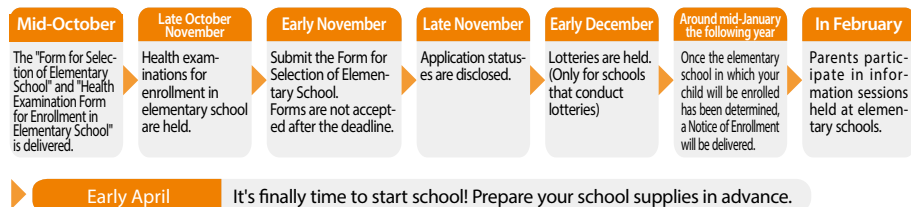
(2) Submission of Form for Selection of Elementary School

Enter the name of the elementary school in which you want to enroll your child and submit the form by the deadline.

As a general rule, Minato City requires that you enroll in the school corresponding to the school district for your living address. However, the School Selection System for selecting schools in adjacent school districts is available to interested families. In conjunction with implementation of the School Selection System, we create and distribute pamphlets which introduce information such as educational policies for each elementary school. These pamphlets are available from the Board of Education and from each school, as well as at libraries, the Educational Research and Training Center, and the Regional City Office. Schools are also open to prospective students and their families. Please tour each school and base your selection on a careful consideration of school characteristics and educational content.

*Due to circumstances such as population increase in the school district, and depending on the academic year, it may not be possible for some schools to accept students from other school districts.

Pre-Enrollment Schedule



■ If Enrolling in a National or Private Elementary School

If your child has been accepted to a national or private elementary school, please submit the Enrollment Certificate (Acceptance Certificate) issued by the school to the School Affairs Section of the Board of Education as soon as possible.

■ Enrollment of Children with Foreign Nationality

If your child possesses foreign citizenship and you wish to enroll them in a public elementary school, please complete the procedures at the School Affairs Section. Please bring the "Guidance on New Enrollment at Public Elementary Schools," which was set to you in October, and documentation which lists the child's and parents'/guardians' address, name, date of birth, and nationality (for example, alien registration card, passport, etc.).

■ If You Have Any Concerns Regarding Enrollment in Elementary School

If you have any concerns regarding your child's behavior or development, or if your child has a disability, etc. and you want information on appropriate schools and support, please contact the Special Education Subsection.

A school admissions counselor will conduct interviews with parents/guardians and provide assistance in determining the appropriate support/environment for each child.

List of Public Elementary Schools

| School Name | Address | TEL |
|-----------------------------------------------------------------|-----------------------|-----------|
| Onarimon Elementary School | 3-2-4 Shibakoen | 3431-2766 |
| Shiba Elementary School | 2-21-3 Shiba | 3456-3072 |
| Akabane Elementary School | 1-4-52 Mita | 3451-1988 |
| Shibaura Elementary School | 4-8-18 Shibaura | 3451-4992 |
| Mita Elementary School | 4-11-38 Mita | 3451-3997 |
| Takanawadai Elementary School | 2-8-24 Takanawa | 5447-0616 |
| Shirokane Elementary School | 1-4-26 Shirokanedai | 3441-5407 |
| Shirokane-no-oka Gakuen (Shirokane-no-oka Elementary School) *1 | 4-1-12 Shirokane | 3441-5363 |
| Konan Elementary School | 4-3-28 Konan | 3474-1501 |
| Azabu Elementary School | 1-5-15 Azabudai | 3583-0014 |
| Nanzan Elementary School | 3-8-15 Moto-azabu | 3403-5773 |
| Hommura Elementary School | 3-9-33 Minami-azabu | 3473-1462 |
| Kogai Elementary School | 3-11-16 Nishi-azabu | 3404-1530 |
| Higashimachi Elementary School | 1-8-11 Minami-azabu | 3451-7726 |
| Akasaka Elementary School | 8-13-29 Akasaka | 3404-8602 |
| Aoyama Elementary School | 2-21-2 Minami-aoyama | 3403-5588 |
| Seinan Elementary School | 4-21-15 Minami-aoyama | 3404-8608 |
| Odaiba Gakuen Koyo Elementary School *2 | 1-1-5 Daiba | 5500-2572 |

*1: Shirokane-no-oka Gakuen is an integrated elementary and junior high school in Minato City that consists of Shirokane-no-oka Elementary School and Shirokane-no-oka Junior High School.

*2: Odaiba Gakuen Koyo Elementary School and Odaiba Gakuen Koyo Junior High School form Minato City Odaiba Gakuen Integrated Elementary and Junior High School.

Special Education Classes and Part-Time Instruction Classes

Education and Subsection for Children with Difficulties, Educational Personnel Planning Section, School Education Department, Secretariat of the Board of Education (Education Center) ☎ 5422-1543

Minato City provides a variety of opportunities for appropriate education based on the development and disabilities of each child. For example, classes are available for children with cognitive disabilities (special education classes) as well as children with language disorders/hearing impairments (part-time instruction classes).

● What are Special Education Classes/Part-Time Instruction Classes?

Special Education Classes: Classes in which the child is enrolled and attends every day for learning.

Part-Time Instruction Classes: Classes that the child attends only on prescribed days and times in order to receive special education according to their individual disabilities and needs. The child normally attends the school in which they are enrolled.



● Elementary School (Special Education Classes)

| School Name | Type of Disability | Class Name |
|-------------------------------|------------------------|-----------------|
| Aoyama Elementary School | Cognitive disabilities | Asunaro Class |
| Akabane Elementary School | Cognitive disabilities | Himawari Class |
| Hommura Elementary School | Cognitive disabilities | Waka-Take Class |
| Konan Elementary School | Cognitive disabilities | Wakaba Class |
| Takanawadai Elementary School | Cognitive disabilities | Ajisai Class |

● Elementary School (Part-Time Instruction Classes)

| School Name | Type of Disability | Class Name |
|----------------------------|---------------------|---------------------------|
| Onarimon Elementary School | Hearing impairments | Kikoe-no-Kyoshitsu Class |
| | Language disorders | Kotoba-no-Kyoshitsu Class |

Subsidy for Elementary School Enrollment

 School Administration Support Subsection, School Affairs Section, School Education Department, Secretariat of the Board of Education  3578-2731

The City provides subsidies for school supplies, lunch fees, school trip fees, etc. based on family circumstances for children/students and parents/guardians who face difficulties with school enrollment due to their financial circumstances, so that they may feel secure in the child's education.

To be eligible, you must reside in Minato City, be a parent/guardian of a child/student enrolled in a national/public elementary or junior high school, and fulfill one of the following:

- (1) **Receiving public welfare assistance**
- (2) **Receiving a child-rearing allowance**
- (3) **Income from the previous year is below the set threshold.**

Please contact us for details.

Pupils' Clubs

 Facility Management Subsection, General Administration Section, Regional City Office (see back cover)
 Children and Youth Education Subsection, Child and Family Section  3578-2426

A pupils' club is for children whose parents are not available to care for them after school due to their work schedules or other circumstances. Children must register in order to participate. Contact each Pupils' Club for more information if you wish to enroll.

Eligibility:

Pupils' Clubs at Children's Halls, etc.:

Children who reside in Minato City and/or are enrolled in a Minato City elementary school (first year to sixth year)

Hoka GO Pupils' Club:

Children who are enrolled in an elementary school (first year to sixth year) with the Hoka GO Pupils' Club in question and/or reside in the school district for the Hoka GO Pupils' Club in question

Hours: Weekdays: Afterschool - 7:00 PM / Saturdays: 8:00 AM - 5:00 PM

Non-school days: 8:00 AM - 7:00 PM (unavailable on Sundays, national holidays, and New Year's holiday [December 29 - January 3])

Fee: Childcare Fee: 3,000 yen per month/per child

Snack/Activities Fee: 2,000 yen per month/per child (used to pay for snacks and activities)

| Area | Facility Name | Address | TEL |
|----------|-----------------------------------------------------|-------------------------------------------------------------------|-----------|
| Shiba | Shimmei Kids-to-Teens Hall Pupils' Club | 1-6-7 Hamamatsucho | 5733-5199 |
| | Hoka GO Pupils' Club Onarimon | 3-2-4 Shibakoen (in Onarimon Elementary School) | 3431-2767 |
| | Hoka GO Pupils' Club Shiba | 2-21-3 Shiba (in Shiba Elementary School) | 3456-5082 |
| | Hoka GO Pupils' Club Akabane | 1-4-52 Mita (in Akabane Elementary School) | 5443-0331 |
| | Shimbashi Pupils' Club | 5F-8F Shimbashi Sakuragawa Building, 6-12-4 Shimbashi | 6721-5762 |
| Azabu | Iigura Pupils' Club | 1-21-2 Higashi-azabu | 3583-6355 |
| | Azabu Kids-to-Teens Hall Pupils' Club | 4-6-7 Minami-azabu | 5447-0611 |
| | Hoka GO Pupils' Club Azabu | 1-5-15 Azabudai (in Azabu Elementary School) | 3583-5883 |
| | Hoka GO Pupils' Club Nanzan | 3-8-15 Moto-azabu (in Nanzan Elementary School) | 3470-9699 |
| | Hoka GO Pupils' Club Hommura | 3-9-33 Minami-azabu (in Hommura Elementary School) | 3473-4781 |
| | Hoka GO Pupils' Club Kogai | 3-11-16 Nishi-azabu (in Kogai Elementary School) | 3404-3301 |
| | Hoka GO Pupils' Club Higashimachi | 1-8-11 Minami-azabu (in Higashimachi Elementary School) | 3451-7728 |
| | Higashi-azabu Pupils' Club | 2-1-1 Higashi-azabu (in Higashi-azabu 2-chome Composite Facility) | 3568-1042 |
| | Minami-azabu Pupils' Club | 4F OJ Building, 2-11-10 Minami-azabu | 6809-5291 |
| Akasaka | Akasaka Kids-to-Teens Hall Pupils' Club | 6-6-14 Akasaka | 5561-7830 |
| | Akasaka Kids-to-Teens Hall Aoyama Hall Pupils' Club | 3-4-1-201 Kita-aoyama | 5786-6567 |
| | Hoka GO Pupils' Club Akasaka | 8-13-29 Akasaka (in Akasaka Elementary School) | 3404-6931 |
| | Hoka GO Pupils' Club Aoyama | 2-21-2 Minami-aoyama (in Aoyama Elementary School) | 5474-2760 |
| | Hoka GO Pupils' Club Seinan | 4-19-7 Minami-aoyama (adjoining Aoyama Lifelong Learning Hall) | 3404-8610 |
| Takanawa | Toyooka Children's Hall Pupils' Club | 5-7-7 Mita | 3453-1592 |
| | Takanawa Children's Hall Pupils' Club | 3-18-15 Takanawa | 3449-1642 |
| | Shirokanedai Children's Hall Pupils' Club | 4-8-5 Shirokanedai | 3444-1899 |
| | Takanawa Kids-to-Teens Hall Pupils' Club | 1-4-35 Takanawa | 3443-1555 |

| | | | |
|----------------|-----------------------------------------------------------------|-----------------------------------------------------------|-----------|
| Takanawa | Hoka GO Pupils' Club Shirokane | 1-4-26 Shirokanedai (in Shirokane Elementary School) | 3440-4321 |
| | Hoka GO Pupils' Club Shirokane-no-oka | 4-1-12 Shirokane (in Shirokane-no-oka Elementary School) | 3441-8395 |
| | Hoka GO Pupils' Club Takanawadai | 2-8-24 Takanawa (in Takanawadai Elementary School) | 5449-6911 |
| | Katsurazaka Pupils' Club | Takanawa Katsurazaka Building, 2-12-24 Takanawa | 6455-7973 |
| | Sanko Pupils' Club | 3-18-2 Shirokane (Former Sanko Elementary School) | 3441-5273 |
| Shibaura Konan | Yukashi-no-Mori Pupils' Club (Shirokanedai Pupils' Club) | 6F Yukashi-no-Mori, 4-6-2 Shirokanedai | 6450-4014 |
| | Daiba Children's Hall Pupils' Club | 1-5-1 Daiba | 5500-2363 |
| | Konan Kids-to-Teens Hall Pupils' Club | 4-3-7 Konan | 3450-9576 |
| | Shibaura Island Children and Senior Citizens Plaza Pupils' Club | 4-20-1 Shibaura | 5443-7338 |
| | Hoka GO Pupils' Club Shibaura | 4-8-18 Shibaura (in Shibaura Elementary School) | 5476-6877 |
| | Hoka GO Pupils' Club Konan | 4-3-28 Konan (on the premises of Konan Elementary School) | 6718-4230 |
| | Shibaura Pupils' Club | Shibaura Nakajima Building, 4-12-28 Shibaura | 5439-5680 |
| | Goshikibashi Pupils' Club | 2F Goshikibashi Building, 3-5-13 Kaigan | 6435-2745 |

Hoka GO Hoka GO Club

 Facility Management Subsection, General Administration Section, Regional City Office (see back cover)
 Children and Youth Education Subsection, Child and Family Section  3578-2426

Hoka GO and Hoka GO Clubs are programs conducted at public elementary schools to provide places where children can safely engage in after-school activities. Children spend their afterschool time having fun, playing with friends from other years, studying, playing sports, and more, all under the watchful eyes of professional instructors and locals. Registration is required for participation. For details, contact the relevant Hoka GO and Hoka GO Club.

Eligibility:

Children who are enrolled in the elementary school in question and/or 1st-6th year elementary school students who live in the school district in question (no maximum capacity. However, the Hoka GO Club Konan is limited to 1st-years.)

Hours:

Afterschool - 5:00 PM / Non-school days: 9:00 AM - 5:00 PM (unavailable on weekends, national holidays, and New Year's holiday [December 29 - January 3])

Fee:

Free (no snacks provided) / Depending on the activity, fees may be required to pay for materials, etc.

Hoka GO

| Facility Name | TEL |
|----------------------------------------------------------|-----------|
| Hoka GO Mita (in Mita Elementary School) | 3451-6768 |
| Hoka GO Odaiba (in Odaiba Gakuen Koyo Elementary School) | 5500-2562 |

Hoka GO Club

| | |
|-----------------------------------------------------------------------------------------------|-----------|
| Hoka GO Club Onarimon (in Onarimon Elementary School) | 3431-2767 |
| Hoka GO Club Shiba (in Shiba Elementary School) | 3456-5082 |
| Hoka GO Club Akabane (in Akabane Elementary School) | 5443-0331 |
| Hoka GO Club Shibaura (in Shibaura Elementary School) | 5476-6877 |
| Hoka GO Club Takanawadai (in Takanawadai Elementary School) | 5449-6911 |
| Hoka GO Club Shirokane (in Shirokane Elementary School) | 3440-4321 |
| Hoka GO Club Shirokane-no-oka (in Shirokane-no-oka Gakuen Shirokane-no-oka Elementary School) | 3441-8395 |
| Hoka GO Club Konan (on the premises of Konan Elementary School) | 6718-4230 |
| Hoka GO Club Azabu (in Azabu Elementary School) | 3583-5883 |
| Hoka GO Club Nanzan (in Nanzan Elementary School) | 3470-9699 |

| | |
|---------------------------------------------------------------|-----------|
| Hoka GO Club Hommura (in Hommura Elementary School) | 3473-4781 |
| Hoka GO Club Kogai (in Kogai Elementary School) | 3404-3301 |
| Hoka GO Club Higashimachi (in Higashimachi Elementary School) | 3451-7728 |
| Hoka GO Club Akasaka (in Akasaka Elementary School) | 3404-6931 |
| Hoka GO Club Aoyama (in Aoyama Elementary School) | 5474-2760 |
| Hoka GO Club Seinan (adjoining Aoyama Lifelong Learning Hall) | 3404-8610 |

Special Guidance Classroom (Tsubasa Classroom)

Special Guidance Classroom (Tsubasa Classroom) 📍 3-6-9 Toranomono, Minato-ku

☎ 5422-1548 🌐 <https://tsubasa.minato-ky.ed.jp/>

👤 Supervisor for Educational Guidance, Educational Personnel Planning Section, School Education Department, Secretariat of the Board of Education, Minato City ☎ 5422-1541

The Special Guidance Classroom (Tsubasa Classroom) provides appropriate counseling, guidance, and assistance to elementary and junior high school students/children who have not attended school for a long period of time due to emotional causes, etc., based on their circumstances. The classroom supports reintegration into school life.

In Tsubasa Classroom, staff (experienced teachers, psychology-related staff, etc.) support the learning activities of children/students and prepare enjoyable hands-on activities such as sports and out-of-school learning. The classroom also exchanges information with the registered school regarding the daily activities of the child/student, and maintains close communication in order to provide support for reintegration into school life.

For further information, contact the classroom as listed below.

Preparing to Enroll in Junior High School

Q Educational Affairs Subsection, School Affairs Section, School Education Department, Secretariat of the Board of Education ☎ 3578-2726 ~ 2729

The preparations for enrolling in junior high school are the same as for elementary school. The School Selection System that has been put into place allows you to select a school in your school district, as well as all other schools.

In addition, there is no health examination required at the time of enrollment.

List of Public Junior High Schools

| School Name | Address | TEL |
|-------------------------------------------------------------------|-------------------------|-----------|
| Onarimon Junior High School | 3-25-30 Nishi-shimbashi | 3436-3568 |
| Mita Junior High School | 4-13-13 Mita | 5441-7348 |
| Takamatsu Junior High School | 1-16-25 Takanawa | 3441-6239 |
| Konan Junior High School | 4-3-3 Konan | 3471-0238 |
| Shirokane-no-oka Gakuen Shirokane-no-oka Junior High School *1 | 4-1-12 Shirokane | 3441-5361 |
| Roppongi Junior High School | 6-8-16 Roppongi | 3404-8855 |
| Koryo Junior High School | 4-14-8 Nishi-azabu | 3409-7687 |
| Akasaka Junior High School | 1-18-12 Minami-aoyama | 3402-9306 |
| Aoyama Junior High School | 1-1-9 Kita-aoyama | 3404-7522 |
| Odaiba Gakuen Koyo Junior High School *2 | 1-1-5 Daiba | 5500-2575 |

*1: Shirokane-no-oka Gakuen is an integrated elementary and junior high school in Minato City that consists of Shirokane-no-oka Elementary School and Shirokane-no-oka Junior High School.

*2: Odaiba Gakuen Koyo Elementary School and Odaiba Gakuen Koyo Junior High School form Minato City Odaiba Gakuen Integrated Elementary and Junior High School.

Special Education Classes and Part-Time Instruction Classes

Q Special Education Subsection, Educational Personnel Planning Section, School Education Department, Secretariat of the Board of Education ☎ 5422-1543

Junior High Schools (Special Education Classes)

| School Name | Type of Disability | Class Name |
|-----------------------------|------------------------------|-------------|
| Roppongi Junior High School | Cognitive disabilities | Class No. 3 |
| Aoyama Junior High School | Cognitive disabilities | Class No. 3 |
| Konan Junior High School | Cognitive disabilities | E Class |
| Akasaka Junior High School | Autism / Emotional disorders | C Class |

Junior High Schools (Part-Time Instruction Classes)

| School Name | Type of Disability | Class Name |
|-----------------------------|---------------------|------------|
| Onarimon Junior High School | Hearing impairments | Aoi Class |

Municipal Efforts to Keep Children Safe

There is no end to crimes that target vulnerable children. Minato City engages in a variety of efforts to keep children safe.

Keep the Community Safe Email Service

Knowledge is power
when it comes to safety!



A suspicious individual
was seen talking to a
child at XXXX3chome.

Register for the service in advance, and the city will send you information about crimes that have occurred in Minato City, suspicious activity (suspicious individuals talking to children, etc.), crime/fire prevention, etc., through your email address. Register for the service through the “Just in Case” page of the Minato City official website.

Minato City Keep the Community Safe Email Service

Search



Living Safety Promotion Subsection, Disaster Prevention Section, Minato City
3578-2270

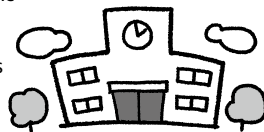
You can also register through this QR code

The Child and Family Section, Board of Education, etc., are taking measures to keep your child safe

- Emergency email notifications for disasters at children's facilities
- Emergency email notifications for parents/guardians of public elementary/junior high school students
- Lending crime-prevention buzzers to children/students
- Staffing public elementary schools with regular security guards
- Fence repairs at kindergartens

See the Minato City official website for details

<http://www.city.minato.tokyo.jp/>



Minato Children's Counseling Network

Children and Families Support Center
Children and Families Consultation Hotline ☎ 5962-7215

When children enter adolescence, they may avoid conversation with their parents or resent interference by their parents. This leads to changes in communication between parents and children. Although some parents may feel worried and confused by the attitude displayed by children who are growing apart from their parents, adolescence is an important stage in which children move towards adulthood while encountering and solving a variety of problems.

Adolescence is essential for children to become independent from their parents and to establish a unique identity that is different from their parents and other people.

Minato Children's Counseling Network accepts a variety of consultation requests from children with concerns and worries. As counseling can be provided via cell phone, smartphone or computer, please feel free to use this service for advice when you need it.

Consultation requests are accepted 24-hours a day. Responses are sent within 2-3 days.

Minato Children's Counseling Network

<https://minato.kodomosoudan.net/>



Convenient access!
You can enter from here too!

Anyone who lives in Minato City and is under 18 years of age can receive counseling for their worries via mobile phone, smartphone, or computer.

Are you keeping your worries to yourself? Would you like to talk with someone?



I hate being harshly scolded by my parents!

My friend said something awful to me!

People write horrible things about me on Line and the internet!

