

MINATO MONTHLY

Published by Minato City

Published monthly by: Minato City Tokyo Tel: 03-3578-2111 Edited by: Public Relations Subsection, Office of the Mayor, Minato City Hall, 1-5-25, Shibakoen, Minato-ku, Tokyo 105-8511
Tel: 03-3578-2992, Monday through Friday, 9 a.m. to 5 p.m. Fax: 03-3578-2034 E-mail: kuminkoho@city.minato.tokyo.jp Web: www.city.minato.tokyo.jp Circulation: 10,000 copies

No 364 June 2017



Installing furniture tipping prevention aid

A Guide to Furniture-tipping Prevention Aid

Supporting disaster prevention measures in the home

Minato City provides furniture-tipping prevention aids for registered residents in Minato City in order to minimize harm to residents at the time of an earthquake. According to surveys conducted by the Tokyo Fire Department, 30-50% of injuries sustained during earthquakes in recent years were caused by falling or tipping furniture. As a disaster prevention measure, Minato City offers assistance in the form of aid and in fixing furniture in place.

Furniture-tipping prevention aid

Aid details

Provide support bars to hold furniture in place in the event of a disaster and window film to prevent flying glass.

*For more details, please see the pamphlet which is available at Regional City Offices. An English brochure is available.

Eligibility

Households that reside in Minato City and are registered as residents

*Aid can be received by a household once.

Assistance for installing furniture-tipping prevention appliances

Minato City assists in the installation of furniture-tipping prevention appliances for households considered to have difficulties installing them themselves based on the following criteria:

- 1) Single-person households of a person aged 65 or older or households with only senior citizens
- 2) Households with people certified as beneficiaries of the Long-term Care Insurance system at level 3 or higher
- 3) Households with people who have Certificate of the Physically Disabled; *Ai-no-Techo*, Certificate of the Intellectually Disabled; or Certificate of the Mentally Disabled

- 4) Households with people who are receiving a medical expense subsidy for an intractable disease
- 5) Households with expectant mothers who have been issued with the Maternal and Child Health Handbook, or with mothers who gave birth within the past year and submit their applications for this subsidy by the last day of the 11th month after the delivery month
- 6) Single-parent households headed either by a mother or father

How to apply:

Fill in the "Application form for aid in installing furniture-tipping prevention appliances," or "Application form for installing prevent the tipping of furniture appliances," and submit it to the Collaboration Project Subsection at each Regional City Office. Other documents may be requested for an expectant mother and single parent.

Supervising Section: Collaboration Project Section of each Regional City Office

Disaster Prevention Map Is Updated

This Disaster Prevention Map is available in English, Chinese, Korean, and Japanese. You can pick it up at any Regional City Office.

This Disaster Prevention Map contains information about the location of evacuation shelters in each area, local meeting places where safety confirmation for local residents is carried out, and the location of wide area evacuation shelters to escape from the dangers of spreading fires. The reverse side of the map provides various information for disaster response, such as the key actions to take after an earthquake, and the method of using the disaster emergency message dial.

Inquiries: Minato Call, Tel: 03-5472-3710

Minato Monthly is delivered with The Japan Times/International New York Times on the first of each month. It is also available at municipal facilities, post offices and subway stations (Akabanebashi, Akasaka, Akasaka-mitsuke, Aoyama-itcho, Azabu-juban, Daimon, Gaien-mae, Hiroo, Kamiyacho, Mita, Nogizaka, Omotesando, Roppongi, Shimbashi, Shiodome, Shirokanedai and Shirokane-Takanawa) in Minato City. The articles appearing in the **Minato Monthly** are also found on the Minato City Web: www.city.minato.tokyo.jp

Minato Monthly home-delivery service: For free delivery of Minato Monthly to foreign resident's homes in Minato City, contact Minato Call or Minato Monthly by e-mail at kuminkoho@city.minato.tokyo.jp. Please write "Minato Monthly" in the subject line.

Minato Call
CITY INFORMATION SERVICE
03-5472-3710
E-mail: info@minato.call-center.jp

RESIDENT SERVICES

Multilingual Information for Foreign Residents

For new residents

A Welcome Package: Containing a variety of information is provided to foreign residents who have newly moved into Minato City at the registration counter of each Regional City Office. Some of the leaflets and guidebooks contained in the Welcome Package are also available at the Multilingual Information Corner located in the Minato City Hall.

For children and education

Minato Kids: Various programs and services for eligible residents available at the Children and Families Support Center and the Child and Family Section from pregnancy until their child is 18 years of age.

Minato Public Elementary and Junior High School Guidebook:

Introduction to municipal elementary and junior high schools browsing at the School Affairs Section and the Minato City Web.

List of Japanese Language Classes: Classes offered by volunteers in Minato City available at the Multilingual Information Corner of the City Hall.

Disaster preparation

Evacuation maps, leaflets and booklets are available at each Regional City Office and the Disaster Prevention Section of Minato City Hall.

Topics: Preparing for major earthquakes, Tips for preventing furniture from tipping, Disaster prevention map, Minato Handbook for Everyone's Safety and Peace

For daily living

Guide to Minato Living: Information guidebook for residents

Minato City Map

Useful Information for Everyday Living in Minato City: Handy leaflets sorted by category: 1) Learning how to live in/become a resident of Minato City, 2) Emergency and Disaster Preparation Information, 3) Taxes, Insurance and Pensions, 4) Child Rearing and Education, 5) Welfare, 6) Daily Life, 7) Status of Residence, Work and Tourism, 8) Medical Care and Hospitals, 9) Various Consultation Contacts and Information

Sorting Recyclables and Waste: Guidebook for sorting and recycling of waste

Bike-Sharing: A system in which multiple bicycle ports or stations are set up within a designated area and users can return the bike at any ports or stations

Bus route maps and timetables: Minato City community buses and Toei buses.

Disaster Preparedness Workshop

Do you worry about natural disasters? Let's learn about disaster preparedness through various activities. English speaking staff will be available. No sign up needed. Children are welcome.

Date & time: July 1, 10:30 a.m. to 2:30 p.m.

Place: Shimmei Iki-iki Plaza, 1-6-7 Hamamatsucho

Inquiries: Global Community Planning Subsection, Tel: 03-3578-2046

RESIDENT SERVICES

Minato Information Mail

Minato City sends important administrative information to non-Japanese residents in Japanese with *furigana* reading aid in English, Chinese and Korean via e-mail. The mail includes information regarding city events and affiliated organizations, tourist locations, disaster prevention, parenting, health, welfare, and lifestyle. The mail will be sent on the 10th and the 25th of each month.

Residents' cooperation in answering quick surveys will also be conducted via this e-mail service twice every year. The surveys will ask non-Japanese residents regarding their everyday lives in Japan and possible expectations towards Minato City. The survey is aimed to serve not only as a tool to disseminate administration information, but also as a communication channel between the city and non-Japanese residents. To register for Minato Information Mail (MIM), please access the URL below.

<https://service.sugumail.com/minato-information/html/en.htm>

Inquiries: Global Community Planning Subsection, Tel: 03-3578-2046

ANNOUNCEMENT

2017 National Health Insurance Premium Statements and Payment Slips

National Health Insurance (NHI) premium statements and payment slips for the 2017 fiscal year will be sent to heads of households on June 14.

Reduction of insurance premiums

For households whose total annual income earned between January and December of the previous year is below designated levels, monthly payments for their NHI premiums can be reduced by a commensurate amount, specifically 20, 50, or 70%. Whether a household qualifies for a reduction will be determined by total household income. Therefore, residents are required to declare the income of all household members, even in cases when there is no income.

Reduction measure for involuntarily unemployed residents

People who have lost their jobs due to corporate restructuring or other reasons are eligible for reduced NHI premiums.

Eligibility:

- 1) People who have left their jobs due to business reasons on the part of their employers, such as bankruptcy or labor reduction.
 - 2) People who have left their jobs due to reasons stipulated under the Employment Insurance Act, for example the expiration of their employment contract.
- Applicants should bring their certificate of qualification for employment insurance to Minato City Hall to apply.

For more details about reduction measure, please visit the Minato City Web.

Mailing of payment slips

Minato City Hall sends out a total of 10 payment slips, from June 2017 through March 2018. There are two types of payment slips: one divided in ten separate installments and one for a full payment. Recipients are free to choose the type of payment according to their preference.

Note: Those making payments through automatic withdrawal from a bank, Japan Post bank accounts or by special collection will receive only the premium statement.

Premiums can be paid at banks, credit unions, post offices convenience stores, Minato City Hall, or each Regional City Office. Please note that payments cannot be made at convenience stores or via mobile payment if the amount shown on a single premium payment slip exceeds ¥300,000.

Minato City will review health insurance premiums when residents join or withdraw from the NHI or when there are other alterations to the amount of resident tax due.

Supervising Section: Eligibility Subsection and Premium Collection Subsection

Inquiries: Minato Call, Tel: 03-5472-3710

SUPPORT SERVICES

Exemption System for National Pension Plan Premiums

An exemption system is in place for the National Pension Plan, designed for people having difficulties paying the premiums. There are four types of exemptions available: 25%, 50%, 75% and full.

Other systems are available for students and people aged 49 and under if their own or their spouse's income or their own income in the case of a student in 2016 is lower than the criteria. The exemption period will not reflect for the amount of pension annuity. An applicant can apply for an exemption retroactively up to 25 months from the time of application.

Income criteria

If the income of a person, her/his spouse or the head of her/his household in the previous year is lower than the designated amount, that person is deemed eligible for the exemption system. The criterion varies by number of household members. The exemption system includes special cases such as unemployment, disasters and other hardships.

Eligibility period

The period of the exemption is included in the eligibility period to receive benefits of the senior citizen, disability or survivor's plan.

Calculation of the annuity of the basic pension for senior citizens

Note: If a person does not pay her/his premiums for a certain period, the period will be excluded in the calculation of her/his Basic Pension annuity.

For more details about the calculation, please see the Minato City Web.

Deferred premium payments

Premiums unpaid due to the exemption system can be paid in arrears within 10 years after the exemption period.

Inquiries: National Pension Subsection, Tel: 03-3578-2665

Minato Pension Office, Tel: 03-5401-3211

MINATO BULLETIN BOARD



Programs may change without notice. All events listed on this page are conducted in Japanese except MIA events. For more information, please see the Minato City Web.

Minato City Events

SCHEDULE FOR JUNE

Date	Time	Program	Place/Capacity/ Application
1 to 14	8 a.m. to 11 p.m.	Eritrea – Sense of Freedom Introducing the culture of Eritrea and photo exhibition Inquiries: Embassy of the State of Eritrea, info@eritreambassy-japan.org	Civic Gallery of Minato Park Shibaura
1) 9 to 11, 9 a.m. to 5 p.m. 2) 13, 9 a.m. to 3 p.m.		Art and Photo Exhibition on Southern Africa hosted by the Embassy of the Republic of Namibia in Japan Please experience the wonder of Southern Africa through arts and photos. Inquiries: Global Community Planning Subsection, Tel: 03-3578-2046	Gallery of Takanawa Civic Center
Library Movies *Doors open 30 min. before the starting time			
3	2 p.m.	Juno and the Paycock – 1930, England, 94 min.	Takanawa/40
4	2 p.m.	More than Honey – 2012, Switzerland, 96 min.	Azabu/30
8	Noon	Discovery Channel, Astronauts' World – 2000, U.S. 50 min.	Mita/60
9	6:30 p.m.	Amazing World Heritage #9, Central America – 2010, Japan, 52 min.	Akasaka/30
10	2 p.m.	Echoes of a Summer – 1976, U. S. 100 min.	Konan/45
14	1 p.m.	Hakone Whirlwind Report – 1952, Japan, 136 min.	Minato/90
14	3 p.m.	Come on Little Pig from World Animal Stories – 1983, Germany/China/Japan, 100 min. *High school students and under	Takanawa Annex/50
16	2 p.m.	Private Buckaroo – 1942, U.S. , 69 min.	Takanawa/40
17	2 p.m.	Stavisky – 1973, France, 117 min.	Akasaka/35
21	1 p.m.	Michael Jackson, King of Pop – 2009, England, 84 min.	Minato/90
23	5:30 p.m.	Falstaff Chimes at Midnight – 1966, Spain, 116 min.	Azabu/30
24	1 p.m.	Mad Max 2 – 1981, Australia, 95 min.	Minato/90
25	2 p.m.	Robbery – 1967, England, 110 min.	Mita/60
Library Events *Doors open 30 min. before the starting time			
10	2 p.m.	Seminar, "Bird Watching" Call or visit Akasaka Library for reservation	Akasaka/30 Tel: 03-3408-5090
17	2 p.m.	Ocean seminar for adults, "Study the relationship between fish and plankton" Open to Junior high school students and over, call or visit Takanawa Library for reservation	Takanawa/12 Tel: 03-5421-7617
18	10:30 a.m.	Let's play with the singing guy Eligibility: Children aged 0 to 5 and their guardians Call or visit Takanawa Library for reservation	Takanawa/70 Tel: 03-5421-7617
18	2 p.m.	Ocean seminar for kids, "Welcome to the World of Whales" *First to third graders; call or visit Akasaka Library for reservation	Akasaka/20 Tel: 03-3408-5090
25	2:30 p.m.	Reading class, "The Metamorphosis by Franz Kafka" Participants must read <i>The Metamorphosis</i> before this class. Call or visit Akasaka Library for reservation from June 11	Akasaka/20 Tel: 03-3408-5090
25	2:30 p.m.	Origami class, "Make some ornaments for the star festival" Eligibility: 4 year olds to 6th graders and their guardians	Azabu/30
Announcement from libraries The book return box at the Lifelong Learning Center, 3-16-3 Shimbashi will be temporarily closed on June 29 & 30. Two new book return boxes at the Lifelong Learning Center and Shibaura-konan Civic Center, 4-13-1 Shibaura will be set up on July 1. Please do not return CDs and DVDs through a book return box.			
Sale of Recycled Bikes Minato Recycling and Management Office Working Contact, 3-9-6 Moto-azabu			
11	10 a.m.	About 15 recycled bikes in good condition that have been reclaimed and repaired are sold Price: Approx. ¥9,000 The drawing starts at 10:30 a.m. Minato City residents have priority. Inquiries: Minato Call, Tel: 03-5472-3710	
MIA Events			
Minato International Association Toei Kita-aoyama 1-chome Apt. No. 3, 1-6-3-B1 Kita-aoyama 107-0061 Tel: 03-6440-0233 Fax: 03-6440-0234 E-mail: office@minato-intl-assn.gr.jp Web: http://www.minato-intl-assn.gr.jp/ *For more details, see the Minato Monthly Website.			
3	1 to 3:30 p.m. Doors open at noon	Madagascar Day Introduction of the country by embassy staff, photo exhibition, Madagascar food, etc. Fee: ¥1,000 for MIA members and ¥1,500 for non- members Capacity: First 120 people	Multi-purpose room, Mita NN Bldg. 4-1-23 Shiba / Call or send an email to MIA
10	2 to 3 p.m.	Let's make Nioi-bukuro, incense sachet Introduction of the history of Japanese incense, incense in the world, and effect Pick up your favorite incense and make an incense sachet. Fee: ¥1,500 for MIA members and ¥1,800 for non- members Capacity: First 50 people	Akasaka Civic Center, 4-18-13-4F Akasaka / Call or send an email to MIA
10	11:30 a.m. to noon	Japanese Conversation Partner This program is for foreign residents who are looking for opportunities to speak Japanese. *Basic Japanese is required.	MIA/ Call or send an email to MIA
24	10 a.m. to noon	Coffee Morning Having difficulties finding the information you need? We can help you. Coffee will be served.	MIA/ Call or send an email to MIA
MIA is supporting foreign residents through international exchange. Cultural exchange programs: Hiking, New Year's party, A Day to Present a Country, Japanese cooking, and more to expand the international exchange Language courses: Basic Japanese for non-Japanese speakers We are now recruiting new members who are interested in international exchange and would like to participate in MIA events. Please contact us for more information.			
Kissport Events and Announcement Minato Sports, Community, Culture, and Health Foundation Tel: 03-5770-6837 Fax: 03-5770-6884 Web: www.kissport.or.jp			
July 8	2 p.m.	Music Promenade Concert for families Performers: Students of Musashino Academia Musicae No admission fee and no reservation is required.	Takanawa Civic Center, 1-16-25 Takanawa
July 16	2 p.m.	Akasaka Fureai Concert Suntory Hall Opera Academy presents "Operatic Concert" Fee: ¥500, no reservation is required.	Akasaka Civic Hall, 4-18-13 Akasaka

HEALTH & SAFETY

Heat Stroke Prevention

Heat stroke is a serious health condition that can be caused by high air temperatures and compounded by a person's physical condition. Every year, after the end of the rainy season, the number of heat stroke patients tends to increase rapidly. Please be careful to avoid heat stroke by avoiding unnecessary exposure to sun on very hot and humid days, and days with little wind. Heat stroke can occur inside the house, as well. Senior citizens and children should be especially cautious.

How to prevent heat stroke

Avoid exposure to direct sunlight when outside on very hot and humid days. Use parasols and hats to block sunshine. It is advisable to wear light-colored and loose-fitting clothes. Drink plenty of water to avoid becoming dehydrated. When indoors, use fans or air conditioners to cool down the room temperature. People who are under treatment for a chronic disease should consult a medical doctor about means to avoid dehydration. Having a balanced diet and exercising regularly is a key to avoiding heat stroke.

Symptoms

Light: Nausea, light-headedness, muscle ache, heavy sweating

Moderate: Headache, vomiting, fatigue

Severe: Convulsion, inability to respond when being called, unconsciousness, high fever, inability to walk straight

If you experience heat stroke

Move to a cooler place immediately and drink water or a sports drink to regulate your body temperature and restore your body's water and salt level. Alert someone near you about your condition and if you don't feel better, visit a hospital as soon as possible.

Supervising Section: Environmental Policy Subsection and Health Service Subsection

Minato Public Health Center

SCHEDULE FOR JUNE

Eligibility: Registered residents or registered foreign residents of Minato City
Minato City Resident Health Checkup: All residents to undergo a physical examination, urine analysis, chest X-ray, blood-pressure check, and blood test. Certain residents are to undergo an electrocardiogram examination.
Additional checkup: Osteoporosis examinations for female recipients of the Minato City resident health checkup except who are 30 or 35- year-old or have not had a medical checkup in five years.

Minato Public Health Center: 1-4-10 Mita, Tel: 03-6400-0083

Elegibility	Examination date	Exam. results available	Place
City residents aged between 30 and 39 born in June, Limited to 70 people daily	Check in time: 8:45 to 10:30 a.m.	Check in: 1 to 2 p.m.	(A)
	July 12	August 9	
	July 26	August 23	

Appointment for HIV test, Tel: 03-6400-0081

Elegibility	Examination date	Exam. results available	Place
HIV/STD test*	Open to all	June 22, July 6, July 20	9:30 to 10:30 a.m. (A)

*The result is two weeks later from the check-up day at the Minato Public Health Center

Other examinations

	Elegibility	Date	Time	Place
Stomach, colon cancer	Residents aged 35 or older Capacity: 20 people	Weekdays in July	8:30 to 9:30 a.m.	(B)
Osteoporosis *individuals receiving osteoporosis treatment are not eligible	Minato City residents aged 20 and over who have not received this exam. in the past 5 years. Capacity: 20 people	July 12 July 26	2 to 2:45 p.m.	(A)
Checkup and consultation for babies/infants	An eligible must receive the notification to be eligible - 4-month-old: Born in March 2017 - 18-month-old: Born in December 2015 - 3-year-old: Born in June 2014		(A) A notification will be sent to eligible.	
Birthday dental checkup	Babies aged 1 and 2 who were born in July	July 14	1:30 to 2:30 p.m.	(A)

(A) Minato Public Health Center

(B) Kokoro-to-karadano Genki Plaza, 3-6-5 Iidabashi Chiyoda-ku

Note: You need to apply and make an appointment in advance.

Inquiries and appointment: Minato Public Health Center, Tel: 03-6400-0083
For inquires in English, contact Minato Call, Tel: 03-5472-3710

Himawari Medical Facilities Consultation Service

If you are looking for a doctor or pharmacy, you can call or visit the Himawari English language website. Himawari also provides emergency medical translation services.

Tel: 03-5285-8181 9 a.m.- 8 p.m.

www.himawari.metro.tokyo.jp/qq/qq13enmnl.asp

COMMUNITY EVENT

Shiba Fureai Festival

Come join us for the 12th annual Shiba Fureai Festival for plenty of opportunities to enhance cultural exchanges with other residents, enjoy concerts and street food stalls. By encouraging the use of reusable plates and utensils, the Fureai Festival also offers an opportunity to rethink and increase our awareness of environmental issues.

Date and time: June 10, 10 a.m. to 3 p.m. *Light rain or shine

Place: Shiba Park, 4-8-4 Shiba Koen

Program: Games, stamp rally, visiting of Shiba Region's official mascots and pony, learning to be eco-conscious by using recycled utensils, panel exhibitions, Fureai market with food stalls and booths selling fresh vegetables, Fureai concert and dance performed by community groups and more

Events conducted by Shiba Meeting

- Town charms discovery group: walking tour around Shiba Park, quiz and panel exhibition
- Town development group: distribution of disaster supplies, panel exhibition, and Green Corner
- Local community group: shouting competition and making your own fan

Shiba BeeBee's events

A booth displaying details of the beekeeping project, organized by private citizens group Shiba BeeBee's with the cooperation of Shiba Regional City Office

Supervising Section: Community Policy Subsection of Shiba Regional City Office

CULTURE

FY2017 Minato Cooperation Project for Cultural Program

A cultural program unique to Minato City – Looking beyond the Tokyo Olympic and Paralympic Games

What is the Cultural Program?

Under the Olympic Charter, the host country is required to organize a Cultural Program, which is a program of cultural events, covering the entire period that the Olympic Village is open for. This Cultural Program movement began in 1992 with the Barcelona Games, and grew into a program of an unprecedented scale by the 2012 Games in London.

Minato City's actions

Minato City launched the Minato City Cultural Program Partnership Project in FY2016. Certain cultural and arts projects held in Minato City, as well as their organizers, are designated as partners of Minato City for a certain period of time. Minato City covers part of the project costs and works with these designated partners to bring about the effective and successful implementation of the designated projects.

About the symposium

- Explanation about the Cultural Program
- Introduction to various designated projects for this year, which will be implemented as Minato City Cultural Program Partnership Projects
- Utilization of the Cultural Program with a view to 2021 and beyond, and contents of the legacy: Keynote lecture, introduction to designated Minato City Cultural Program Partnership Projects for FY2017, symposium

Eligibility: Open to all

Date and time: July 8, 3 p.m. – 5:30 p.m.

Place: Libra Hall, 1-16-1 Shibaura

Capacity: First 100 people, babysitting service is available

Admission fee: Free

Registration: Minato Call, Tel: 03-5472-3710 between 9 a.m. and 5 p.m., from 2 p.m. on June 12 to 5 p.m. on June 30

Supervising Section: Promotion of Art and Culture Subsection

COLUMN

Seasonal News

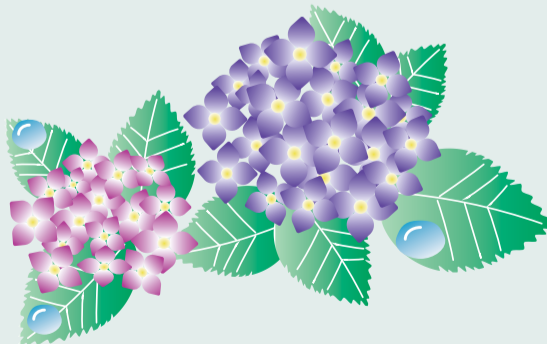
The Flowers of Minato City

June is the only month in the year with no national holiday. In Tokyo, June is typically described as the period of *tsuyu*, the rainy season. *Tsuyu* is an expression used only for this season. It is not used to describe any other period of the year.

Temperatures are getting higher and the humidity is high in this season, so it is often said to be a difficult time for bodies that are not accustomed to the heat.

Do you know about the flowers of Minato City? They are flowers of June, the hydrangea and rose. As it happens, they bloom during this season. The hydrangea, which blossoms gently after bathing in the rains of *tsuyu* and changes color, is a flower that many people have appreciated since ancient times. In Minato City, the Arisugawa-no-miya Memorial Park, Ichinohashi Park, and Shiba Park are famous spots for the hydrangea.

The other flower is the rose. There are many varieties of roses, and it is well-loved by many people for its wide range of colors and fragrance. Many of the roses that are grown by people in Japan today have come from overseas. Minato City has records of a rose garden created in Shiba Park in 1887. In Minato City, roses can be found not only in Shiba Park, but in Shibaura Chuo Park and Hikawa Park.



COMMUNITY EVENT

Gender Equality Festival at Libra 2017

How we all can change the present and the future

As part of Gender Equality Week, there will be seminars, lectures, reports of the outcomes of various activities, sales of handicrafts, and snack booths provided by groups and organizations registered with Libra. Libra's mascot character will also be at the event venue. Everyone is welcome to attend.

Date & time: June 24, 10 a.m. to 4 p.m. and June 25, 10 a.m. to 3:30 p.m.

Place: Gender Equality Center "Libra," 1-16-1-1F & 2F Shibaura

Seminar

Date & time: June 24, 1 to 2:30 p.m. at Libra Hall
Coming up with appealing forms of communication

Speaker: Hiroko Kiba, newscaster

Capacity: First 208 people

Application: Send an email to Libra at libra@career-rise.co.jp with your name, address and telephone number.

Program

Presentation of activity results, Handicraft exhibit and sales, Concert, music, dance and theatrical performances, tea ceremony, café, snacks, and more. For more information please visit the Libra website: www.minatolibra.jp

Note: All events will be conducted in Japanese.

Supervising Section: Human Rights and Gender Equality Subsection

Inquiries: Libra, Tel: 03-3456-4149

The 45th Consumers' Exhibition

The Minato Exhibition for Consumers and Living is also held.

Program: Presentation of residents' daily issues, useful events for daily life, and more.

Inquiries: Minato Consumers' Center,
Tel: 03-3456-4159

CHANNEL 11

Minato Public TV Program Guide

J:COM MINATO-SHINJUKU [JUNE schedule](#)

Program	Time	Program
Hi from the Mayor of Minato City 20 min. bilingual-program	10:30 a.m.	The Mayor talks about measures of food waste with representatives of Hommura Elementary School, Toita Women's College, and cooperating restaurants involved in food waste reduction efforts.
	1:30 p.m.	
	3:30 p.m.	
	5:30 p.m.	
Minato-ku Koho Topics, Topics in Minato City 30 min. program	9:30 p.m.	Public Announcement Delivers important announcements, new information, or events in Minato City. 1-10: Subsidy for safeguarding elevators in apartments 11-20: Introduction of Koryo Junior High School 21-30: Election for the Tokyo Metropolitan Assembly
	10 a.m.	
	1 p.m.	
	3 p.m.	
	5 p.m.	
	9 p.m.	

Note: Programs may change without notice.

You can also watch the programs broadcast on the Minato City Web or Youtube. The Videos/DVDs of programs broadcast from June 2016 to last month can be also rented at the Office of the Mayor, each Regional City Office and municipal libraries.

Inquiries: J:COM Minato-Shinjuku, Tel: 0120-914-000

INTERFM 89.7 MHz

Minato Voice

Time: 6:26 to 6:29 a.m. and 5:56 to 5:59 p.m.

Monday & Thursday: English, **Tuesday:** Japanese

Wednesday: Chinese, **Friday:** Korean

Population of Minato City

AS OF MAY 1, 2017 Total: 251,455

Japanese Residents: 231,980

Male: 108,019 / **Female:** 123,961

Registered Foreign Residents: 19,475

Male: 10,277 / **Female:** 9,188