

# MINATO MONTHLY

Published by Minato City

Published monthly by: Minato City Tokyo Edited by: Public Relations Subsection, Office of the Mayor, Minato City Hall, 1-5-25, Shibakoen, Minato-ku, Tokyo 105-8511  
Tel: 03-3578-2111, weekdays, 9 a.m. to 5 p.m. E-mail: kuminkoho@city.minato.tokyo.jp Web: www.city.minato.tokyo.jp Circulation: 10,000 copies

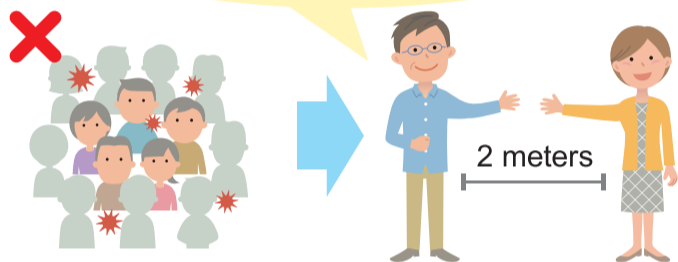
No 400 June 2020

## Stop the spread of COVID-19

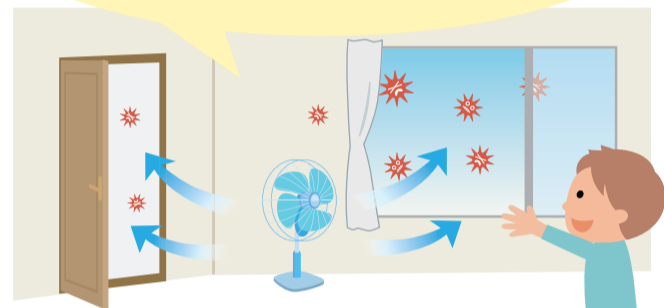
# Avoid **Closed spaces, Crowded places,** and **Close-contact settings!**

● Even in open spaces, be mindful of other Cs. We should aim for "Zero C."

**Make enough space**  
with others.



**Open doors and windows.**  
**Ventilate frequently.**



**Avoid exercise with**  
**many people even outdoors.**  
Walking or running in a  
small group is fine.



**Make space in restaurants.**

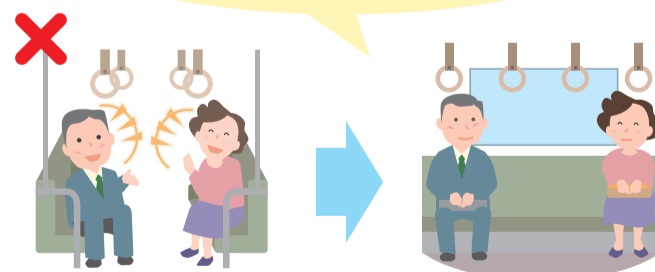
- Avoid dining in a large group
- Leave one empty seat between you
- Sit diagonally across the table



**Wear a mask**  
when talking.



**Refrain from talking** inside  
the train or elevator.



From the Prime Minister's Office of Japan website <http://www.kantei.go.jp>

Minato Monthly is delivered with The Japan Times/International New York Times on the first of each month. It is also available at municipal facilities, post offices and subway stations (Akabanebashi, Akasaka, Akasaka-mitsuke, Aoyama-itcho, Azabu-juban, Daimon, Gaien-mae, Hiroo, Kamiyacho, Mita, Nogizaka, Omotesando, Roppongi, Shimbashi, Shiodome, Shirokanedai and Shirokane-Takanawa) in Minato City. The articles appearing in the Minato Monthly are also found on the Minato City Web: [www.city.minato.tokyo.jp](http://www.city.minato.tokyo.jp)

Minato Monthly home-delivery service: For free delivery of Minato Monthly to foreign resident's homes in Minato City, contact Minato Call or Minato Monthly by e-mail at [kuminkoho@city.minato.tokyo.jp](mailto:kuminkoho@city.minato.tokyo.jp). Please write "Minato Monthly" in the subject line.

**Minato Call**  
CITY INFORMATION SERVICE  
03-5472-3710

## ANNOUNCEMENT

# 2020 National Health Insurance Premium Statements and Payment Slips

National Health Insurance (NHI) premium statements and payment slips based on the income during the year 2019 will be sent to heads of households on June 16.

## Calculation of insurance premiums

Annual health insurance premium amount is calculated based on the number of the enrolled health insurance members and the total income amount of the household in the year 2019.

## Reduction of insurance premiums

For households whose total annual income earned between January and December of the previous year is below designated levels, the per capita amount of their NHI premiums are reduced by 70%, 50%, or 20%. Whether a household qualifies for a reduction will be determined by total household income. Therefore, residents are required to declare the income of all household members, even in cases when there is no income.

## Reduction measure for involuntary termination of employment

People who have lost their jobs due to corporate restructuring or other reasons may be eligible for NHI premium reduction.

### Eligibility:

- 1) People who have left their jobs due to business reasons on the part of their employers, such as bankruptcy or labor reduction.
  - 2) People who have left their jobs due to reasons stipulated under the Employment Insurance Act, for example the expiration of their employment contract.
- Applicants should bring their Certificate of Eligibility for Employment Insurance to apply.

## Mailing of payment slips

Please pay the annual insurance premiums with the payment slips that will be sent in mid-June. There are two types of payment slips: one divided in ten installments from June to March of the following year and one for a lump-sum payment for twelve months. Those who are paying premiums by bank transfer or deducted by special collection will only receive the premium statements.

## Payments

You can pay your insurance premiums by banks, credit unions, credit cooperatives, the Japan Post Office Bank, convenience stores or by using your smartphone. You can also pay through the counter services of Regional City Offices or Minato City Hall. Please note that payments cannot be made at convenience stores or via mobile payment if the amount shown on a single premium payment slip exceeds ¥300,000. Please contact us, if you are unable to pay the NHI premiums due to the impact of the Novel Coronavirus infection.

## Notification of premium changes

Eligibility Subsection will review health insurance premiums when residents join or withdraw from the NHI or when there are changes in the amount of income.

**Supervising Subsection:** Eligibility and Premium Subsection

## WELFARE

# Minato City Barrier-free Map

An online barrier-free map designated for senior citizens, disabled people, and people accompanied with an infant, is available. This map contains details of barrier-free facilities such as parks, stations, toilets, and other public places in Minato City. You can see the map from PC, smartphone, or mobile phone in English and Japanese. Please take a look.

**URL:** <https://www.city.minato.tokyo.jp/hofukukanri/kenko/fukushi/shogaisha/hibakusha/bf-townmap.html>

**Supervising Section:** Health and Welfare Section

## SUPPORT SERVICES

# Exemption System for National Pension Plan Premiums

An exemption system is in place for the National Pension Plan, designed for people having difficulties paying the premiums. There are four types of exemptions available: 25%, 50%, 75% and full.

Other systems are available for students and people aged 49 and under if their own or their spouse's income, or in the case of a student their own income, in 2019 is lower than the criteria. The exemption period will not reflect the amount of pension benefits.

An applicant may apply for an exemption up to 25 months retroactively.

## Income criteria

If the income of a person, her/his spouse or the head of her/his household in the previous year is lower than the designated amount, that person is deemed eligible for the exemption system. The criterion varies by the number of household members. The exemption system includes special cases such as unemployment, disasters and other reasons. Also, if your income after February 2020 is lower than the designated amount and decreased due to the impact of the Novel Coronavirus infection, there is temporary exemption available.

## Eligibility period

The period of the exemption is included in the eligibility period to receive the Basic Pension for the Elderly, the Basic Disability Pension, and the Basic Survivors' Pension.

## Calculation of the annuity of the Basic Pension for the Elderly

Compared to cases in which the premiums are fully paid, in cases when payment exemptions apply, the amount of the pension benefits will be calculated with the below stated ratio in the chart, compared to those who paid premiums fully.

Types of exemptions	Calculation ratio for the exemptions admitted after April 2009	Calculation ratio for the exemptions admitted before March 2009
Full	1/2	1/3
75%	5/8	1/2
50%	3/4	2/3
25%	7/8	5/6

**Note:** If a person does not pay her/his premiums for the partially exempted period, this period will be excluded in the calculation of his/her pension benefits.

## Deferred premium payments

Premiums unpaid due to the exemption system can be paid in arrears within 10 years after the exemption period.

**Inquiries:** National Pension Subsection, Tel: 03-3578-2665  
Minato Pension Office, Tel: 03-5401-3211

## CHANNEL 11

# Minato Public TV Program Guide

J:COM MINATO-SHINJUKU **JUNE schedule**

Program	Time	Program
<i>Minato-ku Koho Topics, Topics in Minato City</i>	10 a.m., 1 p.m., 3 p.m., 5 p.m., 20 min. program	<Public Announcements> Delivers important announcements, new information, or events in Minato City. <b>1-10:</b> Election for the Mayor of Minato City <b>11-20:</b> Consultation for child-rearing <b>21-30:</b> Election for the Tokyo Governor

**Note:** Programs may change without notice. You can also see the programs broadcasted by this channel on the Minato City Web or Youtube. The Koho Topics are also broadcasted in the Chii-bus and the Odaiba Rainbow bus. Video/DVD lending is available at the Office of the Mayor, Regional City Offices, and each public library. Videos/DVDs of programs broadcasted from May 2019 to last month are available.

**Inquiries:** J:COM Minato-Shinjuku, Tel: 0120-914-000



# MINATO BULLETIN BOARD

## Minato City Event

SCHEDULE FOR JUNE

Event listed on this page is conducted in Japanese.  
For more information, please see the Minato City Web. Program may change without notice.

Date	Time	Program	Place/Capacity
Sale of Recycled Bikes			
Minato Recycling and Management Office Working Contact, 3-9-6 Moto-azabu			
14	10 a.m.	About 25 recycled bikes in good condition that are reclaimed and repaired are sold. The drawing starts at 10:30 a.m. Minato City residents have priority. <b>Inquiries:</b> Minato Call, Tel: 03-5472-3710	

### HEALTH & SAFETY

# Heat Stroke Prevention

Every year, after the end of the rainy season, the number of heat stroke patients tends to increase rapidly. Please be careful to prevent heat stroke by avoiding unnecessary exposure to the sun on very hot and humid days, and days with little wind. Heat stroke can occur inside the house. Senior citizens and children should be especially cautious.

#### How to prevent heat stroke

- Use air conditioners or fans to cool down the room temperature.
- Use hats and parasols to avoid sunlight when outside.
- Wear light-colored and loose-fitting clothes.
- Drink a lot of water.
- Have a balanced diet and exercise regularly to make it easy for your body to sweat.



### RESIDENT SERVICE

# AI Chat Has Become Easier to Use

Minato City is making use of AI in a chat function, in order to automatically answer questions that arise from everyday life or inquiries about administrative information, in Easy Japanese and English.

By asking questions using the keywords you want to know, maps, images, and others will be displayed, providing easy-to-understand answers.

With this, you can get the information you need 24 hours a day, 365 days a year, without visiting the city hall.

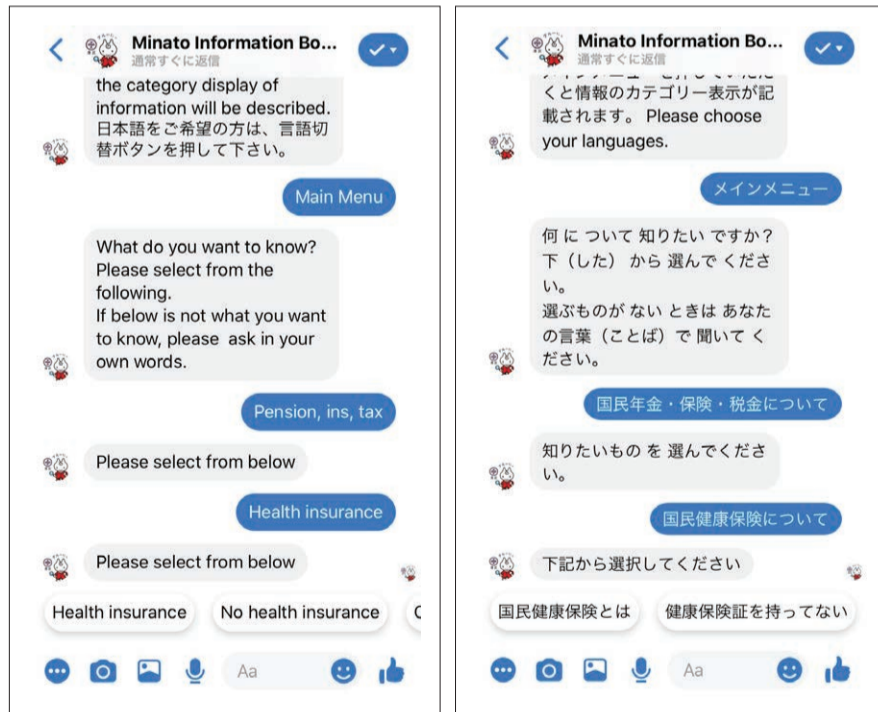
#### How to Use

1. Access Facebook Page “Minato Information Board” at <https://facebook.com/city.minato.mib/>
  2. Click “Send Message”
  3. Enter keywords to ask the AI questions  
Disaster prevention, Waste disposal rules, Education, Childrearing, International/Culture events, Health/Medical institutions, Pension/Insurance/Tax, Tourism, Neighborhood Associations
- \*Facebook Messenger app is required to use this service. It is free.

“Minato Information Board” QR Code



**Inquiries:** Global Community Planning Subsection,  
Tel: 03-3578-2565



### Minato City tree



To commemorate the 40th anniversary of Minato City, city tree and flowers were chosen as a symbol of nature in December 25, 1986.  
The city tree is *hanamizuki*, dogwood.

PARENTAL BENEFITS

# Child Allowance

The following information is about Jido Teate, or Child Allowance, benefits and requirements needed to receive them.

## Child Allowance, Jido Teate

**Eligibility:** Child Allowance is provided for people who are raising a child until the first March 31 after the child's 15th birthday. A child up to the third year of junior high school who live in Japan between April 1, 2020 and March 31, 2021 is eligible.

**Under three years old:** ¥15,000/month, per child

**Over 3 years old to final year of elementary school age:** ¥10,000/month, per child  
¥15,000 for the third and subsequent children

**Junior high school student:** ¥10,000/month, per child

**Families exceeding the minimal income limit:** ¥5,000/month, per child

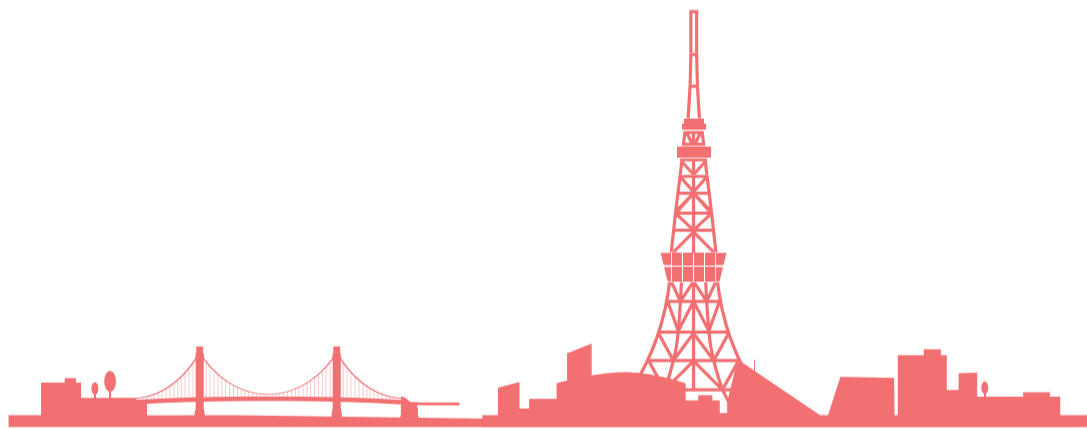
### Note

- If the child is living in a facility, for example an infant home, or is in the care of a foster parent, the application procedures should be completed by the head of the facility or the foster parent.
- If the father and mother live separately due to divorce negotiations, the parent living with the child shall be the priority recipient of child allowances.
- If the father and mother live overseas, the person bringing up the child in Japan shall be provided with the child allowances, when such persons are appointed by the father and mother.
- In principle, child allowances are provided for the benefit of children living in Japan. However, if a child lives abroad for the purpose of overseas studies, he/she shall be eligible only if certain requirements are met, such as if the child does not live with his/her father or mother.

### Notification of Current State Report

Residents currently receiving Child Allowances are required to submit a Genkyo Todoke, Current State Report, to update their eligibility status. Minato City will send the relevant materials in early June. Please send all forms and documents via postal mail or online, or bring directly to Children's Benefit Subsection, Minato City Hall, 105-8511 by June 30. Recipients who fail to submit all forms by the abovementioned deadline will no longer be able to receive the allowances. If documents were submitted after their due dates, benefit payments will be transferred to the designated bank accounts after November.

**Inquiries:** Children's Benefit Subsection, Tel: 03-3578-2431



COLUMN

## Introducing Traditional Arts and Crafts

### Edo Sashimono

*Edo sashimono* is a wooden furniture made by jointing wooden pieces together. There are drawers, desks, mirrors, and more. *Sashimono* refers to *monosashi*, a ruler in Japanese, which is used to precisely measure timber materials in order to make wooden furniture.

In the production process, you can see the craftsman's *Iki*, an aesthetic to create sophisticated and stylish product. Instead of using nails, hidden notches and grooves are carved inside to joint wooden pieces together. Also, high quality timber materials such as zelkova, cypress, and mulberry are used and coated with lacquer to show the beauty of the wooden furniture.



# Visit Minato City web for the measures for the Novel Coronavirus infection

All events listed in Minato Monthly may be delayed or cancelled due to the prevention measures for the Novel Coronavirus infection.

For the latest information regarding measures for the Novel Coronavirus infection, please visit the Minato City web.

## Free Delivery Service of Minato Monthly

We will deliver the Minato Monthly to the foreign resident's home in Minato City free of charge. Contact or send a fax to Minato Call or e-mail to [kuminkoho@city.minato.tokyo.jp](mailto:kuminkoho@city.minato.tokyo.jp) Please write "Minato Monthly" in the subject line.

INTERFM 89.7 MHz

## Minato Voice

**Time:** 5:56 to 5:59 p.m., 3 min. program

**Monday & Thursday:** English

**Tuesday:** Japanese

**Wednesday:** Chinese

**Friday:** Korean

\*Programs may change without notice.

**Inquiries:** Public Relations Subsection, Tel: 03-3578-2041

## Population of Minato City

AS OF MAY 1, 2020

**Total:** 262,239

**Japanese Residents:** 241,795

**Male:** 113,131 /

**Female:** 128,664

**Registered Foreign**

**Residents:** 20,444

**Male:** 10,719 /

**Female:** 9,725

