



The articles which were written in Japanese are directly translated into English.



The words "Europa House" along the outer wall create a symbolic exterior. The balconies of the residences can be seen above them.



4



5



6



7



8

- 4 The lobby space right beyond the entrance. The designs of the euro coins of each country are displayed.
- 5 Paintings and sculptures donated from different EU countries are on display, including this one provided by the Hungarian Embassy.
- 6 National flags of the EU member countries line the walls of the auditorium, equipped with simultaneous interpretation booths for four languages.
- 7 In the other meeting room, conferences with diplomats from the EU member countries are held regularly.
- 8 The courtyard between the two buildings provides a space where staff and visitors can take a break.



1



2



3

- 1 All the apartments in the residential wing have different layouts.
- 2 The European Union flag is displayed on a plaque at the entrance of the Delegation of the EU to Japan.
- 3 The office wing is on the left, while the living quarters are on the right.

## The EU Comes to Azabu A New Base – Europa House Opens

Located at the top of Nambuzaka Slope at Minami-azabu 4 and 5-chome and a seven-minute walk from Hiroo Station is an area around Arisugawa-no-miya Memorial Park scattered with elegant embassies, hospitals, community facilities and other buildings. One year ago, "Europa House" was newly erected in this neighborhood to serve as the new base for the European Union's Delegation to Japan, which relocated here in August 2011.

### First Purpose-built Delegation in the World

"EU" stands for the European Union. It is headquartered in Brussels, the capital of Belgium, and it currently has 27 member countries (Croatia is scheduled to join in July 2013). The EU has diplomatic missions around the world, and the Delegation to Japan was established in Tokyo's Chiyoda City in 1974. All related facilities such as the office, the Ambassador's residence and the living quarters of the diplomatic staff were rented. With the aim of improving work efficiency, and with focus on the importance of the relationship between the EU and Japan, the Delegation started to consider in 2003 a system under which it could gain complete ownership of its facilities. This led to the purchase of national land (formerly the Local Autonomy College) in Minami-azabu in 2006. The construction project itself was a collaboration between ADPI, a subsidiary of the Aeroports de Paris Group, and Taisei Corporation.

Covering an area of approximately 3,330 square meters, Europa House consists of a four-story office wing and a six-story residential building. It is the first time in the world for the EU Union to purchase land and build facilities from scratch for one of its missions.

### Construction with a High Regard for Sustainability

In consideration of the environment, the entire structure was based on the concept of sustainability. For example, solar panels were installed on the roof of the residential building. The panels have a maximum generation capacity of 18.3kW, which contributes to energy conservation. Other environment-friendly features can be seen throughout the facility, such as spiral-shaped gardens designed to harvest rainwater and light sensors to reduce unnecessary illumination.

It was also the EU's first attempt at constructing an office and residential building on the same property. Copper-bronze plating was used for the residential wing. The copper is expected to gradually turn green and eventually form an impression of unity with the green office building and the surrounding trees.

Some staff members initially had concerns about the plans for an integrated residential and work space. However, since the move, it has been well-received. The Ambassador's residence is located on the top floor of the residential building. There are also approximately 20 apartments of varying size and appearance for the diplomats. Viewed from the outside, one can clearly see that the balconies are all different and unique. This is what defines the EU's style: it is based on the concept of the diversity of Europe. The building itself has avoided adopting a specific country's architectural style.

The current EU Ambassador is an Austrian diplomat who has also served as a former Austrian Ambassador to Japan (1999-2003). The Minister of the EU Delegation is a diplomat from the Republic of Ireland. They are both currently employed by the EU's diplomatic arm, the European External Action Service. In total, there are currently 15 diplomats from 10 countries working at the Delegation.

### Plan to Hold an Open Day Once a Year in the Future

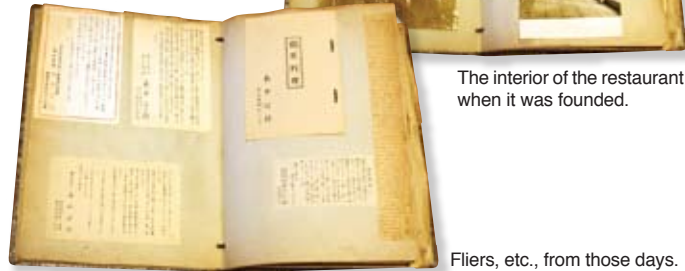
Along with the Ambassador's office, there are private offices for approximately 50 people in the office wing. There is also a large conference room with a capacity of 200 which has simultaneous interpretation booths for four languages, as well as smaller conference rooms. The Open Day which took place this May saw the facility open to the public, and was a huge success. While it will depend on future budgets, the EU Delegation says it would like to hold an Open Day every year, in order to further deepen ties with Japan. We are also looking forward to this, and want to take a continued interest in the EU.



This shop is located on the way up the hill which connects Akabane-bashi and Iikura. Once you step inside, it's like you've entered the quietly decorated atmosphere of a summer resort in the mountains. Akahane, known for its falconer dishes and hospitality, was a favorite destination for many writers and prominent figures in postwar Japan. We interviewed Miyoko Akahane, who inherited this restaurant in Higashi Azabu from her aunt and parents.

# A Japanese Restaurant which Continues the Tradition of Falconer Hospitality

This shop is located on the way up the hill which connects Akabane-bashi and Iikura. Once you step inside, it's like you've entered the quietly decorated atmosphere of a summer resort in the mountains. Akahane, known for its falconer dishes and hospitality, was a favorite destination for many writers and prominent figures in postwar Japan. We interviewed Miyoko Akahane, who inherited this restaurant in Higashi Azabu from her aunt and parents.



The interior of the restaurant when it was founded.

Fliers, etc., from those days.

It all started from a record of friends that Miyoko's aunt, Umeko kept. According to the story passed along at the Imperial Household Agency, falconer cuisine is food made out of prey following entertainment at a falconer hunting ground. It is cooked on site to enjoy the prey's rich taste. Umeko was invited by her friend who was working for the Imperial Household Agency, and through this relationship, founded the restaurant in October, 1948, in Fukuyoshi-cho, Akasaka, Tokyo, under the supervision of the late Count Bojo, who was the Empress Dowager's courtesan and the former hunting head of the Imperial Household Agency. The restaurant moved to its current location of Higashi-azabu 1-chome in December, 1968.



Umeko Akahane and her partner falcon. This falcon was also at the restaurant on that day.

The restaurant was managed by Umeko and Miyoko who both enjoyed falconry as a hobby. Many writers and prominent figures gathered at this restaurant attracted by the hospitality and thoughtfulness falconers extended to their lords. Musei Tokugawa always held his interviews for the Weekly Asahi in those days at Akahane, which meant that all his guests went there. "I was told to be very quiet when I came home from school when I was a child on those interview days," commented Miyoko.

Umeko also loved to take photographs and many are still left. However, unfortunately we can't publish them and so we can't say what the names of all those in the photos are, but there are people such as Kiyoshi Inoue, Fubuki Koshiji, Isamu Noguchi, Tetsuzo Tanigawa, Ken Domon, Naoya Shiga, and Renzaburo Shibata.

There was also a picture of Pearl Buck when she came to Japan taken with Harumi Setouchi, Ayako Sono, and Chiyo Uno.



Miyoko's parents were also famous gunners. Her parents were matchlock collectors and they donated their collection to Matsumoto Castle, where it is kept in the gun storage room on the 2nd floor of the keep.

We were in awe as we heard her tell us about the historical connections the family had, but she was a very humble person despite her connections. She invited us to a private room reflecting a special atmosphere and this is where we asked her more questions.



"Do you change this bamboo wooden door every season? Does the screen in the tokonoma (alcove) also change every season?"

"Yes, we change it every month according to the season. You have to change it when the season changes. There are 6 rooms and 12 months..."

Ornaments, screen doors, screens and cushions all have to be managed well. She doesn't feel that this enormous task is troublesome at all.

Everything stems from the spirit of hospitality to guests. The hospitality and thoughtfulness which were extended to the falconers' lords and the Imperial Household Agency have been passed down from her aunt to her parents and now continues at "Akahane" through Miyoko.



Certificate from winning a matchlock competition.



A waterfall screen, creating a cool atmosphere, and a matchlock.

I had passed in front of this restaurant so many times but always felt there was something different about the place each time I looked at their signboard. Once you step inside from the hustle and bustle of the main road in front of Tokyo Tower, you step into the world of a traditional Japanese restaurant of Higashi-azabu. This was a gathering place for lords, important people, writers and prominent figures, who came to experience falconer hospitality. That spirit still continues to this day and the hospitality, which reflects the changing seasons, is extended to guests by this lady who lives in Azabu, which is a story I hope will continue to be told to everyone.



Bamboo screen doors are set up in each room. The light and shade coming in from the screens creates a cool atmosphere.



### Falconer cuisine

This stew was served at hunting grounds to lords. The hunters carried 2-kilogram metal pots hanging from their waists so food could be prepared after falconry. Pictured are some dishes.

(Interviewed by: Tsuneko Ishiyama, Kazue Asakawa Written by: Tsuneko Ishiyama)  
The original article is written in Japanese.

麻布  
びと

"AZABU - A Human Story"

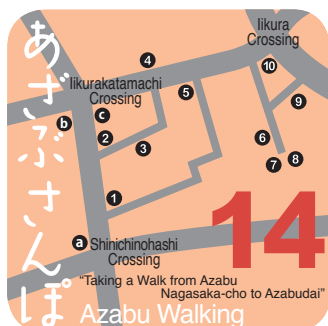


Miyoko Akahane

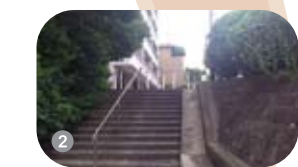




## Taking a Walk from Azabu Nagasaka-cho to Azabudai



### Start



For this edition's Azabu Walking, we decided to take a walk along the Chi-Bus Azabu Route. As you walk across the road from the soba noodle shop **a** at the Shinichinohashi Crossing and climb up Nagasaka slope, you see a large residence surrounded by a high white wall. It is the official residence of the Vice-President of the House of Councilors **1** and where a residence of the Tokugawa Family used to be. If you continue to climb the flight of stone steps **2** on the right, a very quiet residential area opens up in front of us. There is a large residence with soaring trees and in these woods you can see the Bridgestone Museum of Art, Nagasaka Annex **3**. As you walk down the path and turn left at the end of the street and go up, you come out to Gaien Higashi-dori Street. On the other side of the street is the Ikura Guesthouse and the Diplomatic Archives of the Ministry of Foreign Affairs of Japan, and to the right is the building **4** which houses the Japan Post Group's Azabu Post Office. If you continue to walk eastward to your right, you can see the building **5** which houses the Embassy of the Republic of Namibia in front of Mamiana-zaka slope. On the other side of Mamiana-zaka slope is the Embassy of the Russian Federation in Japan. As you take a right on the eastern edge, you come across to the Tokyo American Club **6**. When you get to the dead end of the street, you can see a notice and stone monument **7** of the original point of Japan's longitude and

latitude where the Tokyo Astronomical Observatory used to be. Japan's geodetic datum shifted after the Great Eastern Japan Earthquake, which is also recorded. To the left you can see the Embassy of Afghanistan **8**. As you go up the hill which takes you across Sakurada-dori Street, the Tokyo Tower comes into view. You can see a great-great-grandchild sized tower standing **9** at the entrance of the building on the right. As you come out to Sakurada-dori street and go up the hill, you can see the NOA Building **10**, the landmark of Azabu which houses the Embassy of the Republic of Fiji. The bus stop of the Chi-bus to go back is right near Ikura Katamachi Crossing. The bus to Minato City Hall is at **c** and to Hiroo Station is at **b**. The hilly roads from Nagasaka to Ikura Katamachi offer a mini-adventure trip. We recommend that for those of you who are not so confident about their knees to take a slow walk.



(Research by: Kyoko Ideishi, Keiko Orito Written by: Keiko Orito)



I want to trim my body down, I want to be able to wear my swimsuit, my wedding is approaching... etc. Responding to these diverse needs of his clients is what he strives to do says, **Koji Shimizu, personal trainer.**



To give children power for life

Reading material for parents and children

## KIDS' Hello Work



Are you involved in your school's club activities? Is there anything you would like to change? It was a consultation session in the beginning for the students.

## A Good Hearted Approach to Supporting His Clients Needs of Building an Ideal Body

For this month's edition, we'd like to introduce you to the job of a personal trainer. Two 2nd grade students from Koryo Junior High School went and interviewed Mr. Koji Shimizu, a personal trainer working at the TOTAL Workout (Roppongi) training gym.



The interview took place surrounded by training machines.

### What kind of work do you do?

A personal trainer takes a one-to-one approach in helping to realize the client's ideal body shape. For example, if someone who likes sports is having trouble achieving something, the personal trainer will work with him to identify the weak area and will work back from the goal and propose training and nutrition plans. As a tip, lean red meat, especially chicken is recommendable if you want to increase your metabolism and work on building your muscles.

ing, you'll start to like this job. If you fail, you try to be creative and become good at it. Someone who doesn't mind continuing trial and error is probably suited for this job.

### Why did you want to become a personal trainer?

It was when I was in high school and thinking of giving up pursuing the path to become a professional baseball player. I happened to read many articles in a sports newspaper about Kevin Yamazaki, who worked on shaping the body of Kazuhiro Kiyohara (professional baseball player at that time) and I became inspired by him. I became interested in this work of supporting professional athletes so they can be more active.

### What were the happy moments and difficult moments you experienced through your work?

One of my clients won a martial arts match and became a world champion just recently and I was so happy. The difficult moments are when I have to come up with training programs for sports that I'm unfamiliar with.

### How can you become a personal trainer?

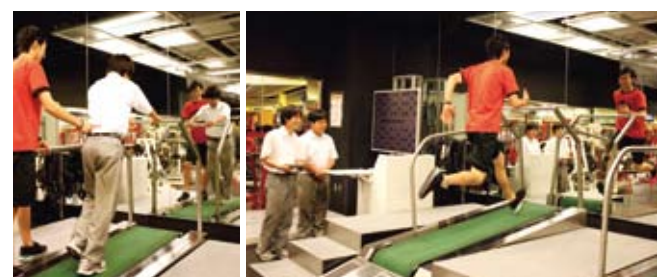
You don't need any special qualification. You can become a personal trainer if you set out to be one. First of all, you need to know the technique of training, and second, you need to be able to communicate with the clients, and having done so, be able to think hard. I'm always careful to ask many questions so I can understand what the client wants to do.

### Any messages to those who are interested in this job?

Everyone is inexperienced in the beginning. I look forward to new trainers who try to think on their own and come up with new proposals, not just doing what they've been told.

### Who is suited for this job?

I can't say who is suited and who isn't, but, if you can keep on continuing...



The students were told that if they worked on their thigh muscles they could efficiently increase their metabolisms and this would improve their abs. Having said that, the incline and speed of the running machine was not easy and moving slowly in order to avoid falling was the best they could do (left). On the other hand, the children were impressed watching Mr. Shimizu run as if he was flying (right).





The Republic of Fiji  
 Total Area: 18,700 sq. kilometers (almost the same size as Shikoku)  
 Population: Approx. 870,000 people (2011, provided by the Embassy)  
 Capital: Suva  
 Ethnic Groups: Native Fijians 57%, Indo-Fijians 38%, Others 5%  
 Language: English (official language), Fijian, Fiji Hindi  
 Religion: Approx. 100% of Indigenous Fijians are Christian (Indo-Fijians are mostly Hindu and Muslim) Breakdown of the total population: 52.9% Christians, 38.2% Hindu, 7.8% Muslim  
 Head of State: President Ratu Epeli Nailatikau (as of November 2009)  
 Legislature: Upper House Senate 32 members, 5 year term (with release), Upper House is released at time Lower House is released  
 Lower House Representative 71 members, 5 year term (with release)

Information from the Ministry of Foreign Affairs  
<http://www.mofa.go.jp/mofaj/area/fiji/data.html>

Ambassador Extraordinary and Plenipotentiary of Fiji, H.E. Mr. Isikeli Uluinairai Mataitoga  
 Interview Cooperation by the Embassy of the Republic of Fiji



## Visiting the Ambassador 20 From the "World" of Azabu



Photograph provided by the Fiji Bureau of Tourism



# Fiji

## Pristine oceans and waterways with captivating beautiful Fijian smile



2



4



1



3



5



6

**Fiji is an archipelago of approximately 330 islands in the South Pacific approximately 2,700 km's east of Australia. Fiji's land topography size is almost similar to Shikoku, with a total land area of 18,000 square kilometers of which more than 100 of its islands are inhabited. We had the honor of interviewing Ambassador Extraordinary and Plenipotentiary of Fiji, H.E. Mr. Isikeli Uluinairai Mataitoga about the beautiful emerald ocean and abundant nature of his country and the relations between Fiji and Japan.**

### Greeting with a "Bula"

One of the most famous expressions in Fiji is "Bula". It is the Fijian word for "hello". During the summer season in Fiji, Fridays are usually called "Bula Time", meaning for no neckties. It so happened that on the day we met the Ambassador, it was Bula Day (Bula Time) and H.E greeted us wearing a bula shirt designed with motifs of Fiji's nature.

H.E Ambassador Isikeli Mataitoga, was recently a Judge of the High Court in Fiji. Following his previous diplomatic postings in Australia, Singapore and Belgium, H.E was posted to Japan and is now on his third year. H.E informed us that his family likes the Azabu area, and Roppongi is just nearby and of great convenience.

Being the resident Fiji Government representative in Tokyo, the Embassy is also accredited to Russia and the Philippines. With the given busy schedules that H.E has, training at a sports gym nearby supports the Ambassador's physical strength. The gym has also become a place to meet and get to know many Japanese people which to him are very important as well.

### Friendly relations emphasizing "Kizuna"

Fiji and Japan have enjoyed friendly and cooperative relations since the establishment of diplomatic relations between the two countries in 1970. The Embassy which opened in 1981 has a very warm atmosphere and has welcomed students from elementary, junior high and high schools for Embassy visits - Educational purposes. H.E told us with a warm smile that recently the Embassy welcomed a high school in Hiroshima as part of their school trip. He hopes to provide opportunities for many through people to people exchanges and further gain knowledge of the traditional Fijian culture, custom. He further said to us, "Of course the Embassy welcomes residents of Minato City as well!"

With that in mind, the Ambassador has also been very active in further deepening people to people exchanges initiatives

throughout Japan. Last year, the Fiji Government as part of its humanitarian assistance to the people of Japan and those affected by the Great East Japan Earthquake and tsunami offered few students scholarships to study in Fiji. Further deepening ties between Fiji and Okinawa since both have many similarities in their economic, environment and marine archipelago. Much effort is also emphasized in line with the Government of Fiji gender equality promotion (Inviting a women's group from Takanezawa-machi, Tochigi to Fiji - with mutual efforts to encourage friendship through the promotion of women's groups have been taking place.) Late March this year, when Fiji suffered from flooding, the Japanese Government sent relief assistance. H.E further emphasized on the Japanese word "Kizuna" (ties) while explaining on this.

### H.E Favorite Dish is Sashimi

H.E has no particular preference on Japanese dish, however, loves sashimi the most. He told us with a smile that "there were many types of seafood which was imported from Fiji". How many of our readers knew that you would be eating tuna from Fiji? He also told us that there is a restaurant in Osaka which specializes in Fiji cuisine as well.

Fiji's economy is driven by a large service sector, manufacturing, wholesale and retail trade sectors. Also there is "Fiji Water" which is widely known throughout the world. Going back to Fiji's history of being colonized by Great Britain, its garment sector is very famous because of advanced sewing technologies in sewing imported fabrics. A part of the British style formal suits are Fiji exports.



Needless to say, with its white sandy beaches, pristine oceans and waterways and the warm hospitality - Fiji is one of the world's favorite tourist destinations. When we asked H.E. on his recommendation he said, "I would like to say all but if I were to name one, it would be the MANA Island Resort & Spa - Fiji." Located in the southwest part of the Mamanuca Islands, the name represents or can be defined as associated with supernatural power from God.

English is the official language spoken in Fiji. Fiji's multicultural society of comprised of the i-Taukei who are the indigenous Fijians, as well as Fijians of Indian descent, and others. In recent years, there have been increases in the number of Japanese visiting Fiji to learn English and also because of its natural beauty and rich captivating culture.

We were able to catch a glimpse of the warm Fijian hospitality through our interview with the friendly Ambassador. We left the interview with hopes of visiting this Paradise one day.

- 1 Handmade Soap - Made from 100% coconut oil.
- 2 Fiji Water  
From rain falling on the tropical island, filters down through layer after layer of ancient volcanic rock. FIJI Water and Island Chill Water are also sold in Japan.
- 3 Noni Juice  
Noni juice is derived from the fruit of the Morinda citrifolia tree, grown in Fiji with full of vitamins and mineral, known as a health drink.
- 4 Brought in by Fijians of Indian descent, Fiji Curry Sauce is exported to Japan as well.
- 5 Masi (Fijian word for tapa or bark cloth)  
Masi is a cloth made from the bark of the Mulberry Tree (Broussentia papyrifera). It is made from pounding the lewena or inner bark of the mulberry tree. The bark of the paper mulberry tree was peeled, and the inner bark stripped away. This was steeped in water, cleaned with shell scrapers, and then rolled up for storage. Before being beaten into cloth, the rolls were soaked in water, after which they were beaten using a series of ike, or mallets. The grooved surfaces of the mallets were first used to spread the bark and the plain faces used to smooth and finish it. Masi is worn on formal occasions such as weddings and also are used for walls decoration. There was a beautiful piece of masi art hanging on the wall at the Embassy.
- 6 Made from coconut palm trees, each piece is handcrafted by artisans using traditional techniques; Pacific Green products are also displayed/used in the embassy.



# Azabu Cool

We ask foreign nationals who either reside, work, or study in the Azabu region about their impression of Japan. This time we interviewed Ms. Andrea Johnson (from U.S.A.), who was studying art as a student at Temple University (Minami-azabu 2-chome) until August.



Her favorite kanji without hesitation is "ryuu" (dragon). The reason is because it gives a strong impression, and because she was born in the year of the dragon...



A poster in black and white which she made for her graduation exhibition.

## Why did you decide to come to Japan?

I participated in a Buddhist community activity in my hometown of Stockton, California, and became interested in the Traditional Japanese drums and that's how I started to become interested in Japan.

I first came to Japan in 2005, which was on a tour, and I visited Kyoto and Tokyo at that time.

## What kind of activities are you involved in?

I came back to Japan again in August 2009 and studied art (photography and writing) at Temple University (Minami-azabu) until August of this year. As a part of my graduation thesis, I held a photo exhibit in Harajuku from the end of March until early April, this year, which was a very good experience. My favorite Japanese artists are Hiroshi Sugimoto, a photographer known for his Seascapes photographs of the sea and its horizon, and authors, Arimasa Osawa, known for his novels like Shinjuku Shark, and Koji Suzuki, who wrote Ring. I, myself, continue to take photographs and am writing a novel which takes place in Minato City.

## Did your impression of Japan change before and after you came?

The impression I had before coming was "an interesting culture," "quiet," "humble" and "polite," which basically hasn't changed. What surprised me in a good way after living here was that people keep a certain distance in their daily lives. It could also mean that they turn a blind eye at times.



There have been several interesting occurrences on my commute by train from where I lived in Saitama to Minami-azabu where my university was. In a train where people are crushed together like a can of sardines, as a result of mutual concessions, there will be an empty seat. On the other hand, a salary man can be drunk on the train and have nothing stolen, which is a sign of how safe this country is. For example, at cafés, people put their things on the table to keep their seat. When I first arrived, I thought "no way!" but now I've become pretty much used to everything. (laughs)

## What is your favorite dish and product in Japan?

I was busy with my assignments during my university days so I didn't have much time to cook, but I like all general Japanese dishes such as tonkatsu, yakitori, yakiniku, gyoza, and yakisoba. When I go back to the U.S.A., I buy my family souvenirs such as Japanese fans and tatami slippers.

I enjoy everyday so I've never felt bored. That's why I haven't yet thought of what I would buy from Japan to take home when I go back to my country. I'd like to continue to live here in Japan.

(Interview and written by: Kumiko Ohmura, Ayako Fukumoto)

Note: we sincerely apologize for our error in the previous edition of "Azabu Cool." The correct information is that Mr. Pascal first came to Japan when he was 18 years old and that he could eat everything except fermented soybeans and *umeboshi*.

地域社会  
の  
ゆくえ

8

"The Local Community"

## Making Use of the Minato Fureai Hall Establishing seminars to assist in social participation



There is no sign by the entrance so be careful. The office is on B1.

The Minato Fureai Hall is located inside an office building located between Shino-hashii Bridge and Korin-ji Temple, along Meiji-dori Street (St.). The facility was relocated in May due to the barrier-free construction taking place at Hiroo Station. It is operated by the Minato City Senior Human Resource Center (hereafter "Silver"), a public interest incorporated association.

Their activities are divided into two main groups. One is the Fureai culture seminars. The other is the computer classrooms equipped with the latest computers. The main lecturers for both activities are the Silver registered members.

Most of the Silver registered members are residents who are over 60 years old. As teachers, they hope to again utilize the skills, knowledge and experience they accumulated over the years. Using their abilities, they take part in social participation and have something to live for. Although the relationship may be between a lecturer and student, the joy of learning is mutual, which is a great merit.

A diverse range of curriculums are available at the Fureai culture seminars, and there are no age restrictions. Of course, those from out of Minato City are also welcome to join. Some of the popular children-oriented classes are the ballet

and introductory "Go" classes. Flower arrangement for adults, calligraphy and hula dance classes are updated every 3 months.

On the other hand, the computer classroom operated by eight lecturers is open seven days a week. Attending the experience-based class and sitting in on classes is free anytime. The "Skill-set" seminar covers Word, Excel, and how to make your own website. Review seminars, and individual and private lessons are also available. The motto is to teach slowly, kindly and politely. A space has been created where even beginner computer users can learn with peace of mind.

With the decreasing birthrate and aging of the population, the computer class is aimed at securing job opportunities. In other words, the idea is for senior citizens to learn the basics of the computer so more opportunities become available for them to participate in society.

In October, a new seminar will start teaching how to use smartphones. With the changing of the times, we are dedicated to a positive approach to business development. Promotion of useful classes to provide opportunities for people to participate in society is one of Silver's important missions.

As a local space where you can learn at your own pace, the demand will only surely increase for the Minato Fureai Hall.

### Minato Fureai Hall

Oak Minami-azabu Building B1  
3-19-23 Minami-azabu, Minato City  
Tel: 03-5475-1305



Flower arrangement class



Computer class



Calligraphy



One often comes across signboards with the words “Minato City Board of Education Designated Cultural Property” written on them when taking a walk in the city. In the open lot which used to be the dormitory of a major corporation on the south side of the Hinoki-cho Park is a sign which reads, “Site of Naoya Shiga’s Residence,” and there is a monument for Kafu Nagai displaying the “Site of Penki Hall” inside Izumi Garden. Many of Japan’s great writers from the Meiji, Taisho and Showa period lived in this area, as shown by the “Site of Ryudoken” (French restaurant)\*1 about which it is said, “Naturalism was born from the ashtrays at Ryudoken” which can be found in the corner of Seijoki-dori Street as you walk from Gaien Higashi-dori Street. In addition, midway up the Itachizaka Slope at Azabu Mamiana-cho, is the “Site of Toson Shimazaki’s Residence”.\*2 This month, we decided to look back at Azabu 100 years ago from the novels and essays of these writers.

\*1: The building has been rebuilt and the monument has been removed. \*2: Currently under construction and has been removed.

## Landscapes of Azabu Left by Great Writers

Naoya Shiga was born in 1883 in Ishinomaki which was where his father had been transferred to. The family returned to Tokyo a decade later and he lived at Mikawadai-machi, Azabu (now Roppongi 4-chome) with his father and grandfather from the age of 14 to 28, in a large house of about 990 square meters of floor space on an approximately 5,600 square meter piece of land. The young Naoya wrote his novels *One Morning*, *To Abashiri*, *Bicycle* and *The Razor* in this house.



Signboard for the site of Naoya Shiga's Residence



Site of Naoya Shiga's Residence, 2006 (in front of Tokyo Midtown)

Supplement: *Utsusareta Minato-ku 3 (Azabu Region Version) -Azabu, Roppongi, Others-* Issued by the Minato City Board of Edu, 2007

The main character of *The Razor* is Yoshisaburo who lived in Roppongi and owns a barbershop. This man, who was known for his skill using a razor is asked by a big mansion in Ryudo-cho to go sharpen knives. This part of the story also mentions a competitor, Yoshikawa, who runs his business in Kasumi-cho. Although a novel, the actual names of the areas he mentions and places like the barbershop sound very familiar for those of us who live in this area. The first Dean of Gakushuin University and a Privy Council member, Keisuke Otori lived next door to the Shiga household. The third son of this family met a premature death similar to a scene which appears in Naoya's novel, *The Razor*, when a character takes a knife to his throat. Although there may have been a difference between one being suicide and the other murder, Naoya was thinking about a scene of putting the knife against the throat at the same time this third son was meeting his death. Although it's a little sickening, Naoya has been said to have a strange talent, as shown in other episodes.

A businessman, playwright and novelist, Takitaro Minakami, which was the pen name of Shozo Abe, lived from the Meiji to the Showa period. His father, Taizo Abe, was the founder of Meiji Life Insurance Company, and was at one time also the Azabu District Council Vice President. Shozo was born in 1886 at Iikura 3-chome (currently Azabu-dai 2-chome) in a big mansion with a sprawling garden filled with trees. He lived there until he was 4 years old. While attending Keio University, he was inspired by Kafu Nagai's *American Stories* and after his graduation, started writing short stories. In 1911, he wrote his autobiographical novel, *Child from Yamanote* which was published in the literary magazine, *Mita Bungaku*. The story is about a boy who lives in a big mansion at the top of a hill and about his bittersweet memories of his friendship with children from the lower class district who live at the bottom of the hill which he was prohibited from playing with. He writes about his summer days in what is now Higashi-azabu.

One day, the boy decides to descend the hill, and after making friends with the town children, he makes Kumano Shrine and the area around Yanagi-ya, the tobacco store across the street, his playground. He mentions that water carts would come down the road several times a day during the hot summer and spray water under the eaves of the shops. He also talks about the goldfish merchants and swallow's nest under the roof of the liquor store which is a scene that still existed in the Meiji period after the Edo period. The boy talks about the Kumano



Azabu Morimoto-cho Sketch by Tsunetomo Morita (1927) (Dai Tokyo Hanjyo-ki) Scenery of Minato City. Minato City Library edition (1972)

Map of Kumano Shrine at Azabu Iikura (Shinsen Tokyo Meisho Zukai. 1902) Scenery of Minato City Chu. Minato City Library edition (1974)

Shrine's summer festival, how beautiful the lamps along the street in Iikura-cho were, and how the shop owners would close shop and put up gold screens, scarlet carpets, and flowers arranged according to the style of the Enshu school of ikebana to welcome their guests. This tradition of the summer festival cannot be seen anymore so it allows the reader to reminisce about the long gone days. He continues to talk about how the rickshaw man, an employee of his house who loved to watch plays, would take him to the Miyoshi Theater, a small theater nearby Kumano Shrine, when his father was off from work and keeping this a secret from the boy's mother. There is no record left of the Miyoshi Theater, but in those days in Azabu Morimoto-cho there was a small theater called Morimoto Theater. He talks about how the young girls of the town were head over heels in love with the star actor, giving the



Toson Shimazaki At Azabu Iikura (53 years old) *The Complete Works of Toson Vol. 9.* Issued by Chikuma Publishing Co.

readers a glimpse of the commoner culture of those days. In 1918, Toson Shimazaki, who had returned from France two years before, moved from Nishikubo Sakuragawa-machi (currently Toranomon 1-chome) to Iikura-katamachi (currently Azabu 3-chome). Since his wife died, he left his four children with his relatives while he travelled abroad but called them back and started writing novels as he brought his children up. He wrote *Before the Dawn* while living in this house. He wrote in an essay on the scenery of Nagasaka he saw on his way back from meeting the teacher of his daughter, who was going to the Azabu Elementary School, that the area had “quietness that I found accidently.” He talks about the scenery of Nagasaka, mentioning the brick and stone walls along the alley and the cleaners and tailors alongside Hokkeji Temple and the beautiful autumn sunset shining on the hill. One can imagine the how soothing it feels when the sun is shining on you as you walk up the hill.

Toson actually experienced the Great Kanto Earthquake of 1923, in Iikura. Iikurakata-machi 1-chome was destroyed by the fire that swept through, but where he lived was untouched. He writes about the devastation of Tokyo, the severe shock, and the extensive fire, in a letter he wrote to his son studying at an agricultural school in Nagano to tell him that the family was safe. He mentions that the day after the quake, an airplane was flying in the sky, the first that he had seen, that many power lines had fallen, that the post office had been destroyed, and about the survivors who had gathered around the train tracks, watching the airplane, as well as his thought that the plane would be able to communicate the devastation of the area to other places. He talks about the cruel summer the following year after the earthquake in *Iikura Dayori*. He writes his concern about the trees wilting away in the hot summer, that he hears from a neighbor that many office workers were collapsing from the heat and agrees to the news about the increase of flies and mosquitoes after an earthquake and writes, “It was a summer with many sleepless nights in Iikura.”

It is interesting to imagine what kind of town Azabu was from the compositions left by these great writers.

References: *Chikuma Nihon Bungaku Complete Works 43 Shiga Naoya* by Shiga Naoya. Chikuma Publishing Co.  
*Shiga Naoya* by Agawa Hiroyuki. Shinchosha Publishing.  
Supplement: *Minato City Modern Collection of Maps Azabu/Roppongi*. Minato City Board of Education  
*Utsusareta Minato-ku 3 (Azabu Region Version) -Azabu, Roppongi, Others-* Minato City Board of Education. Minato City Board of Education edition.  
*Hyakunen Bunko 61 (Omokage)*. Popura Sha.  
*Scenery of Minato City Chu*. Minato City Library Edition  
*Scenery of Minato City Ho*. Minato City Library Edition  
*Minato City During the Meiji Period Series*. Minato City Library Data Room/Minato City Library edition  
*The Complete Works of Toson Vol. 9* by Toson Shimazaki. Chikuma Publishing Co.  
Interview cooperation by: Mariko Yoshikawa

(Interview and written by: Kyoko Ideishi)  
The original article is written in Japanese.

# 麻布の軌跡

“The Phenomena of Azabu”

Title background map  
Issued by the Minato Local History Museum  
Created from Supplement: *Minato City Modern Collection of Maps Azabu/Roppongi* (2010)





# To the foreign nationals residing in Azabu, wouldn't you want to learn more about Azabu by participating in local community volunteer activities?

This will be a great opportunity for you to contribute to the development of the town as well as interact with the people of the community and learn more about the town of Azabu.

English interpreters will be there to help you while you participate in the activities.



**Eligibility**

Foreign nationals residing, working or studying in Minato City who are 20 years old or older and are interested in volunteer activities.

**Time and Place:**

Cleanup: Friday in the latter part of February, 19:45 (Activity starts from 20:00)

**Meeting Place:**

Mikawadai Park (Roppongi 4-2-27)

\* The purpose of the activity and your work will be explained. The activity will be for about one hour from the start.

**Area:**

Vicinity of the Roppongi Crossing  
 \* You can participate in both cleanup and patrol or either one.  
 \* There will be no reward.  
 \* The activity will be cancelled if it starts raining and you will be contacted on that day.

**Application:**

The date will be determined later. Please contact us if you are interested.

**For Inquiries Contact:**




Collaboration Promotion Section of the Azabu Regional City Office  
 Tel. 03-5114-8812 Fax 03-3583-3782



## Announcement from Hoka-GO Club

The Azabu Regional City Office has dedicated space, the "Hoka-GO Club"(after school club), within four public elementary schools where children can safely play and for children whose parents work after school hours. Registration is required to use the facility. Please use the contact details below for inquiries.



		Hoka-GO Club Nanzan, Hommura, Kogai, Higashimachi	
		Registration for Hoka-GO Club	Registration for Hoka-GO Children's Club
Eligible Children	1st to 6th grade elementary school children enrolled and residing within the area of the elementary schools		For 1st to 3rd grade elementary school children among the children enrolled in the elementary schools and children residing within the area of the elementary schools whose parents are working and have no parental supervision at home after school hours. (Eligible for 1st to 6th grade for Hoka-GO Club at Nanzan Elementary School)
Enrollment limit	None		Yes (Hoka-GO Club Nanzan: None)
Days	Monday to Friday (Open during the long holiday season and substitute days due to school events)		Monday to Saturday (Open during the long holiday season and substitute days due to school events)
Open Hours	*Weekday school days (from after school to 17:00) *Weekdays when schools are on holiday (long holiday season) From 09:00 to 17:00 (please have children bring their own lunch)		*Weekday school days (from after school hour to 18:30) *Weekdays when schools are on holiday (long holiday season) From 08:30 to 18:30 (please have children bring their own lunch) *Saturday 08:30 to 17:00 (please have children bring their own lunch)
Snacks	None		Yes (Fee)
For Inquiries		Hoka-GO Club (Nanzan Elementary School) Hoka-GO Club (Hommura Elementary School) Hoka-GO Club (Kogai Elementary School) Hoka-GO Club (Higashimachi Elementary School)	Tel: 3470-9699 Tel: 3473-4781 Tel: 3404-3301 Tel: 3451-7728

## Regional Traffic Safety Activities

~Recognized for the long years of service and awarded the Police Commissioner Award~

Roppongi is known as one of Tokyo's most bustling entertainment and business areas.

We interviewed Mr. Shosaku Nirasawa, Chairman of the Ryudocho Council, who is active in trying to reduce the number of traffic accidents.

### Traffic Safety Activities

Mr. Nirasawa has been the Chairman of the Ryudocho Council for over 20 years, and has put in a lot of effort in traffic safety campaigns and in the promotion of these activities. He told us that in the past "we couldn't get many people to participate in the campaign" and "it was embarrassing because it was always the same faces."

### Awarded the Police Commissioner Award for his Distinguished Services in Traffic

A commendation ceremony took place on May 18, 2012, at the Metropolitan Police Department to award those who had endeavored in traffic safety activities. Mr. Nirasawa was awarded the Police Commissioner Award. Mr. Nirasawa's comment upon receiving the award was, "This was an award I was able to receive because of the cooperation of the town council and people of the region." The police officers welcomed him when he returned to the Azabu Police Department

after the award ceremony, and his remarks at that time were, "I feel very privileged to have received such an award."

### To the People of the Region

"There is a higher risk of senior citizens and small children to be involved in traffic accidents, so please be careful when you go out at night and wear something which stands out so you can protect yourself. Please also be aware of rules, manners, and pedestrians when you are riding your bicycle or driving," he said.

His strong enthusiasm in continuing to endeavor in his activities aiming at security and safety could be felt.



## AZABU

● Location of the newsletter: Roppongi 1 chome, Roppongi, Hiroo, Azabu Juban subway station, Minato Library, Azabu Library Service Center, Apy Azabu, Azabu Regional City Office etc.  
● Usage of articles, illustrations and photographs in this newsletter is prohibited.

Chief Yasuhiko Ozaki	Tetsuro Kuraishi	Ayako Fukumoto
Sub Chief Tsuneko Ishiyama	Yoshie Osawa	Yoko Mitsuki
Staff Kazue Asakawa	Toshie Suzuki	Akira Mori
Yoshie Osawa	Yukiko Takayanagi	Ryozo Yamashita
Kumiko Omura	Aki Tanaka	Misa Suzuki
Keiko Orito	Kyoko Ideishi	Kyosuke Ebara
Chie Kato	Daichi Suzuki	
Junior Staff Akane Ishiyama	Akimitsu Fukuda	
Hibiki Omura		

### Editor's Note

My daughter, who had participated as a junior editor, is now a senior in high school. She was a junior high school student when she interviewed the curator of Sen-oku Hakuko Kan Museum (Vol.6). Now she is aiming to become a curator - I don't know what it was, but something must have sparked inspiration in her heart. As a mother, I hope that this regional information paper provides this kind of opportunity to the children of the region. (Tsuneko Ishiyama)

The original article is written in Japanese.

### "Minato Call" information service.

Minato call is a new city information service, available in English every day from 7 a.m.-11 p.m.

\*English speakers are also available

Minato Call :

Tel: 03-5472-3710 Fax: 03-5777-8752

E-mail: info@minato.call-center.jp

80 yen stamp is required

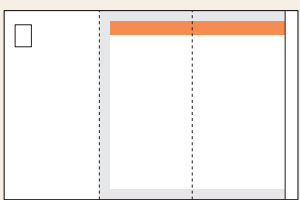
106-8515

Regional Policy Subsection  
Collaboration Promotion Section  
Azabu Regional City Office  
Roppongi 5-16-45  
Minato-ku, Tokyo (106-8515)

### Instructions on How to Fold

Please cut the paper at the bold line on the top and bottom

Please paste the opposite of the front of the envelope with an address on it



Paste the center area together

The address is the front, the questionnaire will come in the middle and fold according to the instructions and paste.

## Azabu Regional Information Paper "The Azabu" Questionnaire

Please send your comments and opinion

### Q1 What is your gender and how old are you?

- Male  Female
- 0-10 yrs. old  Over 20 yrs. old  Over 30 yrs. old
- Over 40 yrs. old  Over 50 yrs. old  Over 60 yrs. old
- Over 70 yrs. old

### Q2 Did you know that those in the region who applied to participate in "The Azabu" were doing interviews and writing articles?

- Yes  No

### Q3 How did you get "The Azabu"?

(Multiple answers allowed)

- Sent to my home  At the Azabu Regional City Office
- At the library  Inside the station  Others

### Q4 Was there any article in Volume 21 which interested you? (Multiple answers allowed)

- Cover Page (P1)  AZABU A Human Story (P2)
- Azabu Walking (P3)  Kid's Hello Work (P3)
- From the "World" of Azabu (P4)  AzabuCool (P5)
- The Future of the Regional Community (P5)
- The Phenomenon of Azabu (P6)
- Others [ ]

### Q5 How would you evaluate "The Azabu"?

- Very Good  Good
- Not So Good  Bad

### Q6 Let us know your comments, opinions, or any other subjects you would like for us to take up.

(Ex: Please write an article on the Azabu region's xxxx activity.)

Please Write in Japanese.

**Bandannas with former town names on them will be given away as gifts to everyone who answers the questionnaire**



We would like to use your comments as a reference to write more interesting articles.

Please Write in Japanese.

Name \_\_\_\_\_

Address \_\_\_\_\_

Thank you very much for your cooperation.