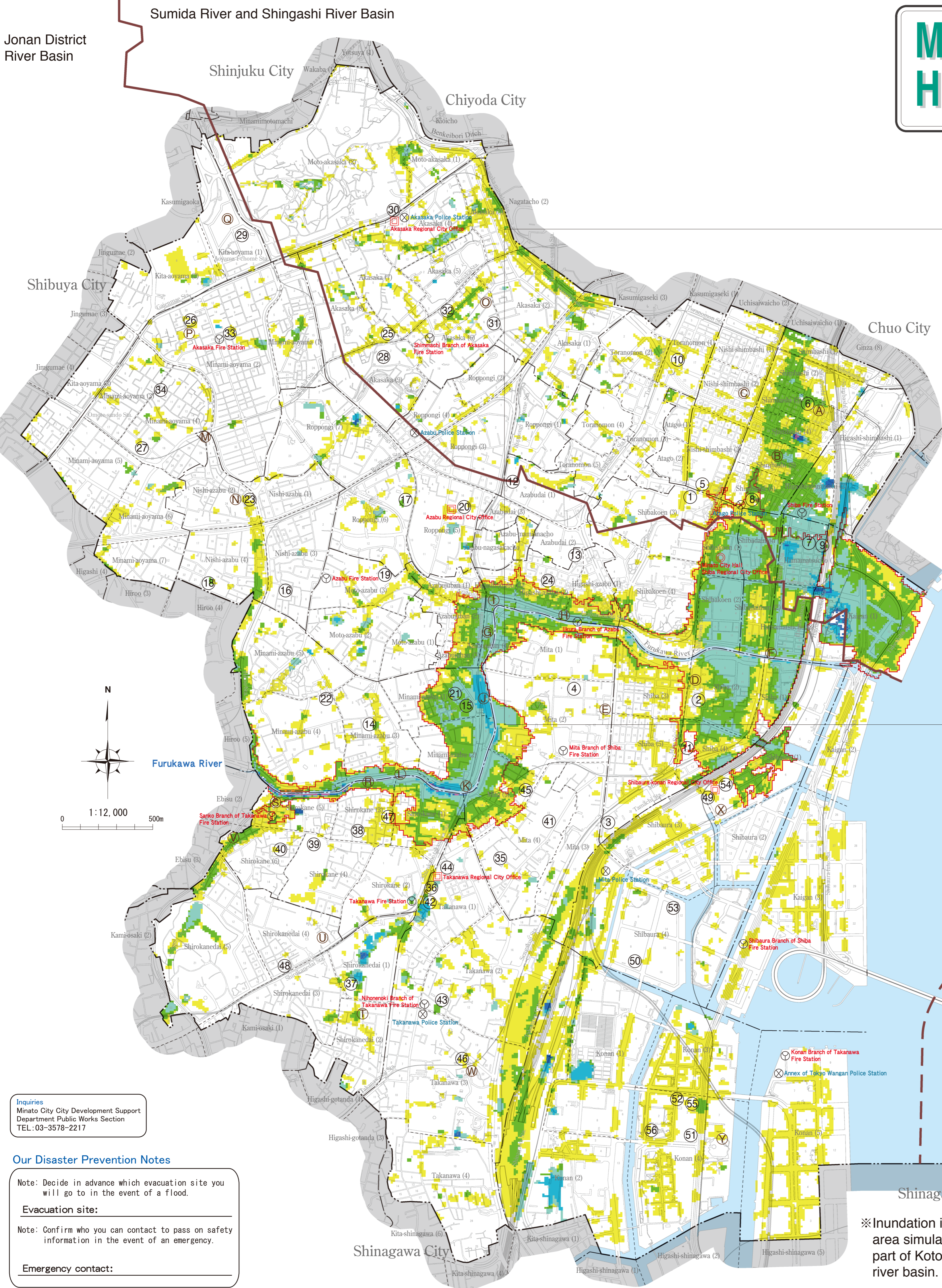


Minato City Flood Hazard Map

April 2024



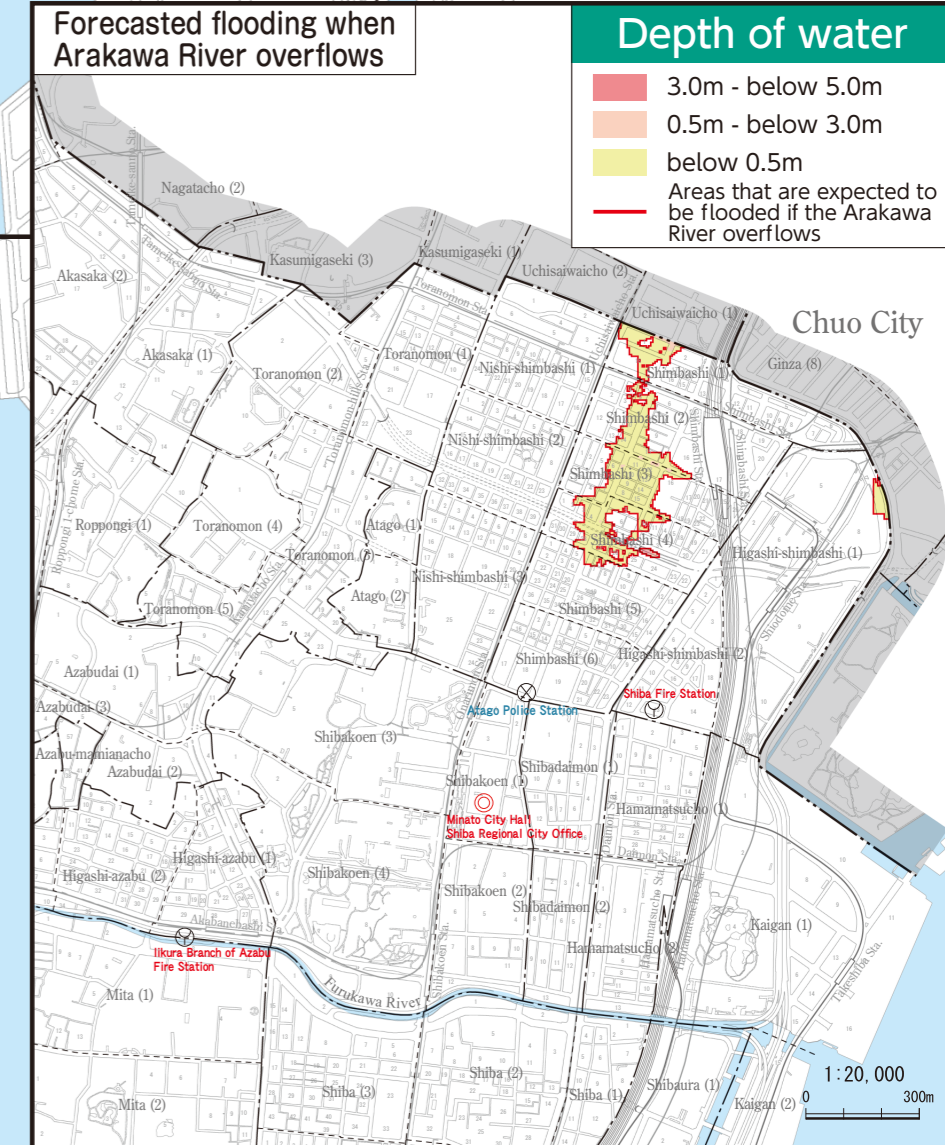
Legend

Depth of water

- More than 5.0 m
- 3.0 m - below 5.0 m
- 2.0 m - below 3.0 m
- 1.0 m - below 2.0 m
- 0.5 m - below 1.0 m
- 0.1 m - below 0.5 m

Disaster preparedness facilities

- ① ~ ⑤⑧ Evacuation Shelters
- Ⓐ ~ Ⓢ Sandbag storage
- Forecasted flooding when Furukawa River overflows (Assumed zone of inundation by river water)
- City Hall
- Regional City Office
- Police Station
- Fire Station
- City border
- Machi (Town) border
- Chome (Block) border
- Drainage divide



This area map has been created on the basis of the Arakawa River System Arakawa River Flood Forecast Map specified and published on May 30, 2016 by the Ministry of Land, Infrastructure, Transport and Tourism. The area map is based on the assumption that the heaviest rainfall within expectations occurs (total rainfall of 632 mm in 72 hours in Arakawa River Basin). On this map, shows the assumed zone of Inundation by river water.

Inquiries
Minato City City Development Support
Department Public Works Section
TEL: 03-3578-2217

Our Disaster Prevention Notes

Note: Decide in advance which evacuation site you will go to in the event of a flood.

Evacuation site:

Note: Confirm who you can contact to pass on safety information in the event of an emergency.

Emergency contact:

About Minato City Flood Hazard Map

This map shows a forecast of the areas that will be flooded in the event of heavy rain that greatly exceeds the drainage capacity of the sewerage system and rivers. The map shows information such as the areas that are expected to be flooded, and the flood depths and evacuation centers for those areas. We ask city residents to be aware of the possibility of flooding, and use this map in their everyday preparedness for flooding and evacuation. Check the flood situation for the area around your home.

Types of Inundation

● Inundation by River Water

Inundation by river water is a phenomenon where the river water overflows and causes inundation in the city. On this map, the red line enclosing Furukawa River shows the inundation-assumed zones in case of the overflow of Furukawa River. (Assumed zone of inundation by river water) The inundation height within the red line that encloses Furukawa River is the assumed zone that combines both the inundation by river water and the inland inundation.

● Inland Inundation

Inland inundation is a phenomenon where localized heavy rain falls beyond the capacity of sewerage and drainage, which causes the overflow of rain water and the inundation of the city. On this map, the zone outside the red line enclosing Furukawa River shows the assumed zone of inland inundation.

Note: Be aware that the areas where flooding is expected and the extent of the flooding may vary depending on various factors (for example, how the rain falls, how the land is being used, and the management situation regarding rivers and sewerage).

Assumed Zone of Inundation

● Assumed Zone of Inundation

The assumed zones of inundation on this map show the scope and the height of the inundation when the heaviest possible rainfall (total rainfall: 690mm, maximum rainfall in 1 hour: 153mm) occurs in the respective basins. The inundation estimates are based on simulations by the Tokyo Metropolitan Government* and are reflected on the map.

*Referring to "Inundation Simulation Area Map of Jonan District River Basin" (December 2018) "Inundation Simulation Area Map of Sumida River and Shingashi River Basin" (March 2021), and "Inundation Simulation Area Map of Koto Inland River Basin" (March 2020).

● Approximate Inundation Height

The statuses of river and sewerage facility development are as below:

- [Jonan District River Basin] → Data as of FY2017
- [Sumida River and Shingashi River Basin] → Data as of FY2018
- [Koto Inland River Basin] → Data as of FY2018

Evacuation Shelters

Contact Minato City Office when evacuating to an evacuation center. (Minato City Office TEL: 03-3578-2111)

Area	No.	Facility Name	Address	Area	No.	Facility Name	Address
Shiba	1	Onarimon Gakuen Onarimon Elementary School	3-2-4 Shibakoen	Akasaka	30	Akasaka Civic Center	4-18-13 Akasaka
	2	Shiba Elementary School	2-21-3 Shiba		31	Sun Sun Akasaka (Akasaka Kids-to-Teens Hall)	6-6-14 Akasaka
	3	Fudanotsuji Square (Industrial Promotion Center)	5-36-4 Shiba		32	Akasaka Iki-iki Plaza	6-4-8 Akasaka
	4	Akabane Elementary School	2-6-2 Mita		33	Aoyama Iki-iki Plaza	2-16-5 Minami-aoyama
	5	Onarimon Gakuen Onarimon Junior High School	3-25-30 Nishi-shimbashi		34	Seinan Iki-iki Plaza	4-10-1 Minami-aoyama
	6	Lifelong Learning Center	3-16-3 Shimbaishi		35	Mita Elementary School	4-11-38 Mita
	7	Eco Plaza	1-13-1 Hamamatsusho		36	Takanawa Civic Center	1-16-25 Takanawa
	8	Welfare Plaza Sakuragawa	6-19-2 Shimbaishi		37	Shirokane Elementary School	1-4-26 Shirokanedai
	9	Shimizu Kids-to-Teens Hall Shimizu Iki-iki Plaza	1-6-7 Hamamatsusho		38	Former Sanko Elementary School	3-18-2 Shirokane
	10	Toranomon Iki-iki Plaza	1-21-10 Toranomon		39	Shirokanenooka Gakuen Shirokanenooka Elementary and Junior High School	4-1-12 Shirokane
Azabu	11	Mita Iki-iki Plaza	4-1-17 Shiba	Takanawa	40	Shinno Iki-iki Plaza	6-9-5 Shirokane
	12	Azabu Elementary School	1-5-15 Azabudai		41	Mita Junior High School	4-13-13 Mita
	13	Former Ikura Elementary School	2-1-1 Higashi-azabu		42	Takamatsu Junior High School	1-16-25 Takanawa
	14	Hommura Elementary School	3-9-33 Minami-azabu		43	Takanawadai Elementary School	2-8-24 Takanawa
	15	Higashimachi Elementary School	1-8-11 Minami-azabu		44	Takanawa Kids-to-Teens Hall	1-4-35 Takanawa
	16	Kogai Elementary School	3-11-16 Nishi-azabu		45	Toyooka Iki-iki Plaza	5-7-7 Mita
	17	Roppongi Junior High School	6-8-16 Roppongi		46	Takanawa Iki-iki Plaza	3-18-15 Takanawa
	18	Koryu Junior High School	4-14-8 Nishi-azabu		47	Shirokane Iki-iki Plaza	3-10-12 Shirokane
	19	Nanzan Elementary School	3-8-15 Motoazabu		48	Shirokanedai Iki-iki Plaza	4-8-5 Shirokanedai
	20	Azabu Civic Center	5-16-45 Azabudai		49	Shibahama Elementary School	1-16-31 Shibaura
Akasaka	21	Minami-azabu Iki-iki Plaza	1-5-28 Minami-azabu	Shibaura-Konan	50	Shibaura Elementary School	4-8-18 Shibaura
	22	Azabu Kids-to-Teens Plaza Ariu Iki-iki Plaza	4-6-7 Minami-azabu		51	Konan Elementary School	4-3-28 Konan
	23	Nishi-azabu Iki-iki Plaza	2-13-3 Nishi-azabu		52	Konan Junior High School	4-3-3 Konan
	24	Figura Iki-iki Plaza	2-16-11 Higashi-azabu		53	Shibaura-konan Civic Center	4-13-1 Shibaura
	25	Akasaka Gakuen Akasaka Elementary School	8-13-29 Akasaka		54	Minato Park Shibaura (Minato City Sports Center/Gender Equality Center)	1-16-1 Shibaura
	26	Aoyama Elementary School	2-21-2 Minami-aoyama		55	Konan Kids-to-Teens Hall	4-3-7 Konan
	27	Seinan Elementary School	4-21-15 Minami-aoyama		56	Konan Iki-iki Plaza	4-2-1 Konan
	28	Akasaka Gakuen Akasaka Junior High School	9-2-3 Akasaka		57	Odaba Gakuen Ryoji Elementary and Junior High School	1-1-5 Daiba
	29	Aoyama Junior High School	1-1-9 Kita-aoyama		58	Daiba Civic Center	1-5-1 Daiba

Note: This data is current as of April 2024. For the latest information, refer to Minato City Disaster Prevention Section.

Sandbags available

We provide free sandbags so that citizens can take independent measures to prevent flooding. Please take sandbags freely from the following locations if you need them.

Area	Sign	Location	Address
Shiba		Shiba Regional City Office TEL:03-3578-2032	
	A	Sakurada Park	3-16-15 Shimbashi
	B	Shiogama Park	5-19-7 Shimbashi
	C	Nan-o Park	3-10-13 Nishi-shimbashi
	D	Shibazono Children's Playground	2-7-12 Shiba
	E	Mita 2-chome Children's Playground	2-10-7 Mita
Azabu		Azabu Regional City Office TEL:03-5114-8803	
	G	Shir-hiroo Park (Koyamabashi)	4-5-1 Azabujuban
	H	Nakanohashi Children's Playground	1-30-1 Higashi-azabu
	I	Ichinohashi Park	3-9-1 Higashi-azabu
	J	Minami-azabu 1-chome Children's Playground	1-7-29 Minami-azabu
	K	Furukawabashi Children's Playground	2-15-11 Minami-azabu
Akasaka		Akasaka Regional City Office TEL:03-5413-7015	
	O	Hikawa Park	6-5-4 Akasaka
	P	Aoyama Park	2-21-12 Minami-aoyama
	Q	Behind Kita-aoyama 1-chome Material Storage	1-7-33 Kita-aoyama
		Takanawa Regional City Office TEL:03-5422-7941	
	R	Shirokane Park	3-1-16 Shirokane
Shibaura-Konan		Shibaura-konan Regional City Office TEL:03-6400-0032	
	S	Sanko Children's Playground	5-12-5 Shirokane
	T	Busshogenjial Parking Space	2-5 Shirokanedai
	U	Shirokanedai 4-chome Children's Playground	4-4-14 Shirokanedai
	V	Naito Onsenko Children's Playground	6-22-16 Shirokane
	W	Takanawa Park entrance	3-21-1 Takanawa
Daiba	X	Shibaura Park	1-16-25 Shibaura
	Y	Konan Ryokusai Park	4-7-47 Konan

Note: This data is current as of April 2024. The telephone number for the Community Development Section Public Works Subsection of each Regional City Office is listed as the contact for inquiries.